

Canterbury Close, Retford, DN22 7WG

£220,000 Freehold

- ****NO UPWARD CHAIN**** • Deceptively Spacious THREE DOUBLE BEDROOM Townhouse • Sizeable Master Bedroom Enjoying a Dressing Area & En Suite • Off Road Parking for One Vehicle & Handy Single Garage • Secure, Low Maintenance Rear Garden • Enjoying a Quiet Cul De Sac Location in Well-Regarded Ordsall • Nearby Playing Field, Everyday Conveniences, Recreational Facilities, Pubs, Restaurants, & Schools for All Age Groups



An exciting opportunity to acquire a deceptively spacious THREE DOUBLE BEDROOM townhouse, enjoying a quiet cul de sac location in the well-regarded Ordsall. Set over three storeys, the generous living accommodation briefly comprises an entrance hall, open plan kitchen lounge diner, ground floor WC, two double bedrooms, a well-appointed family bathroom, and a sizeable master bedroom spanning the entirety of the top floor, boasting a dressing area and master en suite. The frontage sees off road parking for one vehicle, and a handy single garage, whilst a secure, low maintenance garden resides to the rear. Resting on a corner plot on a popular development to the south-west of Retford, 19 Canterbury Close benefits from a playing field nearby, and enjoys close proximity to the market town's array of everyday conveniences, recreational facilities, pubs, restaurants, and schools for all age groups, whilst benefitting from great accessibility to the A1.

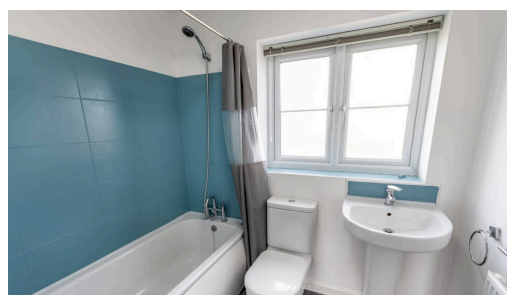


Council Tax band: B

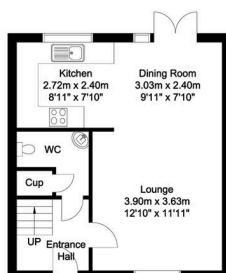
Tenure: Freehold

EPC Energy Efficiency Rating: B

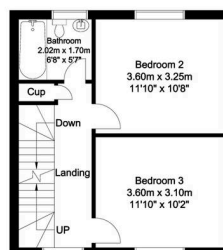
EPC Environmental Impact Rating: C



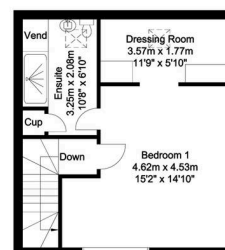
Ground Floor
37 sq m/398.26 sq ft
Approx.



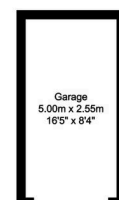
First Floor
37 sq m/398.26 sq ft
Approx.



Second Floor
37 sq m/398.26 sq ft
Approx.



Outbuilding
13 sq m/139.93 sq ft
Approx.



Whilst every attempt has been made to ensure the accuracy of the floor plan contained here, no responsibility is taken for incorrect measurements of doors, windows, appliances and rooms or any error, omission or misstatement. Exterior and interior walls are drawn to scale based on interior measurements. Any figure given is for initial guidance only and should not be relied on as a basis of valuation. The plans are for marketing purposes only and should only be used as such. No guarantee is given on the accuracy of the total square footage/ metrage if quoted on this plan. © Property Services @2020