



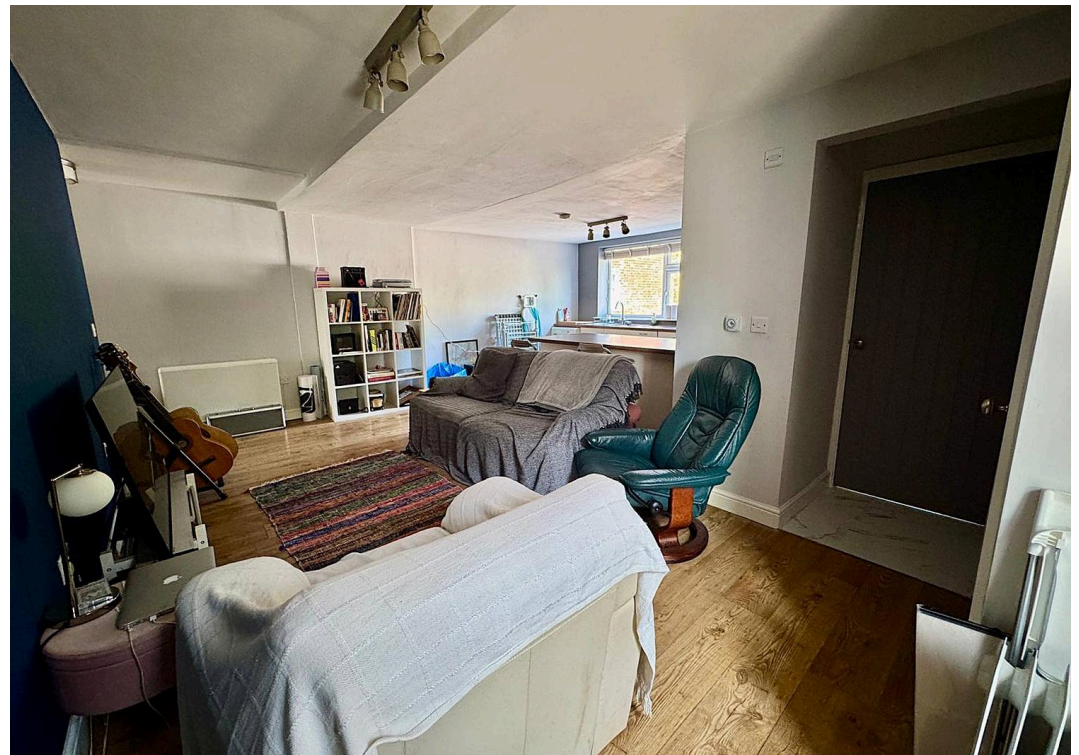
566 Parris Wood Road, East Didsbury

Manchester

£230,000

**GASCOIGNE  
HALMAN**

THE AREA'S LEADING ESTATE AGENCY



# 566 Parris Wood Road

East Didsbury, Manchester

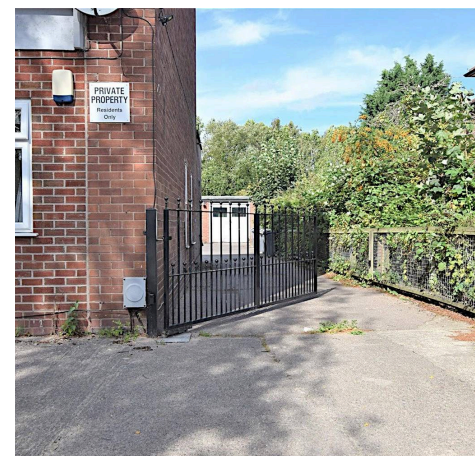
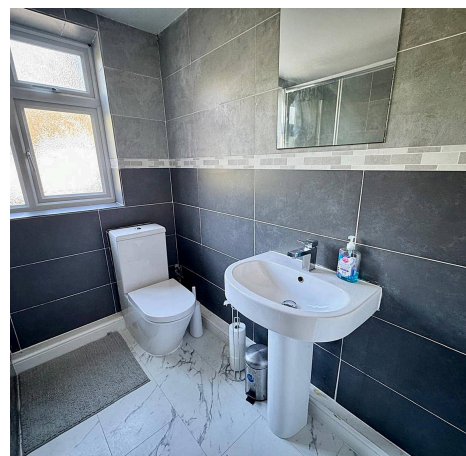
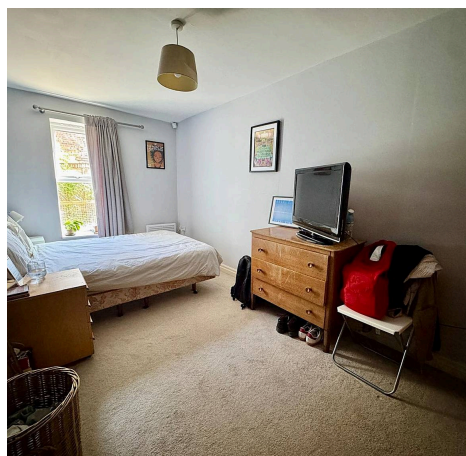
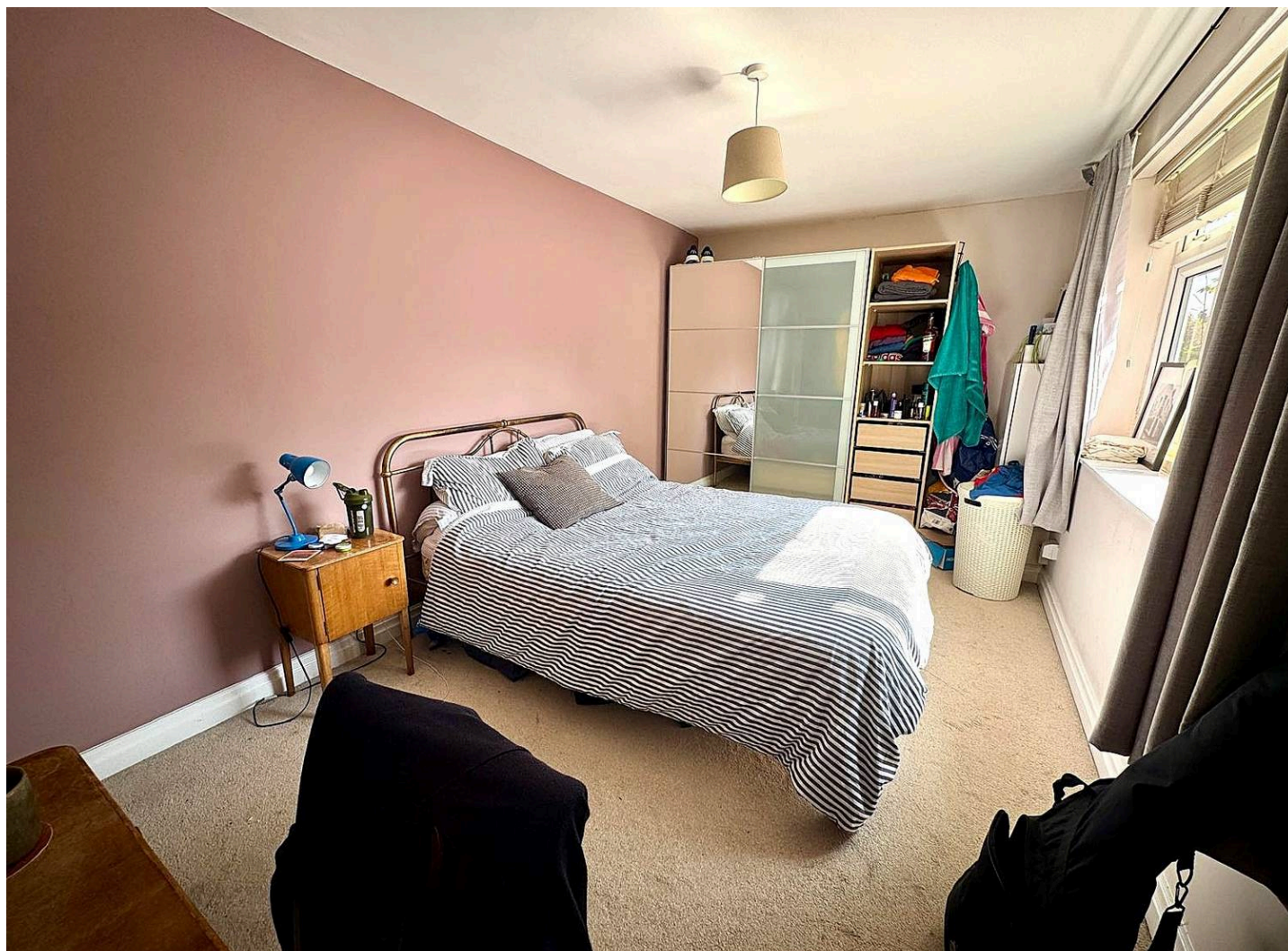
Council Tax band: A

Tenure: Leasehold

EPC Energy Efficiency Rating: C

EPC Environmental Impact Rating: D

- Offered to the market with No Vendor Chain
- Spacious and modern open plan Living/Dining Kitchen
- Two excellent and equally sized double bedrooms
- Private entrance and measuring an impressive 734 SQ FT
- Contemporary three piece shower room
- A superb and spacious ground floor apartment



## 566 Parrs Wood Road

East Didsbury, Manchester

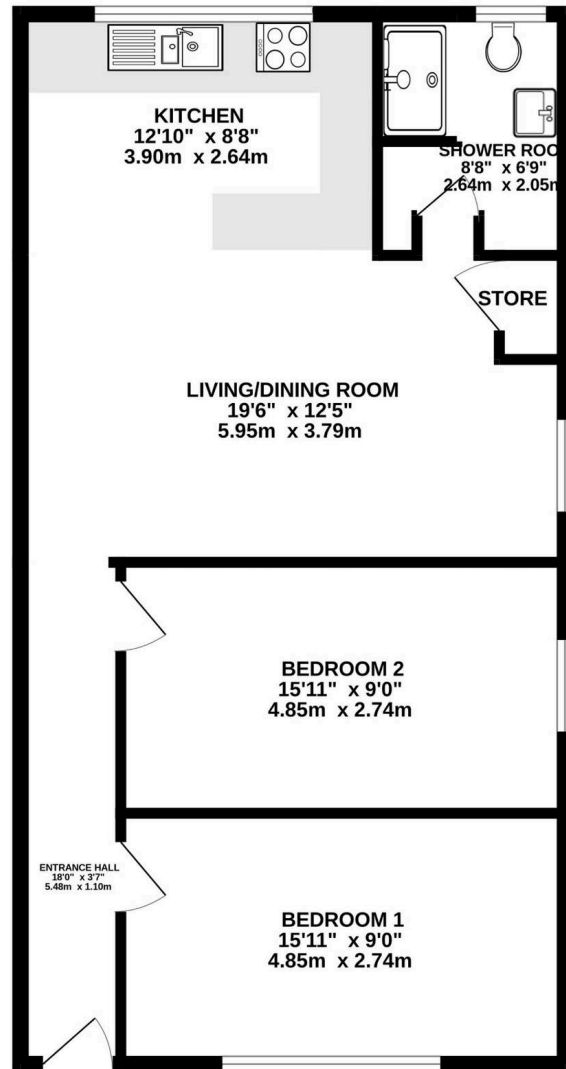
A stunning ground floor two double bedroom apartment with modern interior throughout. Located within walking distance to excellent transport links, Fletcher Moss Park and local amenities. Private entrance, communal entrance hall, two equally sized double bedrooms, spacious open plan fitted kitchen/living/dining area, and modern fitted three piece shower room. The property comes complete with gated parking to the rear and off road parking to the front of the property. Offered to the market with No Vendor Chain.

Internally the property comprises:- attractive private entrance, welcoming entrance hallway, two spacious light and airy double bedrooms, open-plan kitchen, living dining room which is generous in size and boasts tasteful décor and fittings. There is also a stunning modern shower room with double shower and attractive tiling. The property comes with its own private front door, resident parking, garage and is located in a popular residential area close to Fletcher Moss park, Didsbury train station and local Metrolink as well as only a short stroll to Didsbury Village high street.

There is easy access to Didsbury Village catering for everyday requirements where there is a wide range of restaurants, bars and shopping facilities. For the commuter Manchester City Centre lies approximately five miles away and is readily accessible via means of frequent bus services routed along either Kingsway (A34) or Wilmslow Road (A5145). Access to the National Motorway Network is also nearby and the property is within the catchment area of Parrswood High School.



GROUND FLOOR  
734 sq.ft. (68.2 sq.m.) approx.



TOTAL FLOOR AREA : 734 sq.ft. (68.2 sq.m.) approx.  
Measurements are approximate. Not to scale. Illustrative purposes only  
Made with Metropix ©2024



THE AREA'S LEADING ESTATE AGENCY