

RIGBY & MERCHANT



“A beautiful, bright second floor flat in this converted Victorian building conveniently situated in this sought-after location in North Kensington, W10.”



Ladbroke Grove, North Kensington - W10 6HE

Offers Over £650,000



Offers Over

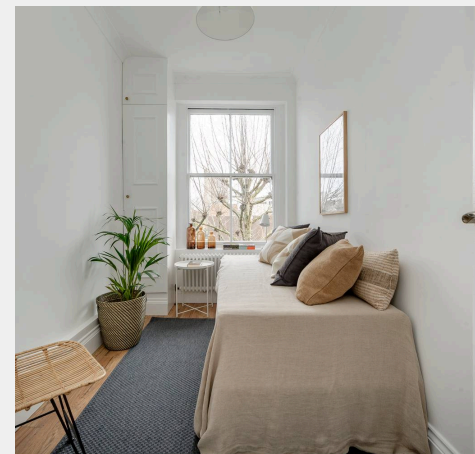
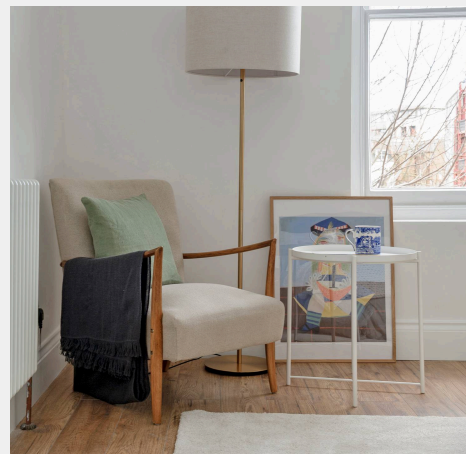
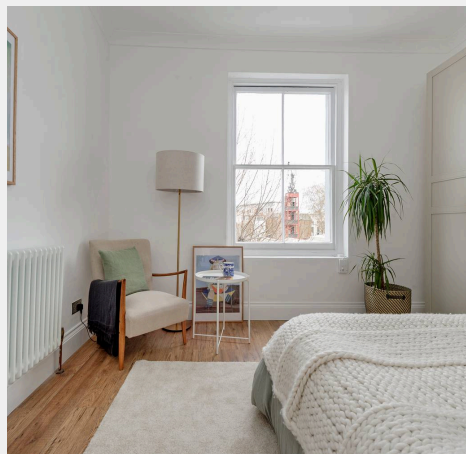
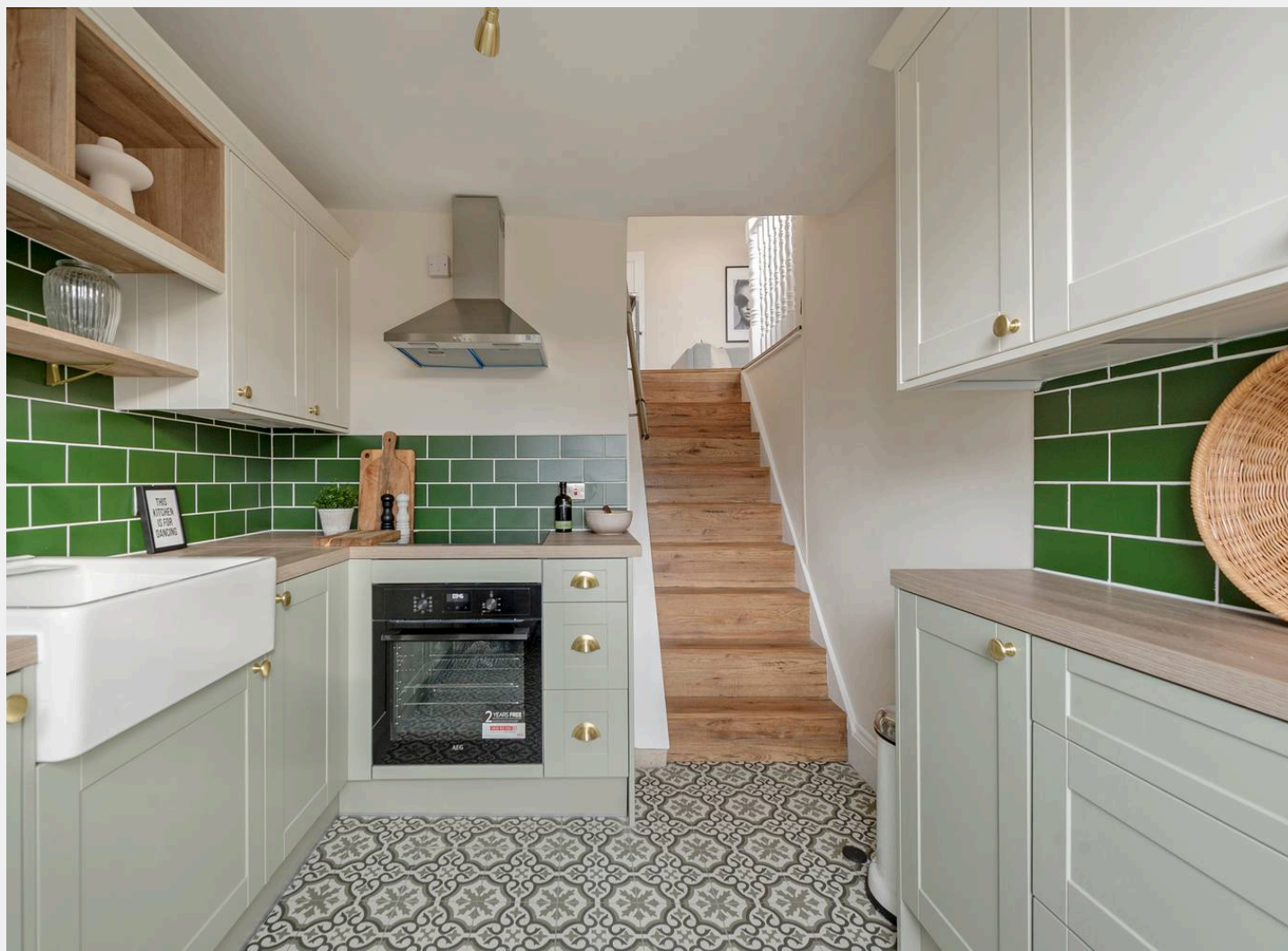
RIGBY &
MARCHANT

Stylishly updated, the accommodation comprises a charming reception room with westerly views and a new and beautifully appointed separate kitchen, set just below the reception space above. A pair of elegant bedrooms sit at the front of the house with commanding views over the street below and a modern shower room sits snugly in the centre of the home.

Ladbroke Grove is extremely well located within minutes of the amenities and transport links of Golborne Road and Portobello Road, and of course Ladbroke Grove itself.

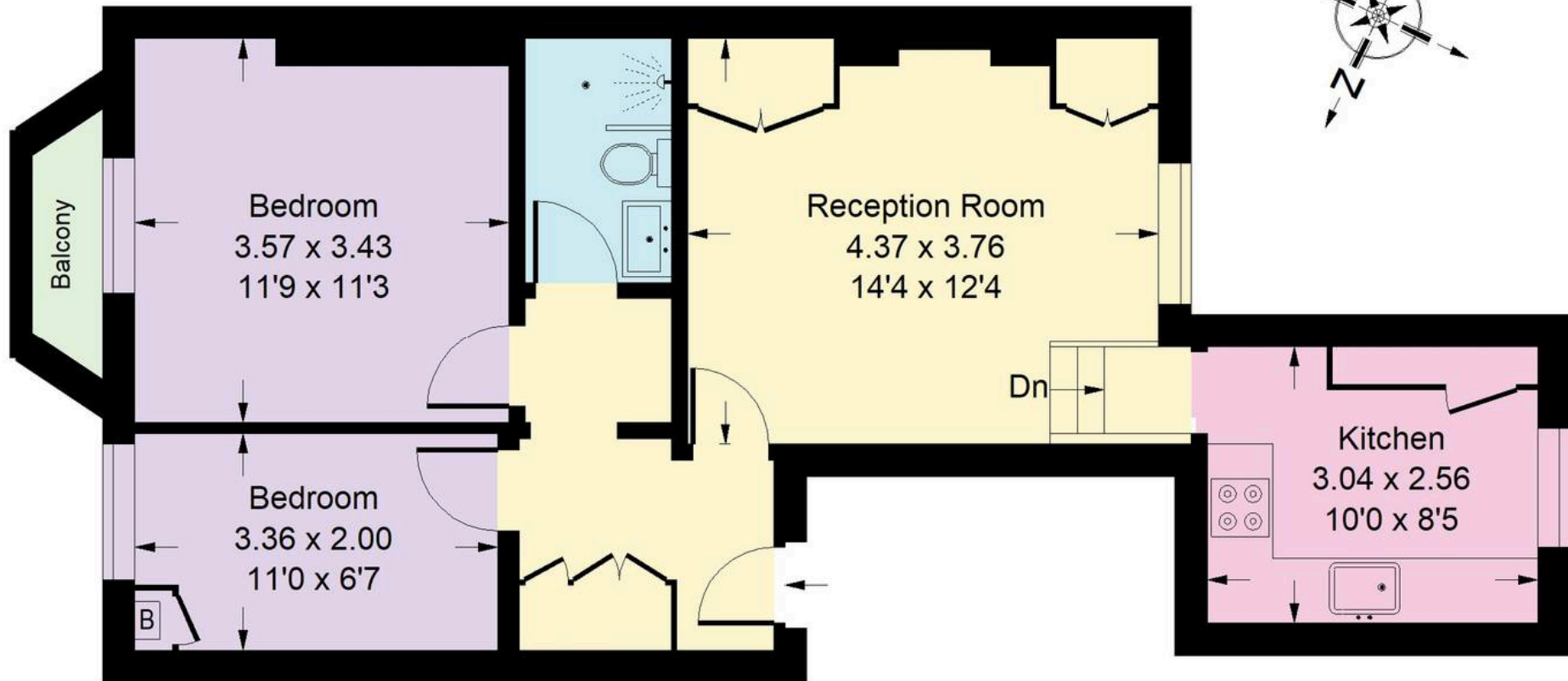
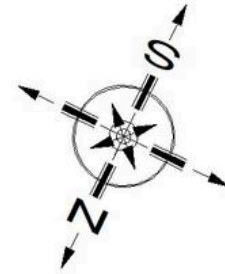
Council Tax band: D

Tenure: Share of Freehold



Ladbroke Grove, W10

Approx Gross Internal Area
54.8 sq m / 590 sq ft



Second Floor

Whilst every attempt has been made to ensure the accuracy of the floor plan, measurements are approximate and not to scale.
No guarantee is given on the total square footage of the property quoted on the plan. Figures given are for guidance.
Plan is for illustration purposes only, not to be used for valuations.



Rigby & Marchant

115 Westbourne Studios 242 Acklam Road, London - W10 5JJ

020 7221 7210

sales@rigbyandmarchant.co.uk

www.rigbyandmarchant.co.uk/

R&M