

8 Barker Walk, London

£500,000 Freehold



haboodle

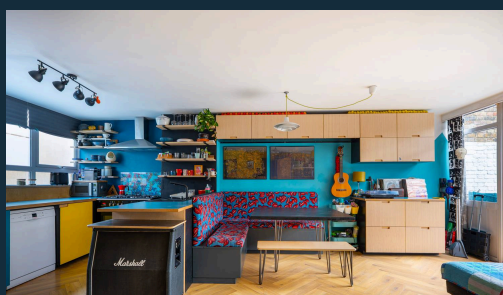
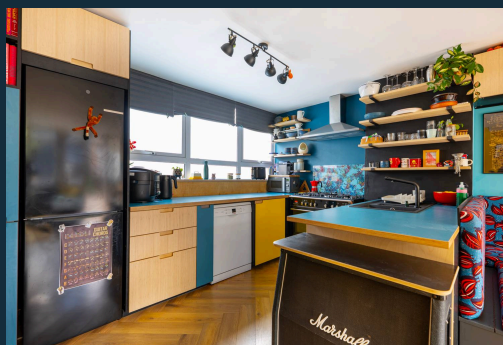
Set on Barker Walk, a quiet residential cul-de-sac in SW16, this attractive end-of-terrace home offers a well-balanced combination of natural light, practical living space and modern finishes. With two genuine double bedrooms, a south-facing garden and a thoughtfully arranged layout, the property is well-suited to both day-to-day living and entertaining.

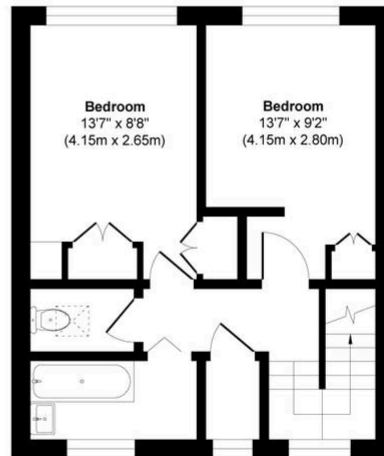
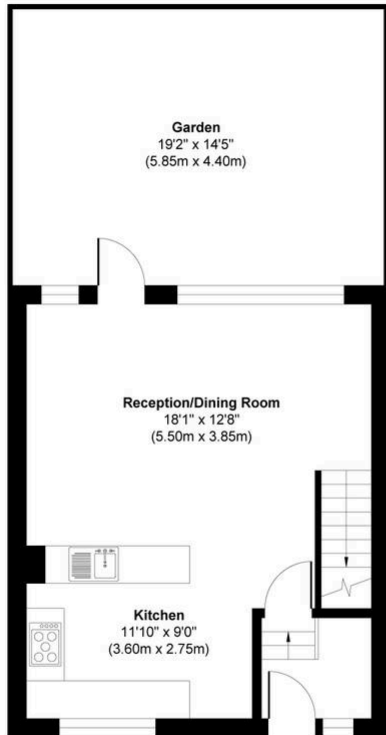
The house has been configured to maximise space and usability, with a bright open-plan kitchen and living area forming the heart of the home. This space has been enhanced with bespoke seating and built-in cupboards, creating a sociable and functional environment ideal for hosting as well as everyday use. Large windows and the end of terrace position allow for an excellent flow of natural light throughout.

Upstairs, the property comprises two well-proportioned double bedrooms, alongside a generous storage cupboard which is currently utilised as a home office, offering useful flexibility. A modern bathroom is complemented by a separate WC, enhancing the layout's practicality.



- › Two Double Bedroom End Of Terrace House
- › Quiet Residential Cul-De-Sac Location
- › South-Facing Private Garden
- › Open-Plan Kitchen / Reception Room
- › Bespoke Built-In Seating And Storage
- › Additional Storage Cupboard / Home Office Space
- › Moments from Henry Cavendish Primary School (Ofsted Outstanding)
- › Modern Bathroom With Separate WC
- › Close To Streatham Hill Railway





Ground Floor

First Floor

Barker Walk, London SW16

Approx. Gross Internal Area 764 sq. ft / 71.00 sq. meters

Whilst every attempt has been made to ensure the accuracy of the floorplan shown, all measurements, positioning, fixtures fittings and any other data shown are an approximate interpretation for illustrative purposes only and are not to scale. No responsibility is taken for any errors, omission, miss-statement or use of data show.

Plan produced by AR Net Media-www.arnetmedia.uk



haboodle