



## RIGBY & MARCHANT

*"A bright, spacious, six bedroom Victorian house on Dalgarno Gardens, North Kensington, W10. Directly opposite a park, with a southerly garden, period features, and potential to extend."*



Dalgarno Gardens, North Kensington - W10 6AD  
£2,500,000



RIGBY &  
MARCHANT

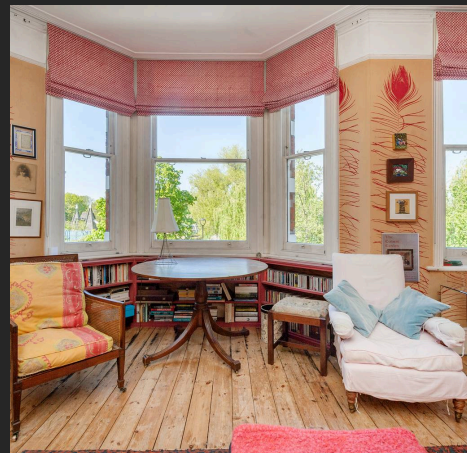
Opposite the wide open green of Little Wormwood Scrubs, this six bedroom Victorian house has been quietly held by the same family for thirty years. Set behind a handsome façade on Dalgarno Gardens, it offers generous proportions, a southerly garden and a rare sense of openness for this part of North Kensington.

Arranged over three principal floors, the house unfolds with a natural sense of space and light. Period character remains intact, while the layout offers clear potential to evolve over time, with scope to extend to the rear and into the attic, subject to the usual consents. To the front, uninterrupted views across the park bring a feeling of calm and privacy that is seldom found in London.

Dalgarno Gardens sits moments from the everyday energy of Portobello Road and Ladbrooke Grove, with the wider retail and dining offering of Westfield within easy reach. White City station, serving the Central line and Hammersmith and City line, is close by, and residents benefit from the advantages of Royal Borough of Kensington and Chelsea parking.

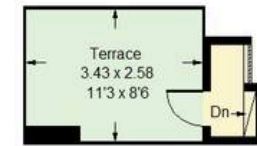
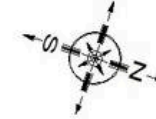
Council Tax band: G

Tenure: Freehold

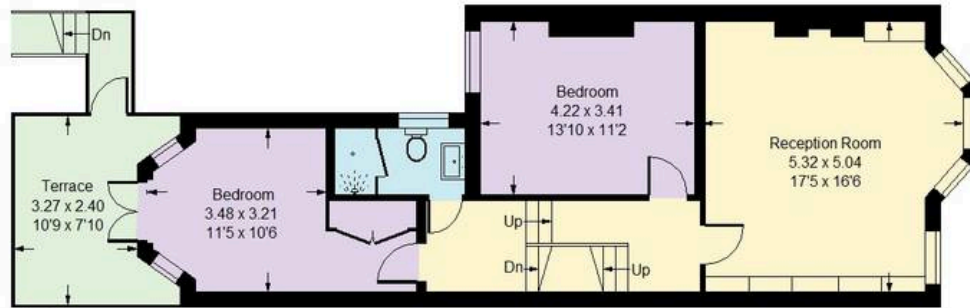


## Dalgarno Gardens, W10

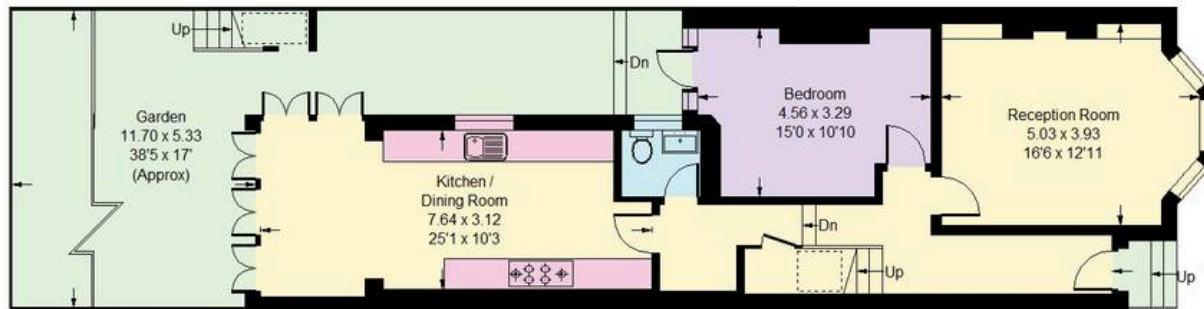
Approx. Gross Internal Area  
209.2 sq m / 2252 sq ft



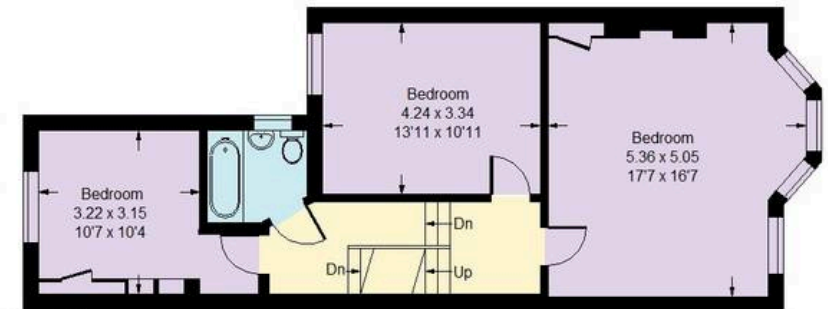
Third Floor



First Floor



Ground Floor



Second Floor

= Reduced headroom  
below 1.5 m / 5'

Whilst every attempt has been made to ensure the accuracy of the floor plan, measurements are approximate and not to scale.  
No guarantee is given on the total square footage of the property quoted on the plan. Figures given are for guidance.  
Plan is for illustration purposes only, not to be used for valuations.



## Rigby & Marchant

115 Westbourne Studios 242 Acklam Road, London - W10 5JJ

020 7221 7210

[sales@rigbyandmarchant.co.uk](mailto:sales@rigbyandmarchant.co.uk)

[www.rigbyandmarchant.co.uk/](http://www.rigbyandmarchant.co.uk/)

R&M