



St. John's Way - N19 3RR

**DAVID
ANDREW**

your
most
valuable
asset

A recently refurbished two-bedroom, two-bathroom split level apartment set on the top two levels of this Victorian house, situated moments from Archway Station N19.

The property features a thoughtfully separated reception room and fully fitted kitchen, allowing for both comfortable entertaining and relaxed daily living. Wood flooring runs throughout, enhancing the sense of warmth and continuity, while generous windows flood the interiors with natural light. Both bedrooms are well-proportioned, providing ample space for restful retreats or versatile home working arrangements.

Situated just a short walk from Upper Holloway and Archway stations, the property offers excellent transport links for swift commutes into the City and beyond. Local amenities, including shops, cafes, and restaurants, are within easy reach, ensuring a vibrant lifestyle on your doorstep. Offered unfurnished and available from the 10th of June.

Council Tax band: D

- Two Double Bedrooms Apartment
- Comprising 871 sq ft / 81 sq mt
- Separated Reception Room / Kitchen
- Fully Fitted Kitchen
- Wood Flooring Throughout
- Good Natural Light
- Arranged Over Split Level
- Walking Distance to Upper Holloway and Archway Stations
- Offered Unfurnished
- Available 10th of June



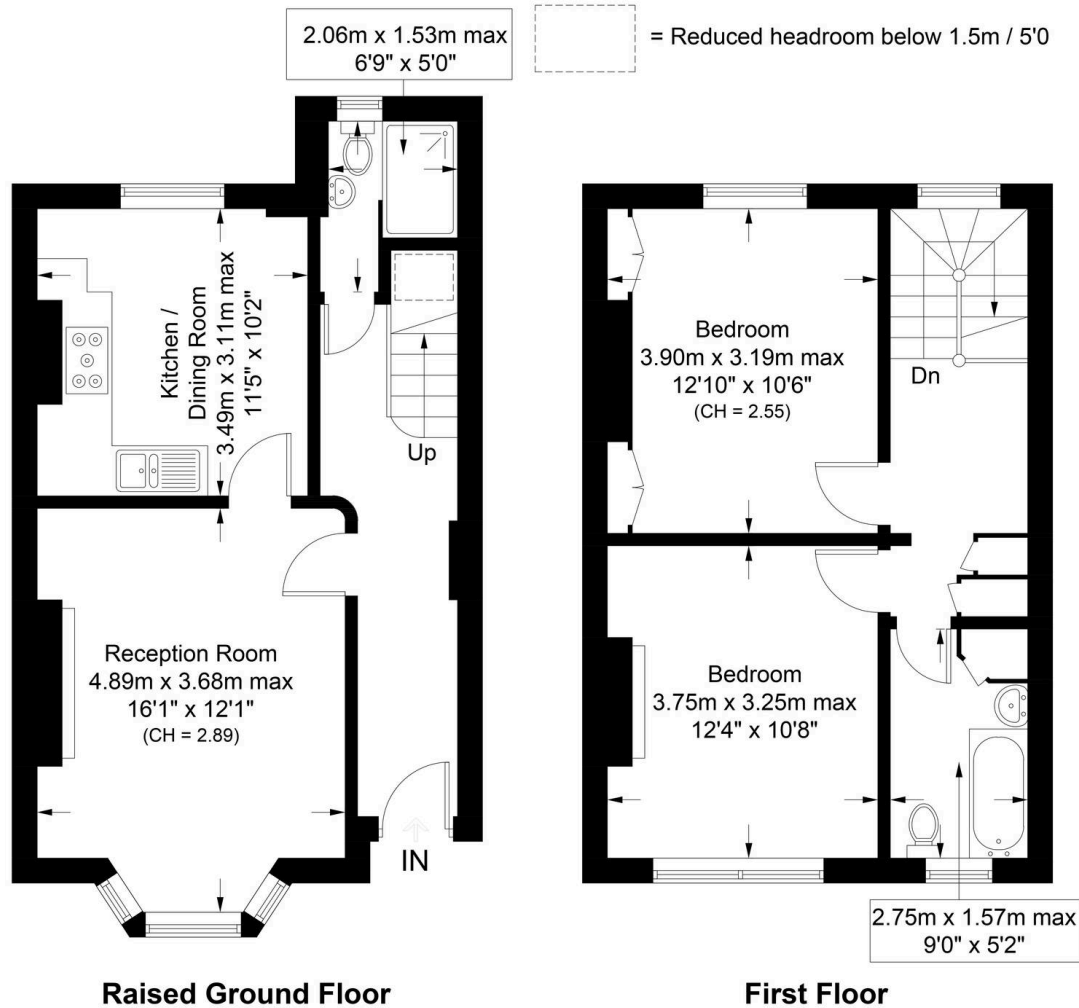




St. Johns Way, N19

Approximate Gross Internal Area = 866 sq ft / 80.4 sq m
 (Excluding Reduced Headroom)
 Reduced Headroom = 5 sq ft / 0.5 sq m
 Total = 871 sq ft / 80.9 sq m

DAVID ANDREW | your most valuable asset



Archway Office

671 Holloway Road
 London, N19 5SE

T (0)20 7619 3750

Highbury Office

90 Highbury Park
 London, N5 2XE

T (0)20 7354 9111

Finsbury Park Office

167 Stroud Green Road
 London, N4 3PZ

T (0)20 7281 2000

Property Management Office

235 Blackstock Road
 London, N5 2LL

T (0)20 7354 9222

scan to book a viewing



Certified Property Measurer

This plan is for layout guidance only. Not drawn to scale unless stated. Windows and door openings are approximate. Whilst every care is taken in the preparation of this plan, please check all dimensions, shapes and compass bearings before making any decisions reliant upon them. (ID1080325)



has been exercised in the of these particulars, out the property must not be as representations of fact. Prospective applicants and rely upon their own id those of professional s. David Andrew Estates bility for any error contained in these particulars.

