



*Symonds
Taylor*

25 Stratford Grove, Heaton

Newcastle Upon Tyne

Offers Over **£435,000**



25 Stratford Grove

Heaton, Newcastle Upon Tyne

This 3 storey period family home has a great location on a sought after street in the heart of Heaton that we know will be in strong demand and where an internal inspection will be essential.

Accommodation comprises:

Ground floor: Hallway, sitting room, open plan family room/dining kitchen, utility room, store/rear hallway.

First floor landing: Principal bedroom, bedroom 2, shower room.

Second floor: Landing/home office, bedroom 3, family bathroom.

Outside: Front garden, paved patio, rear courtyard.

Council Tax band: D

Tenure: Freehold

EPC Energy Efficiency Rating: D

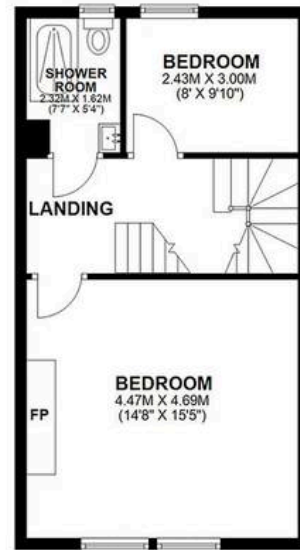
EPC Environmental Impact Rating:



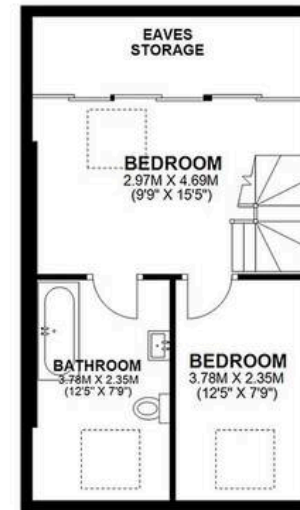
GROUND FLOOR



FIRST FLOOR



SECOND FLOOR



25 STRATFORD GROVE, HEATON, NE6 5AT

APPROXIMATE GROSS INTERNAL AREA 150 SQ M 1617 SQ FT - NOT TO SCALE - FOR ILLUSTRATIVE PURPOSES ONLY
All measurements and fixtures including doors and windows are approximate and should be independently verified.



*Symonds
Taylor*



Symonds Taylor

101 St. Georges Terrace, Jesmond - NE2 2DN

0191 338 9999 • hello@symondstaylor.co.uk • www.symondstaylor.co.uk

All descriptions, plans or references to condition are given in good faith only. Whilst every endeavour is made to ensure accuracy, please check with us on any points of especial importance to you.