



84 Fair Isle Drive, Nuneaton

Nuneaton

£250,000



**SHELDON  
BOSLEY  
KNIGHT**

LAND AND  
PROPERTY  
PROFESSIONALS

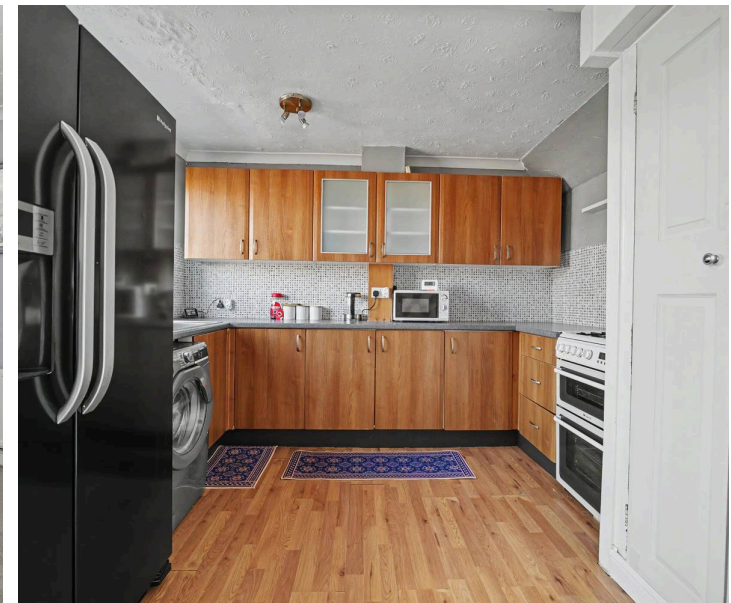
# 84 Fair Isle Drive

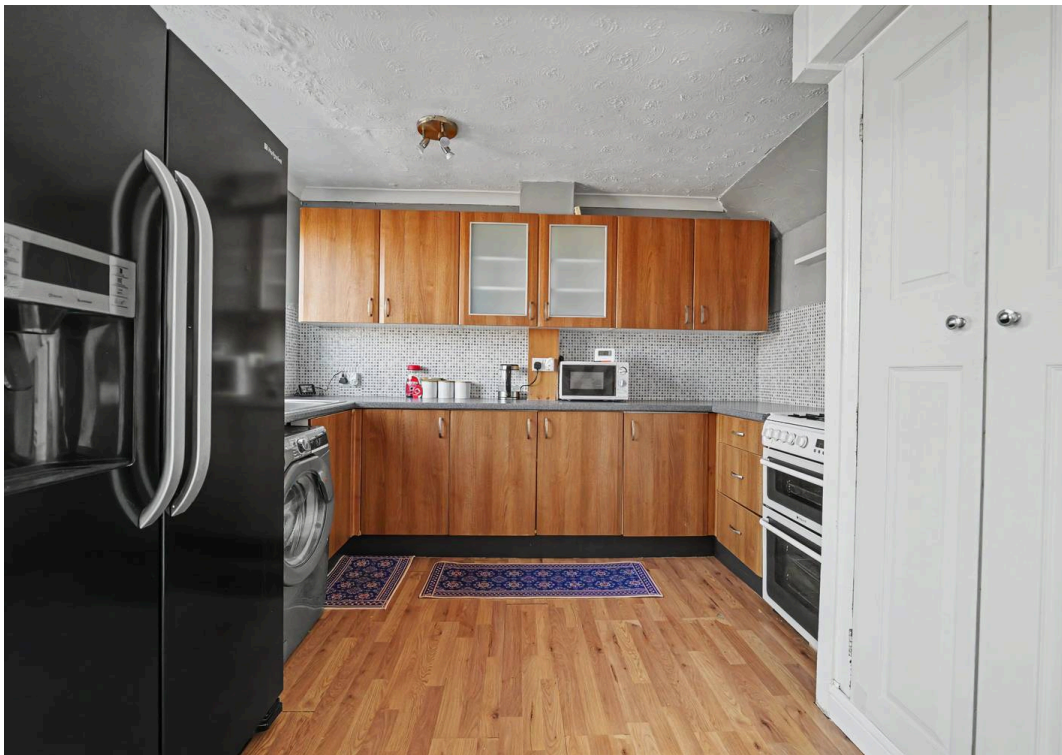
Nuneaton, Nuneaton

Council Tax band: B

Tenure: Leasehold

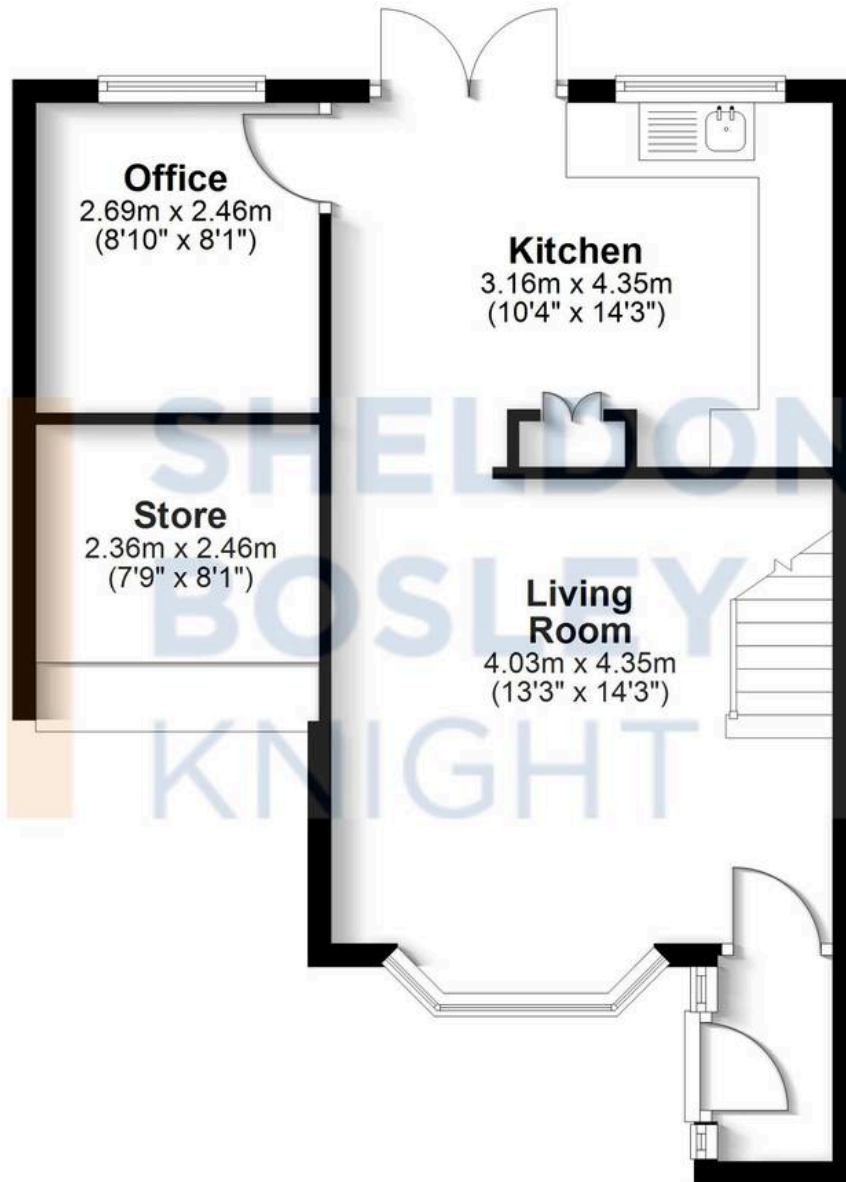
- Semi Detached House On A Corner Plot
- Spacious Lounge
- Dining Kitchen
- Playroom/Study originally the rear section of the garage
- Three Bedrooms with Built In Wardrobes/Cupboards
- Modern Bathroom Suite
- Gas Central Heating PVCu Double Glazing





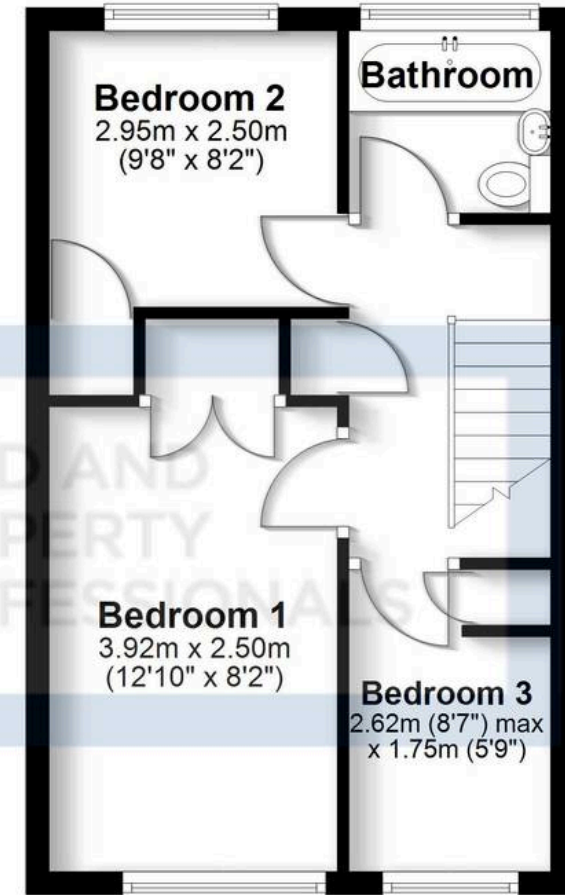
## Ground Floor

Approx. 47.1 sq. metres (507.0 sq. feet)



## First Floor

Approx. 33.6 sq. metres (361.2 sq. feet)



Total area: approx. 80.7 sq. metres (868.1 sq. feet)

All efforts have been made to ensure the measurements are accurate on this floor plan, however these are for guidance purposes only.  
Plan produced using PlanUp.



## Sheldon Bosley Knight Nuneaton

Sheldon Bosley Knight, 39 Newdegate Street, Nuneaton - CV11 4ER

02476374949 • [nuneaton@sheldonbosleyknight.co.uk](mailto:nuneaton@sheldonbosleyknight.co.uk) • [www.sheldonbosleyknight.co.uk/](http://www.sheldonbosleyknight.co.uk/)