



Rosedale Road, Romford
Guide Price £575,000 to £600,000





Rosedale Road

Romford

GUIDE PRICE: £575,000 to £600,000: This impressive four bedroom semi detached house presents an ideal opportunity for families seeking spacious and versatile accommodation. The ground floor features a welcoming entrance hall, a convenient WC, and a generously proportioned open plan kitchen and dining area, designed for modern living and entertaining. Council Tax band: D

Tenure: Freehold

- BEAUTIFULLY PRESENTED FOUR BEDROOM SEMI DETACHED FAMILY HOME
- MODERN OPEN PLAN KITCHEN / DINER
- GROUND FLOOR WC
- EN-SUITE TO BEDROOM 1
- OFF STREET PARKING FRONT AND REAR
- REAR GARDEN APPROXIMATELY 80 FT
- CABIN AT REAR OF THE GARDEN
- GARAGE



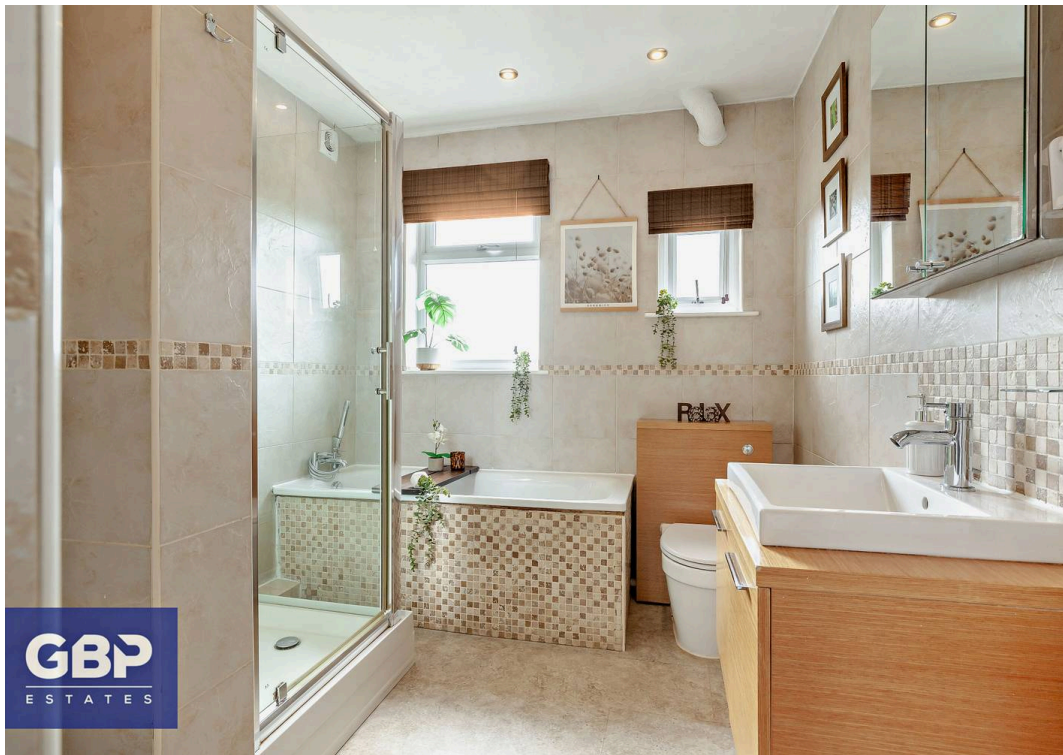
GBP
ESTATES



GBP
ESTATES



GBP
ESTATES



GBP
ESTATES