

*Symonds
Taylor*



23 Woodland Mews, Jesmond

Newcastle Upon Tyne

Guide Price **£165,000**



23 Woodland Mews

Jesmond, Newcastle Upon Tyne

This 2 bedroom second floor apartment is part of this over 60's (over 55's with Anchors Approval) warden controlled block that's located in the heart of Jesmond, close to Acorn Road, with open plan living space and views over St Georges Church gardens.

Accommodation comprises:

Ground floor: Communal landing, lift & stairs to all floors.

Second floor: Communal landing, hallway, open plan sitting room/dining room, kitchen, principal bedroom, bedroom 2, shower room/wc.

Outside: Communal grounds, residents and visitor parking.

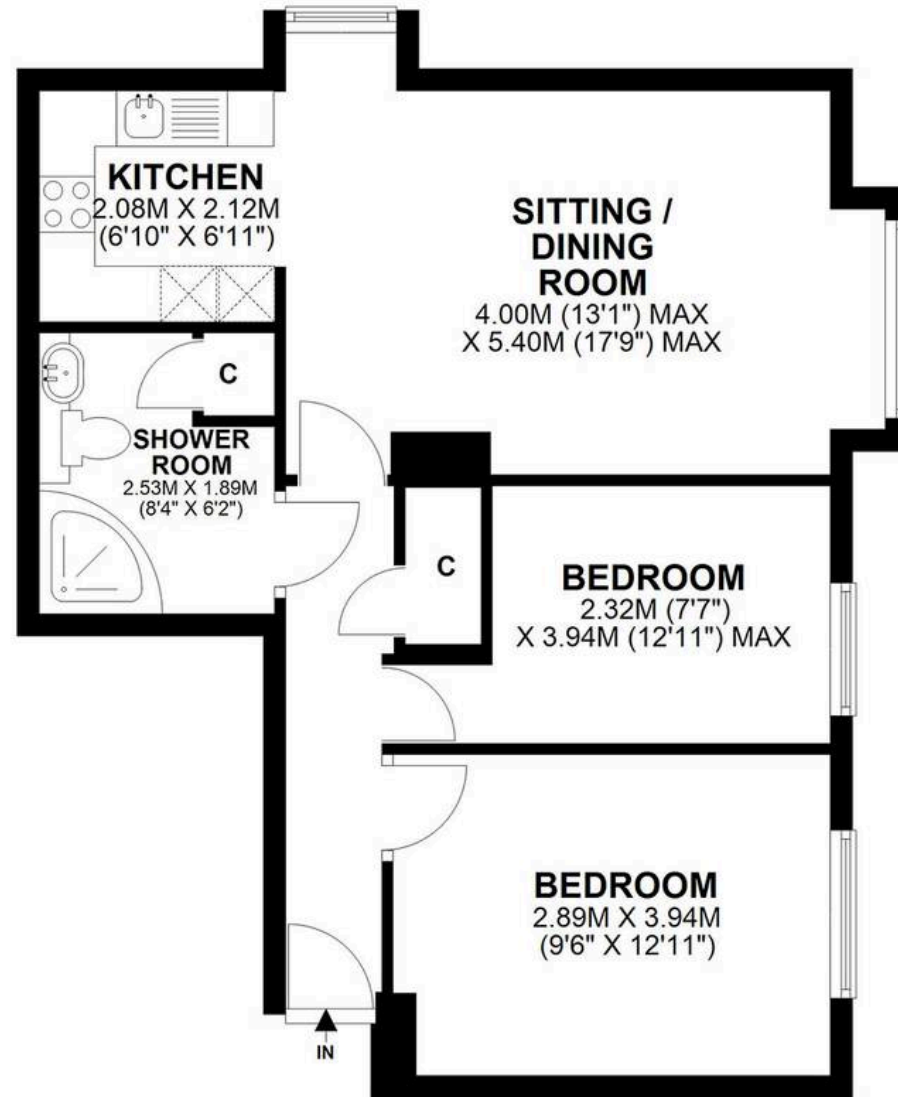
Council Tax band: B

Tenure: Leasehold

EPC Energy Efficiency Rating: C

EPC Environmental Impact Rating: C





2ND FLOOR APARTMENT

23 WOODLAND MEWS, JESMOND, NE2 2ER

APPROXIMATE GROSS INTERNAL AREA 55 SQ M 593 SQ FT - NOT TO SCALE - FOR ILLUSTRATIVE PURPOSES ONLY
All measurements and fixtures including doors and windows are approximate and should be independently verified.





Symonds Taylor

101 St. Georges Terrace, Jesmond - NE2 2DN

0191 338 9999 • hello@symondstaylor.co.uk • www.symondstaylor.co.uk

All descriptions, plans or references to condition are given in good faith only. Whilst every endeavour is made to ensure accuracy, please check with us on any points of especial importance to you.