



21 Long Looms, Great Barrow

Chester

£330,000

**GASCOIGNE  
HALMAN**

THE AREA'S LEADING ESTATE AGENCY



# 21 Long Looms

Great Barrow, Chester

In a village setting and set in a good sized plot with open rural views, this semi-detached family home offers plenty of space and potential for updating and improvement.

Council Tax band: D

Tenure: Freehold

EPC Energy Efficiency Rating: D

EPC Environmental Impact Rating:

- Excellent Semi-Detached House In Village Location
- Large Gardens and Rural Views
- In Same Ownership for Over 60 Years
- Extended and Adaptable Accommodation
- Four Bedrooms and Two Bathrooms
- Scope for Updating and Improvement



## 21 Long Looms

Great Barrow, Chester

This semi-detached house has been in the same ownership since it was built in the 1960's and as such, represents a very rare buying opportunity in Great Barrow.

The house has been well cared for and maintained over the years but now provides an opportunity for new owners to invest to update, improve and personalise. It offers larger accommodation than may at first be apparent due to a substantial ground floor extension at the rear. This creates a layout that is both spacious and adaptable, suitable for larger and extended families and home workers.

The large private gardens back on to open countryside and provide colour and interest all year.

The accommodation comprises of three bedrooms and a bathroom at first floor level. The ground floor offers two living rooms, a fitted kitchen, utility room and a large additional ground floor room that can be used as a fourth bedroom, sitting room or home office. There is also a ground floor shower room creating the potential for this to be an annexe. There is a single garage and ample driveway parking.

Gas fired central heating is installed and double glazing fitted throughout.

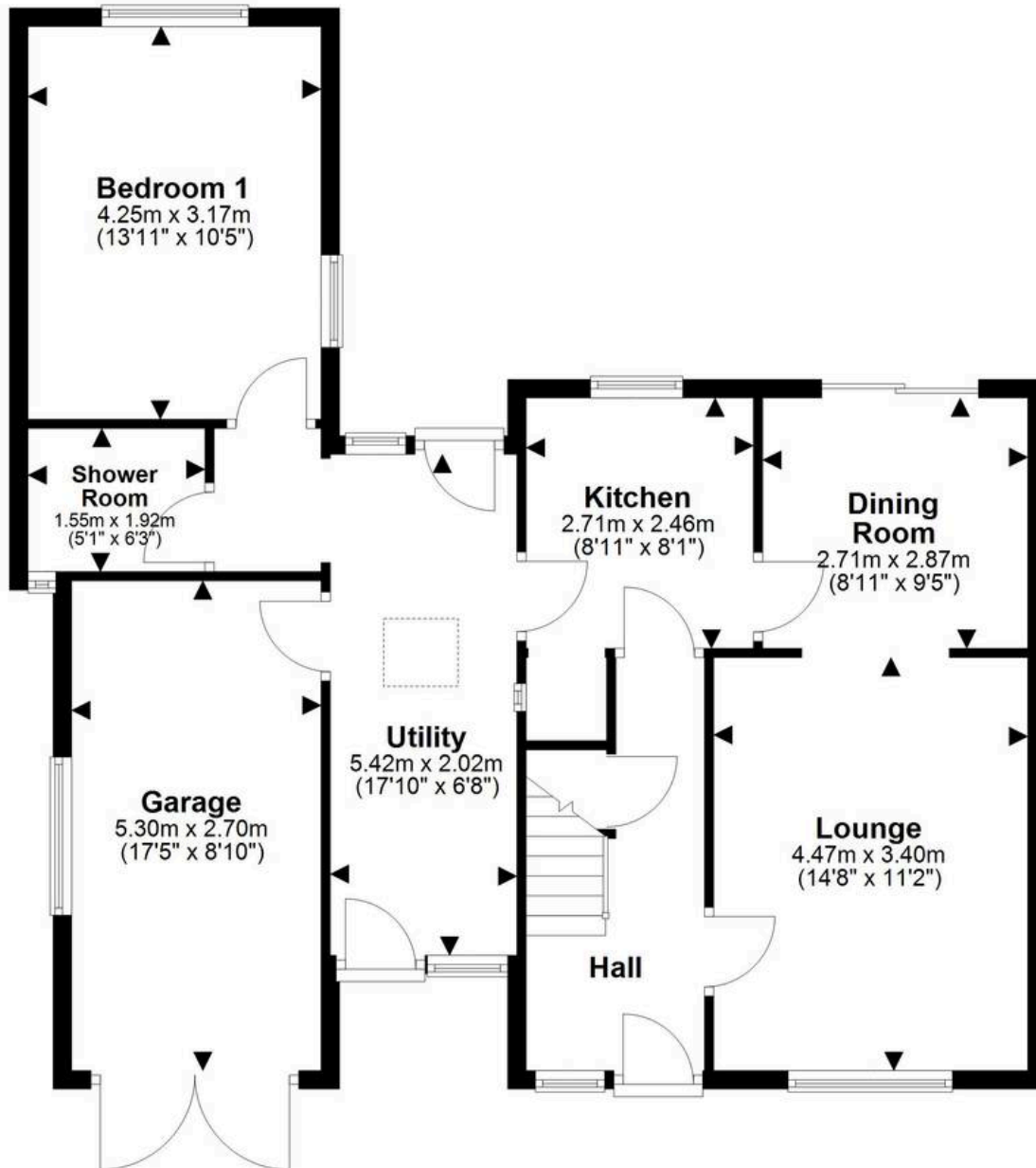
Please note that the sale of the property is subject to receipt of Grant of Probate. Please obtain an update from the branch with regards to potential timeframes involved.

Great Barrow is sought after rural village, surrounded by open Cheshire countryside. It is conveniently located just 5 miles to the east of Chester and 7.5 miles from Frodsham. The village



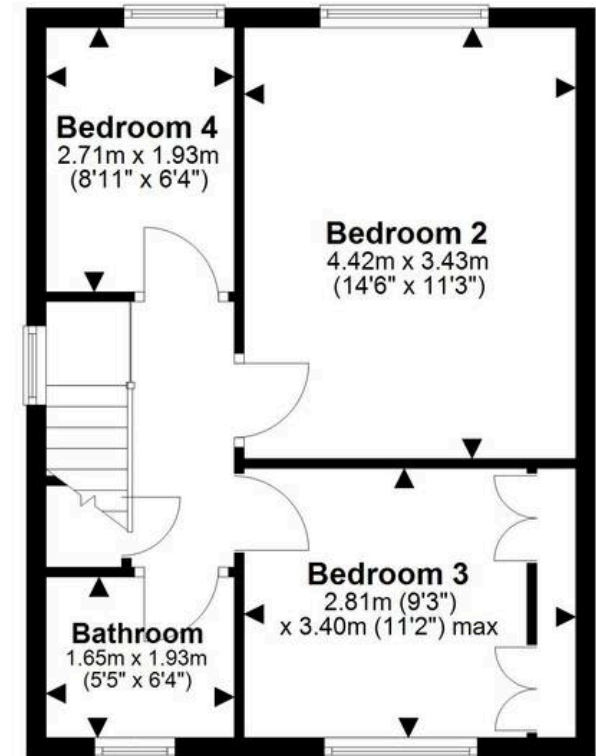
## Ground Floor

Approx. 84.9 sq. metres (913.4 sq. feet)



## First Floor

Approx. 39.8 sq. metres (428.8 sq. feet)



Total area: approx. 124.7 sq. metres (1342.1 sq. feet)

You can include any text here. The text can be modified upon generating your brochure.



THE AREA'S LEADING ESTATE AGENCY