



Chirk Close, Hayes
Offers in Region of **£585,000**

SAB
ESTATES



Chirk Close

Hayes

- Chain Free
- Garage
- Potential to Extend STPP
- Ground-floor WC / Utility
- Quiet Residential Cul-de-sac
- Driveway for Two Cars
- Private Rear Garden with Side Access
- Master Bedroom with Ensuite

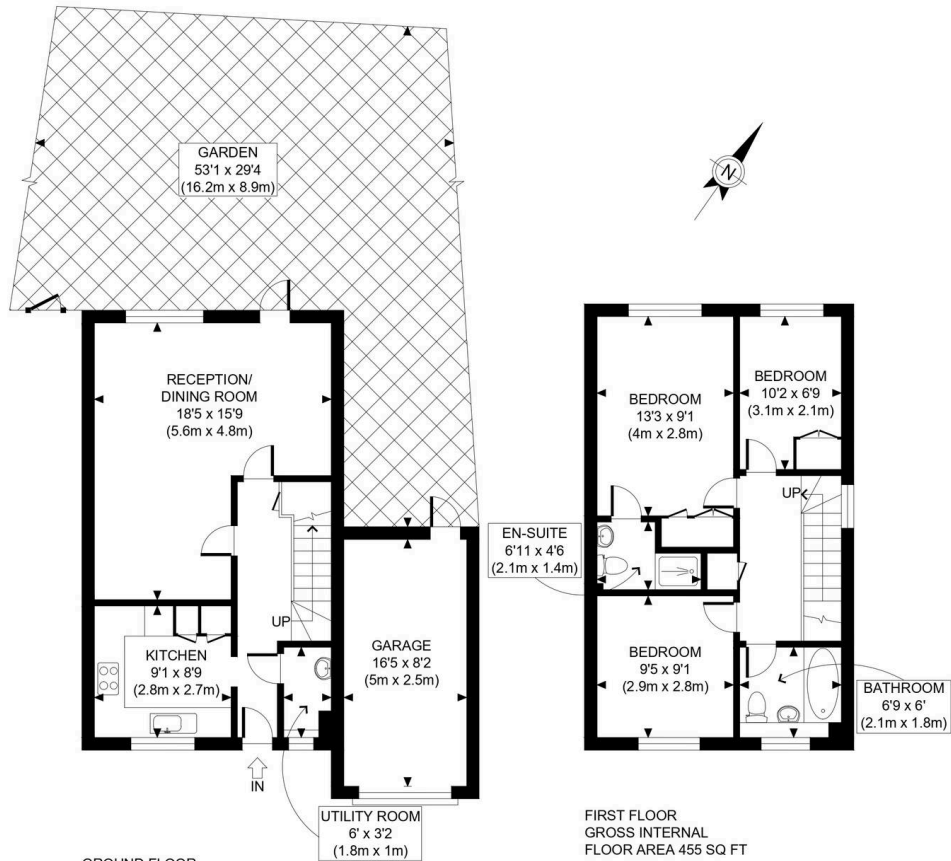
Council Tax band: E

Tenure: Freehold

EPC Energy Efficiency Rating: C

EPC Environmental Impact Rating: C





APPROX. GROSS INTERNAL FLOOR AREA WITH GARAGE: 1034 SQ FT/ 96 SQM
 APPROX. GROSS INTERNAL FLOOR AREA WITHOUT GARAGE: 889 SQ FT/ 83 SQM

This plan is for illustrative purposes only and should be used as such by any prospective client. Whilst every attempt has been made to ensure the accuracy of the Floor Plan contained here, measurements of the doors, windows, rooms and any other items are approximate and no responsibility is taken for any errors, omissions, or misstatement. The services, systems and appliances shown have not been tested and no guarantee as to the operability or efficiency can be given.





SAB Estates

236-238 Ruislip Road, Greenford - UB6 9RS

020 8575 2929 • info@sabestates.com • www.sabestates.com/