

Coronation Court, Brewster Gardens,
North Kensington W10

£500,000

Coronation Court

North Kensington W10

Thoughtfully updated, the flat offers a balanced layout with a bright rear-facing reception room and a separate, contemporary kitchen. Natural light draws through the space, enhancing the clean, pared-back palette of crisp white walls and painted wood flooring.

Both bedrooms are comfortable doubles, each with fitted storage, while a well-appointed bathroom completes the accommodation. Residents also benefit from access to communal gardens and secure entry via entryphone.

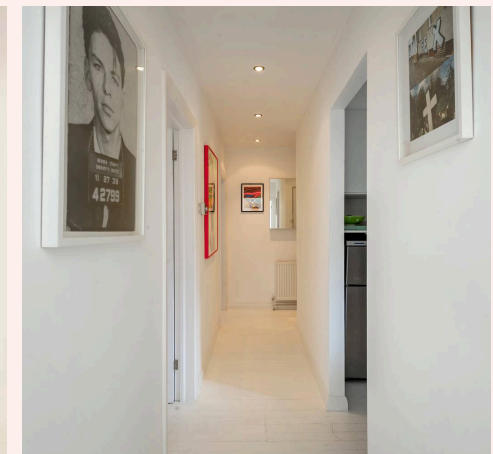
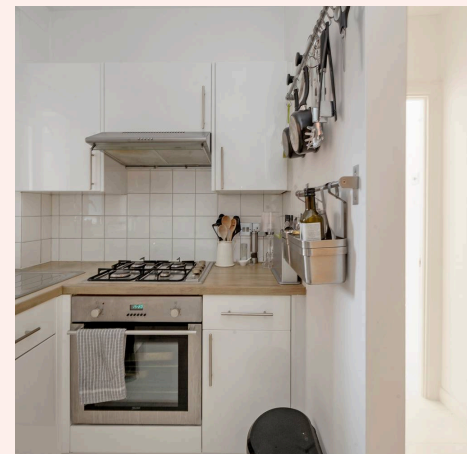
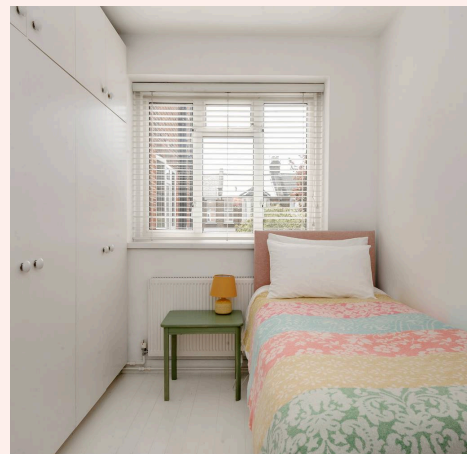
Positioned on a quiet residential street, the apartment is within easy reach of green open spaces including Kensington Memorial Park and Little Wormwood Scrubs, as well as the everyday amenities of North Kensington.

Council Tax band: C

Tenure: Leasehold

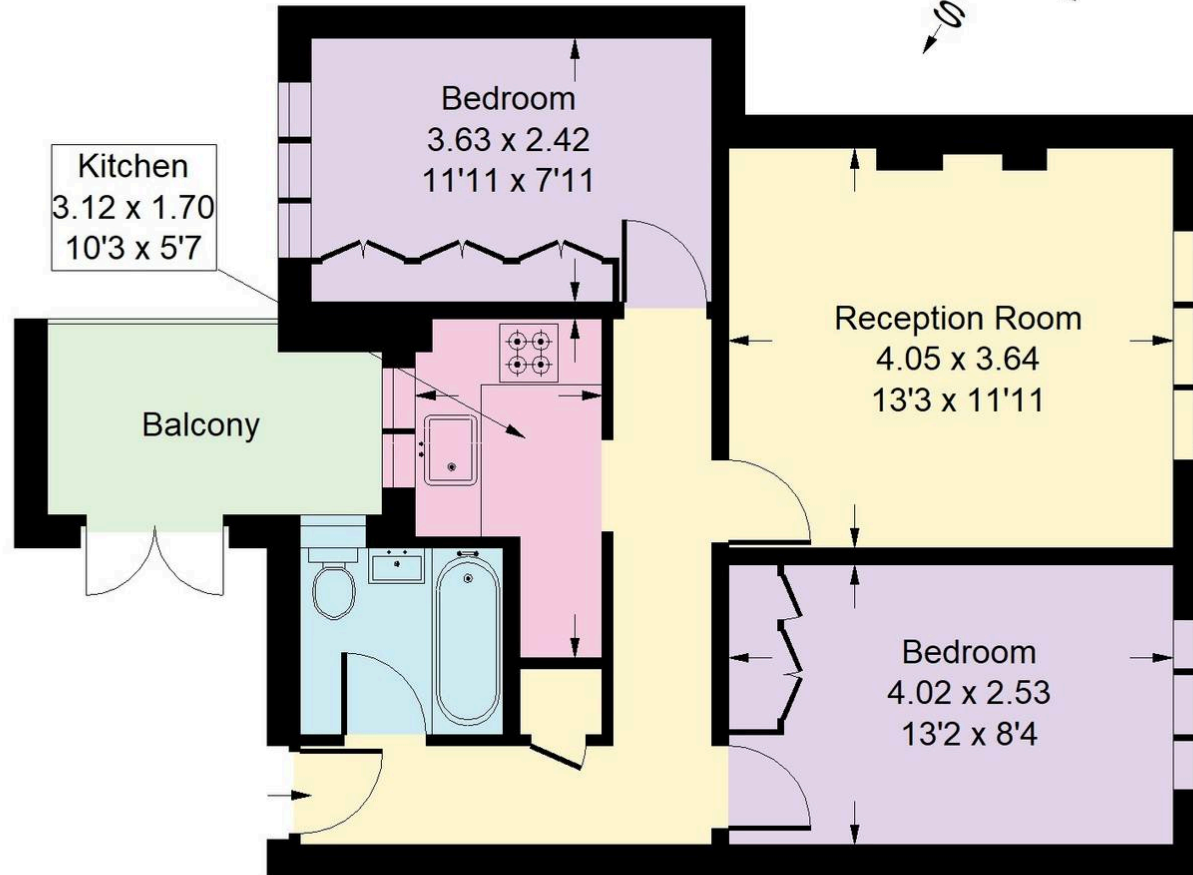
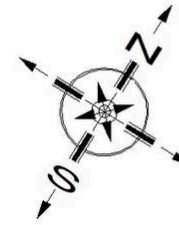
EPC Energy Efficiency Rating: C

EPC Environmental Impact Rating: B



Coronation Court, W10

Approx. Gross Internal Area
51.6 sq m / 555 sq ft



First Floor

Whilst every attempt has been made to ensure the accuracy of the floor plan, measurements are approximate and not to scale.
No guarantee is given on the total square footage of the property quoted on the plan. Figures given are for guidance.
Plan is for illustration purposes only, not to be used for valuations.



Rigby & Marchant

115 Westbourne Studios 242 Acklam Road, London - W10 5JJ

020 7221 7210

sales@rigbyandmarchant.co.uk

www.rigbyandmarchant.co.uk/

R&M