



Spring Bank Badger Road, Prestbury  
Macclesfield

Guide Price £1,500,000

**GASCOIGNE  
HALMAN**

THE AREA'S LEADING ESTATE AGENCY



# Spring Bank Badger Road

Prestbury, Macclesfield

A substantial, modern bungalow, set within a private plot, tucked away off Badger Road and just a short walk from Prestbury Village and its Local amenities.

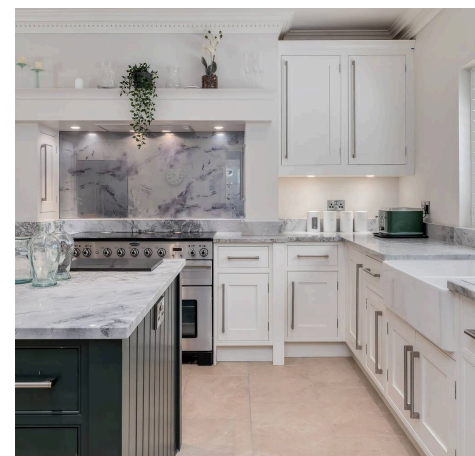
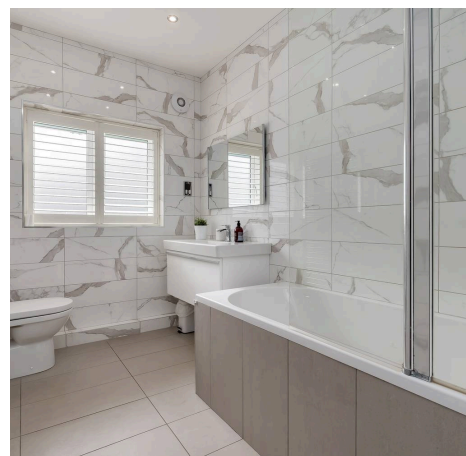
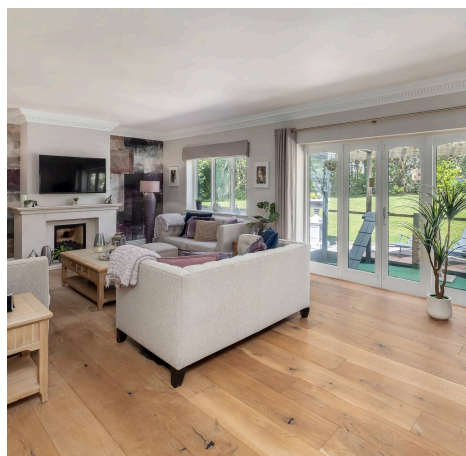
Spring Bank is a striking detached residence set within approximately 0.82 acres of established, beautifully landscaped grounds. Offering an exceptional standard of living, this impressive home combines refined design with everyday comfort, all within the desirable village setting of Prestbury. A sweeping driveway leads to an elegant frontage, immediately hinting at the quality and space found throughout.

Tenure: Freehold

EPC Energy Efficiency Rating: C

EPC Environmental Impact Rating: C

- MODERN FITTINGS THROUGHOUT
- LARGE DETACHED BUNGALOW
- PRIVATE LOCATION
- CLOSE TO THE HEART OF PRESTBURY VILLAGE
- SET ON 0.82 ACRES OF MATURE GROUNDS



# Spring Bank Badger Road

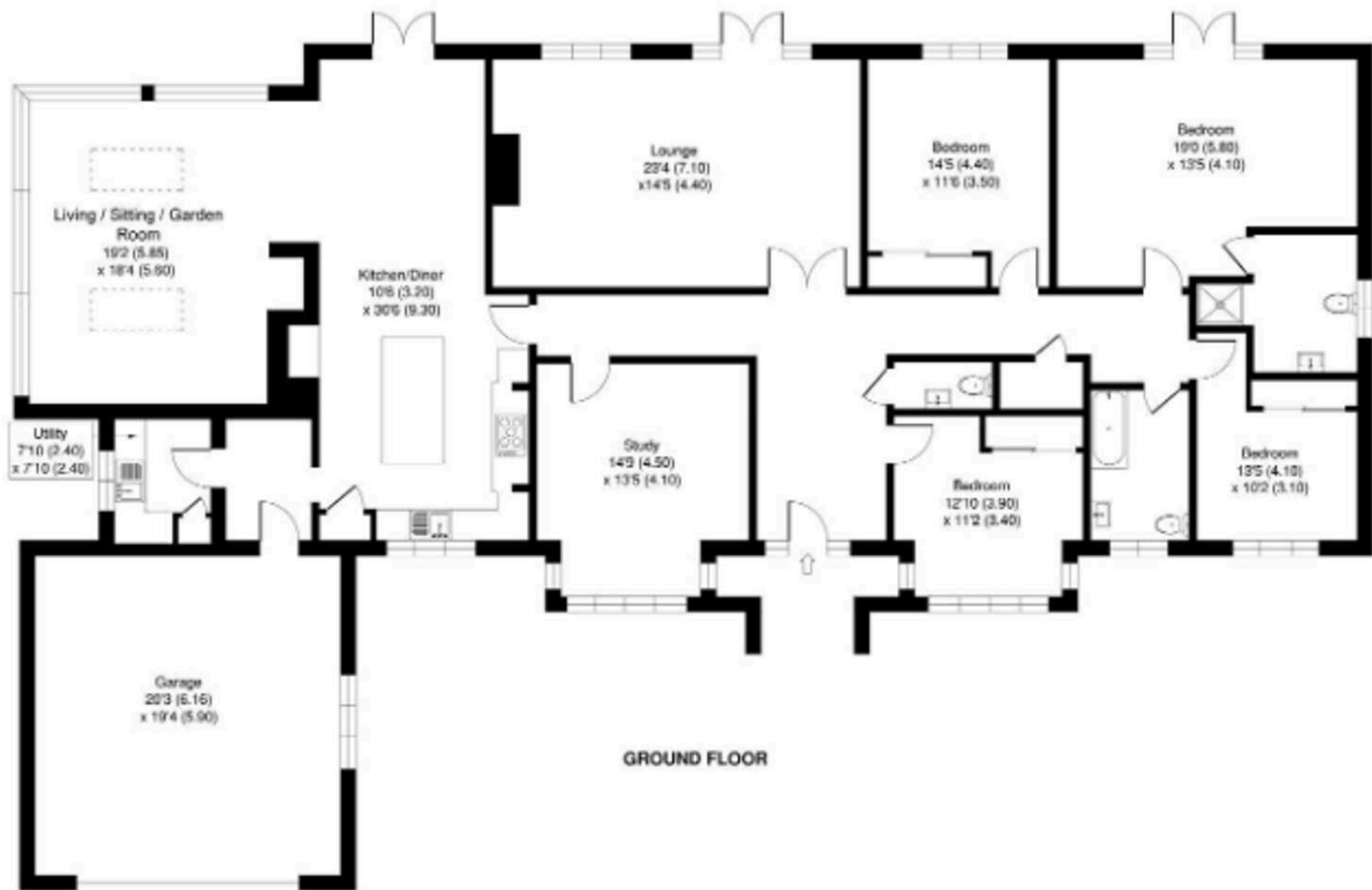
Prestbury, Macclesfield

The interior has been thoughtfully modernised to a high specification, creating a stylish yet welcoming environment. At the centre of the home is a contemporary kitchen, expertly fitted with integrated appliances from Miele and complemented by sleek finishes. This space opens naturally into a generous dining area, which in turn connects to a bright and airy living zone. Overhead skylights allow natural light to pour in, enhancing the sense of openness and creating an inviting atmosphere suited to both relaxed family life and entertaining. A separate lounge provides a peaceful space to unwind, enjoying views across the surrounding gardens. Further accommodation includes a dedicated home office, a tasteful cloakroom, a practical utility room, with an integral double garage.

The sleeping quarters consist of four well-proportioned bedrooms, all presented with care and attention. The principal bedroom enjoys its own en-suite facilities, while the remaining rooms are served by a stylish family bathroom. Both bathrooms are finished with high-quality fittings, adding a touch of modern luxury.

Externally, the grounds are a defining feature of the property. The gardens wrap around the home, offering expansive lawns, mature planting, and a substantial patio area ideal for outdoor dining and social gatherings. Combining space, privacy, and a prime location, Spring Bank represents a superb opportunity to acquire a truly special home.





You can include any text here. The text can be modified upon generating your brochure.



THE AREA'S LEADING ESTATE AGENCY