



62 Firbank Road, Manchester

Manchester

£380,000

**GASCOIGNE
HALMAN**

THE AREA'S LEADING ESTATE AGENCY



62 Firbank Road

Manchester, Manchester

A fantastic opportunity to acquire this spacious four-bedroom detached bungalow, ideally positioned on a generous plot in a popular residential area of Wythenshawe. Viewings come highly recommended.

Council Tax band: D

Tenure: Freehold

EPC Energy Efficiency Rating: E

EPC Environmental Impact Rating: E

- Prime Wythenshawe location with easy access to Manchester Airport and the M56 motorway
- Flexible layout ideal for families, downsizers or home working
- Spacious four-bedroom detached bungalow on a generous plot
- Bright and airy lounge with excellent natural light
- Enclosed rear garden perfect for relaxing or entertaining



62 Firbank Road

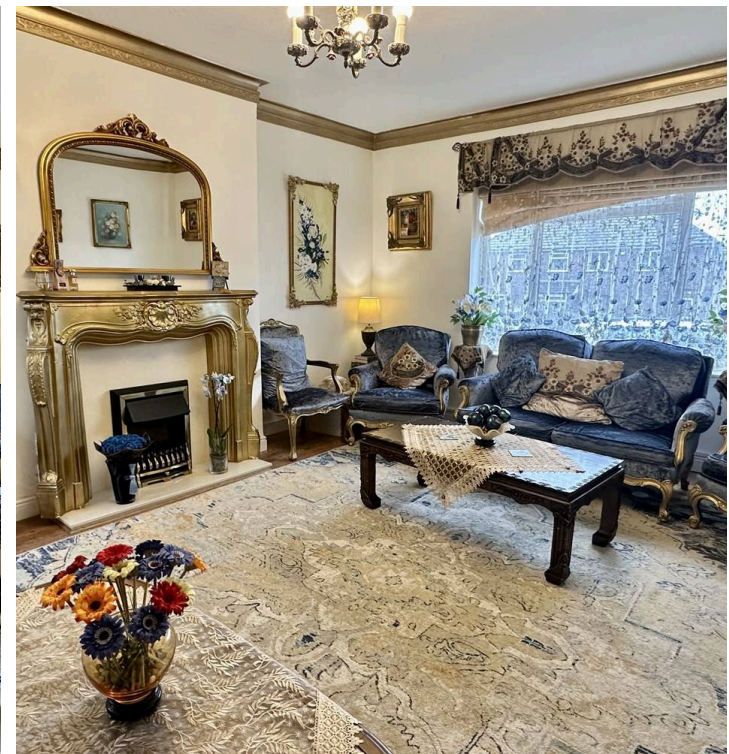
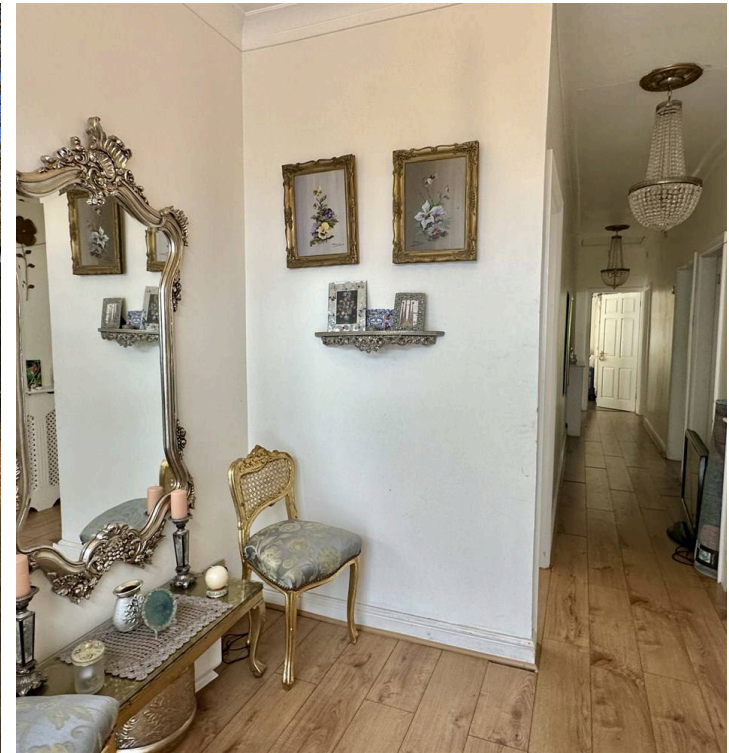
Manchester, Manchester

This well-proportioned home offers versatile single-level living, perfect for families, downsizers, or anyone seeking flexible accommodation. The property features a bright and welcoming entrance hallway, a generous lounge with large windows allowing plenty of natural light, and a well-appointed kitchen with ample storage and workspace. The four bedrooms provide excellent flexibility for guest rooms, home offices, or additional reception space, while the family bathroom is complemented by additional convenient facilities.

Externally, the property benefits from a private driveway providing off-road parking, an attached annexe, and well-maintained front and rear gardens offering both privacy and space for outdoor entertaining or relaxation.

Located within easy reach of local shops, schools, and amenities, as well as excellent transport links including the nearby Manchester Airport and the M56 motorway, this property combines peaceful residential living with superb connectivity.

Early viewing is highly recommended to appreciate the size, location, and potential this superb bungalow has to offer.





62 Firbank Road

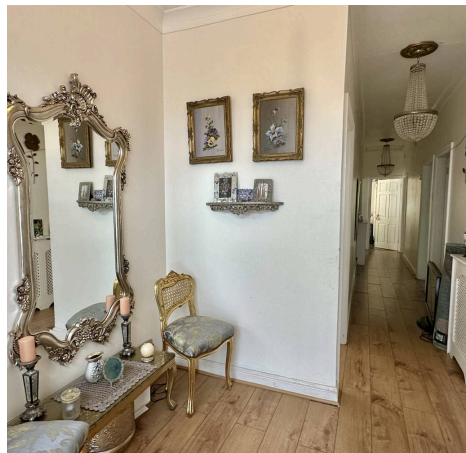
Manchester, Manchester

This well-proportioned home offers versatile single-level living, perfect for families, downsizers, or anyone seeking flexible accommodation. The property features a bright and welcoming entrance hallway, a generous lounge with large windows allowing plenty of natural light, and a well-appointed kitchen with ample storage and workspace. The four bedrooms provide excellent flexibility for guest rooms, home offices, or additional reception space, while the family bathroom is complemented by additional convenient facilities.

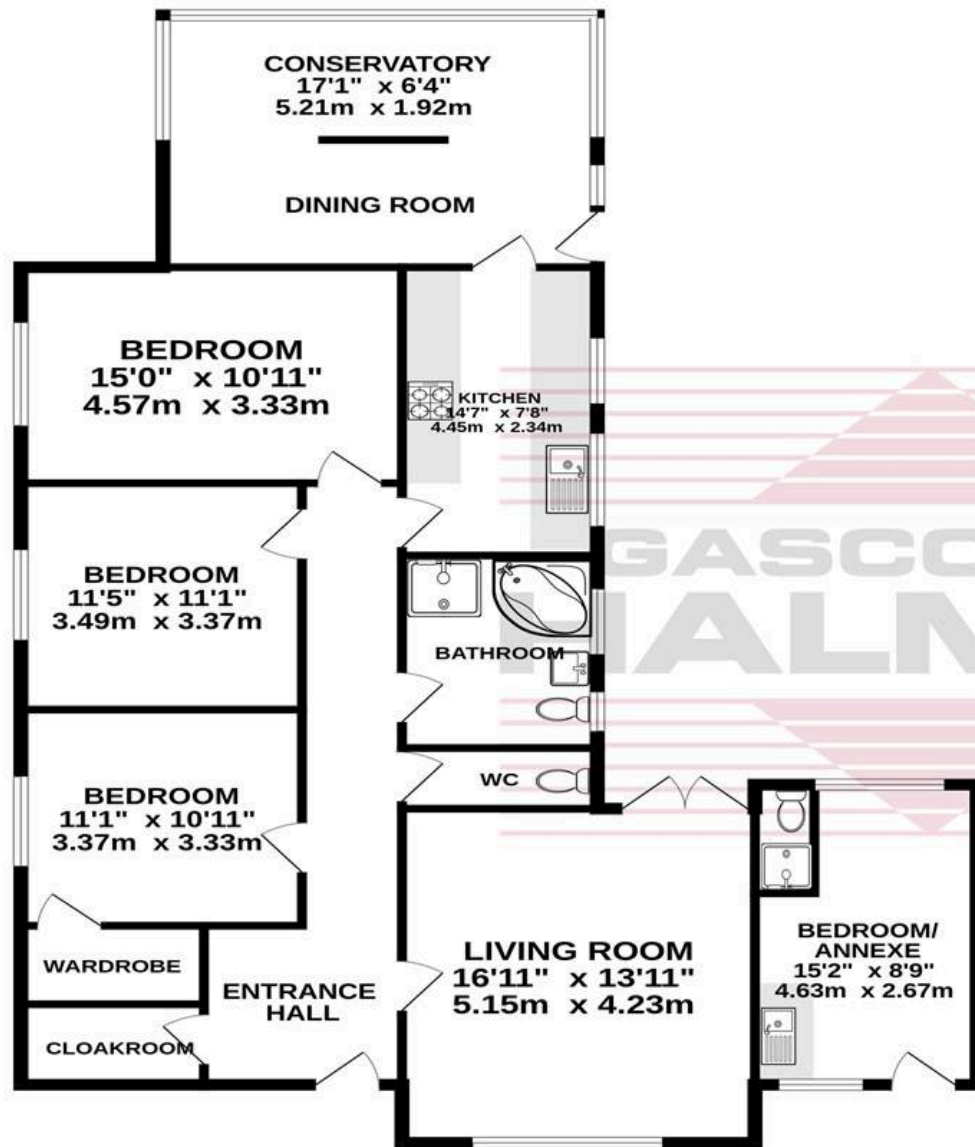
Externally, the property benefits from a private driveway providing off-road parking, an attached annexe, and well-maintained front and rear gardens offering both privacy and space for outdoor entertaining or relaxation.

Located within easy reach of local shops, schools, and amenities, as well as excellent transport links including the nearby Manchester Airport and the M56 motorway, this property combines peaceful residential living with superb connectivity.

Early viewing is highly recommended to appreciate the size, location, and potential this superb bungalow has to offer.



GROUND FLOOR
1417 sq.ft. (131.6 sq.m.) approx.



1ST FLOOR
654 sq.ft. (60.8 sq.m.) approx.



TOTAL FLOOR AREA : 2071 sq.ft. (192.4 sq.m.) approx.

Whilst every attempt has been made to ensure the accuracy of the floorplan contained here, measurements of doors, windows, rooms and any other items are approximate and no responsibility is taken for any error, omission or mis-statement. This plan is for illustrative purposes only and should be used as such by any prospective purchaser. The services, systems and appliances shown have not been tested and no guarantee as to their operability or efficiency can be given.
Made with Metropix ©2026

You can include any text here. The text can be modified upon generating your brochure.



THE AREA'S LEADING ESTATE AGENCY