



4 Elm Avenue, Carlton – NG4 3DD

Guide Price £180,000 – £190,000



4 Elm Avenue

Carlton, Nottingham

GUIDE PRICE £180,000-£190,000 Mid-terraced home with 2 double beds, lounge/dining room, kitchen and a first floor bathroom plus a westerly-facing garden. Close to amenities & public transport links!

Council Tax band: A

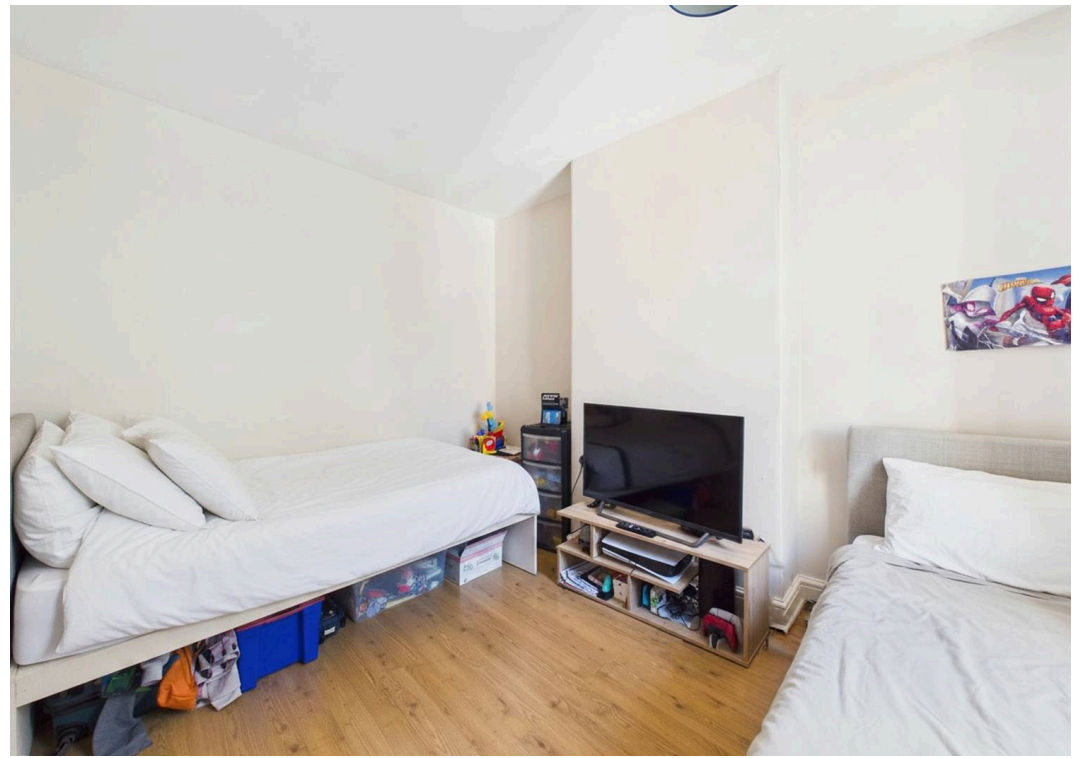
Tenure: Freehold

EPC Energy Efficiency Rating: D

EPC Environmental Impact Rating: D

- Mid-terraced house offering character and practical living space
- Well-suited to first-time buyers, investors or those simply seeking a well-connected location
- Conveniently positioned close to a wide range of local amenities and transport links
- Spacious open plan lounge and dining area with a feature fireplace and wood finish flooring
- Fitted kitchen with ample worktop space and integrated cooking appliances
- Versatile first floor landing area suitable as a study, dressing or seating area
- Two well-proportioned double bedrooms offering comfortable accommodation
- Good-sized bathroom fitted with a three-piece suite including a corner bath with shower over
- Enclosed and westerly-facing garden with patio seating space and lawn
- On-street parking to the front of the property







Floor 0

Approximate total area⁽¹⁾
82.7 m²
891 ft²



Floor 1

(1) Excluding balconies and terraces

Reduced headroom
..... Below 1.5 m/5 ft

Calculations reference the RICS IPMS 3C standard. Measurements are approximate and not to scale. This floor plan is intended for illustration only.



David James Estate Agents

376 Carlton Hill, Carlton - NG4 1JA

0115 987 8957 • carlton@david-james.com • www.david-james.com

These particulars are produced in good faith and are set out as a general guide only. Measurements are approximate and floor plans are for illustrative purposes only. Services have not been tested. We have established professional relationships with third-party suppliers for the provision of services to Clients, details of which can be found on the property listing page on our website.