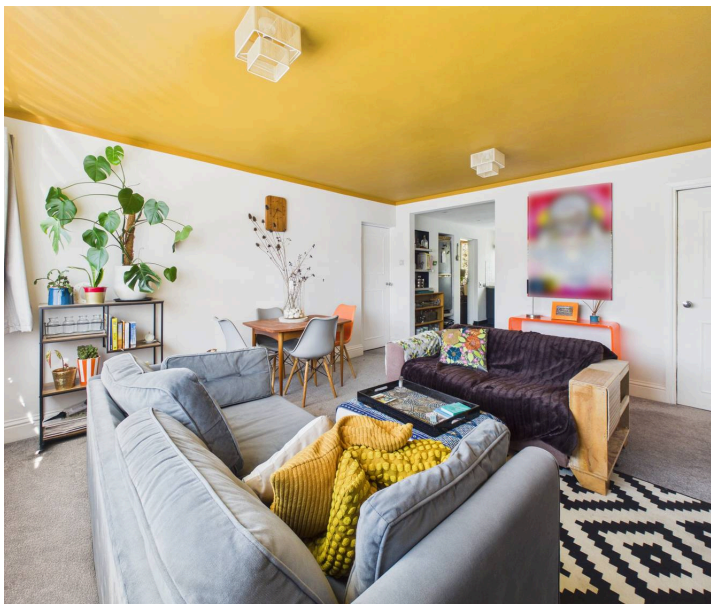
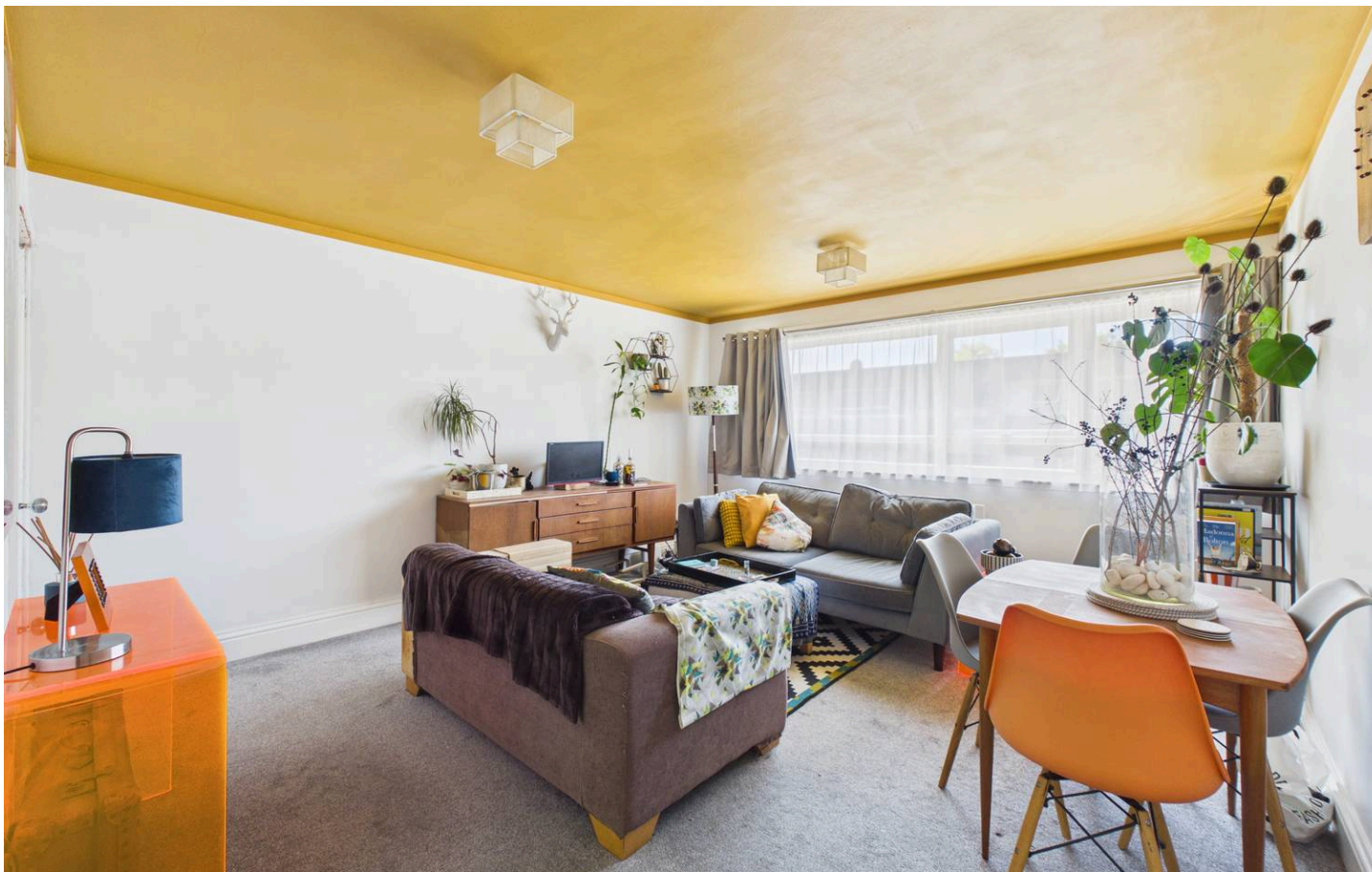




19 Elm Close, Nottingham - NG3 5AH

Guide Price £140,000



19 Elm Close

Nottingham, Nottingham

FANTASTIC MAPPERLEY PARK OPPORTUNITY! Two-bed first floor flat with modern kitchen, lounge/dining room, shared balcony, garage in block. Perfect for first-time buyers, professionals & savvy investors.

Council Tax band: A

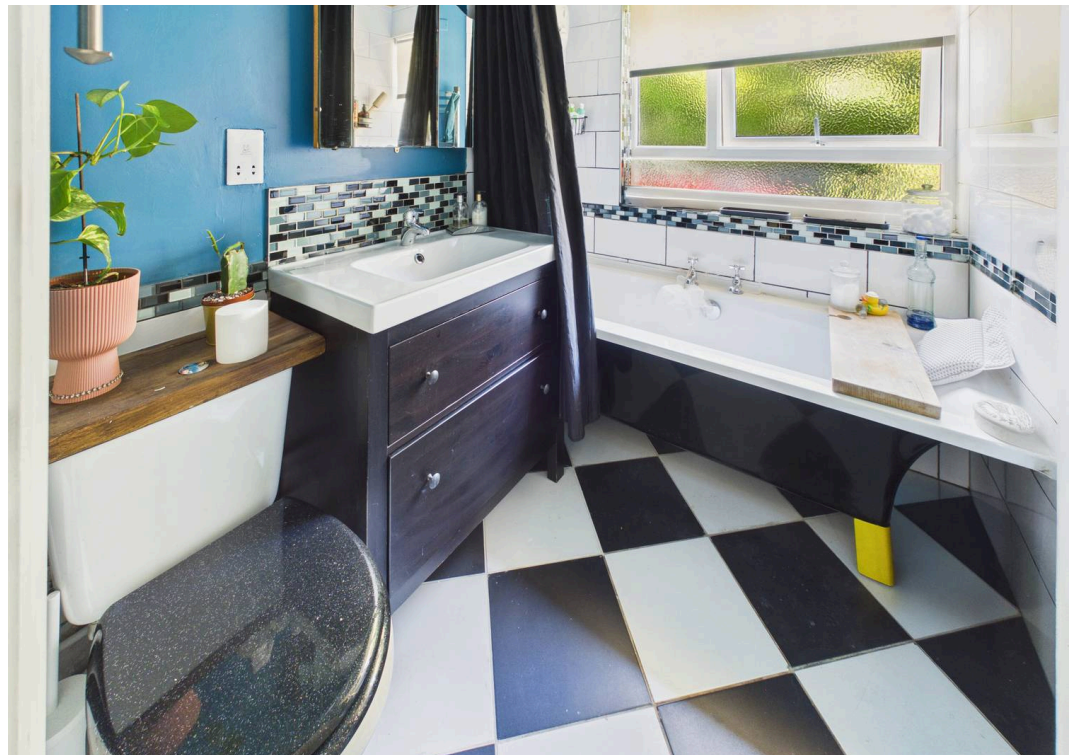
Tenure: Leasehold

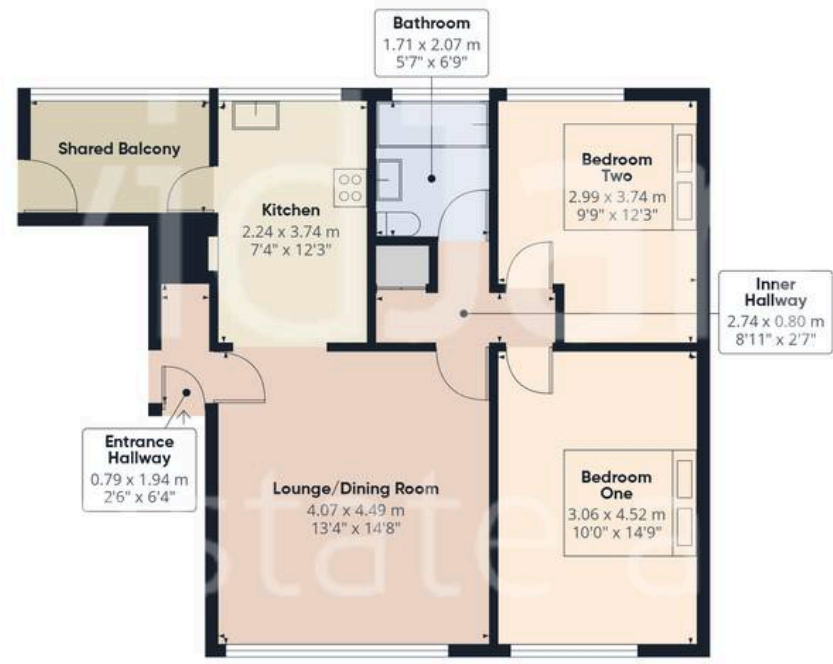
EPC Energy Efficiency Rating: D

EPC Environmental Impact Rating: D

- Spacious first floor flat located in the leafy Mapperley Park
- Nottingham's extensive amenities, shops and transport links close by
- Ideal for first-time buyers, city-commuting professionals and investors
- Bright lounge/dining room with space for relaxing and entertaining
- Well-equipped fitted kitchen with a range of integrated appliances
- Two well-proportioned double bedrooms (both with wardrobe storage)
- Three-piece bathroom suite with vanity storage
- Shared balcony providing valuable outside space
- Secure gated car park with a garage in block providing off-street parking
- Beautiful communal gardens creating a vibrant shared retreat







Floor 0 Building 1



Floor 0 Building 2

Approximate total area⁽¹⁾

64.9 m²
698 ft²

(1) Excluding balconies and terraces

Calculations reference the RICS IPMS 3C standard. Measurements are approximate and not to scale. This floor plan is intended for illustration only.

GIRAFFE360



David James Estate Agents

David James Estate Agents, 45B Plains Road – NG3 5JU

0115 962 4213 • mapperley@david-james.com • www.david-james.com

These particulars are produced in good faith and are set out as a general guide only. Measurements are approximate and floor plans are for illustrative purposes only. Services have not been tested. We have established professional relationships with third-party suppliers for the provision of services to Clients, details of which can be found on the property listing page on our website.