



The Ridge Richmond Road, Bowdon  
Altrincham

£850,000

**GASCOIGNE  
HALMAN**

THE AREA'S LEADING ESTATE AGENCY



# The Ridge Richmond Road

Bowdon, Altrincham

Elegant Georgian terrace in Old Bowdon with 1,850 sq ft over four floors, four bedrooms, private courtyards, garage, parking, and period features. Opportunity to modernise. Prime location. Council Tax band: F

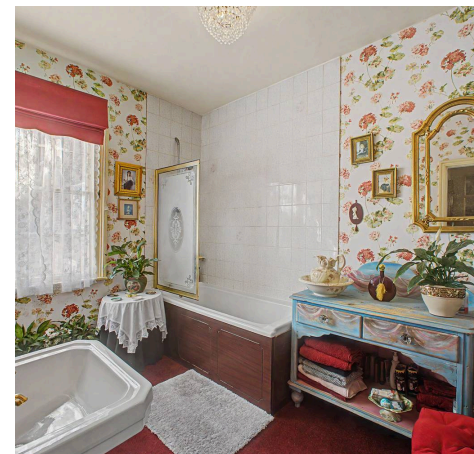
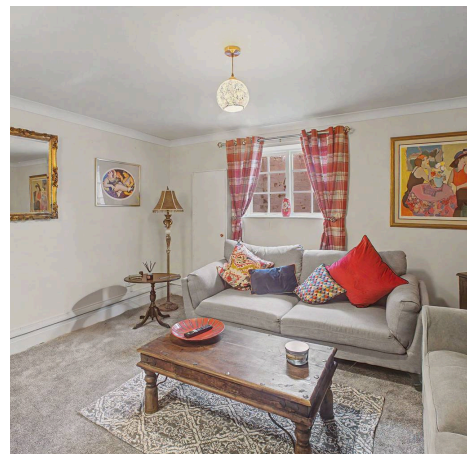
Tenure: Freehold

EPC Energy Efficiency Rating: D

EPC Environmental Impact Rating: E

- A Georgian Terrace
- Four Bedrooms
- Family Bathroom
- Gated Entrance to Parking Area and Garage
- Courtyard Gardens

Occupying a premier position at the junction of Stamford Road and Richmond Road, this strikingly attractive Georgian terrace offers approximately 1,850 square feet of versatile living space arranged over four floors. Set within the historic soul of 'Old Bowdon', the property enjoys quintessential views toward Bowdon Church and sits just steps away from the celebrated Griffin and Stamford Arms. While impeccably maintained and full of character—boasting high coved ceilings and classic multi-paned sash windows—the home offers a rare opportunity for a discerning purchaser to modernise the interior to their own bespoke specification.



# The Ridge Richmond Road

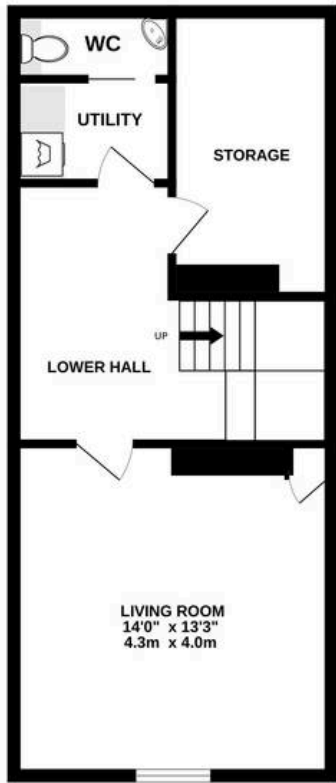
Bowdon, Altrincham

The accommodation opens with an inviting entrance hall featuring a traditional fanlight window and a central spindled staircase. The ground floor comprises a formal lounge centered around an attractive fireplace and a spacious dining kitchen that serves as the heart of the home, offering direct access to the private courtyard. The lower ground floor has been thoughtfully converted to provide a flexible sitting room with lightwell access, alongside a functional laundry room, utility area, and guest WC. Across the two upper levels, four well-proportioned bedrooms are served by a large family bathroom, with the top-floor rooms enjoying elevated views toward the church and across the horizon.

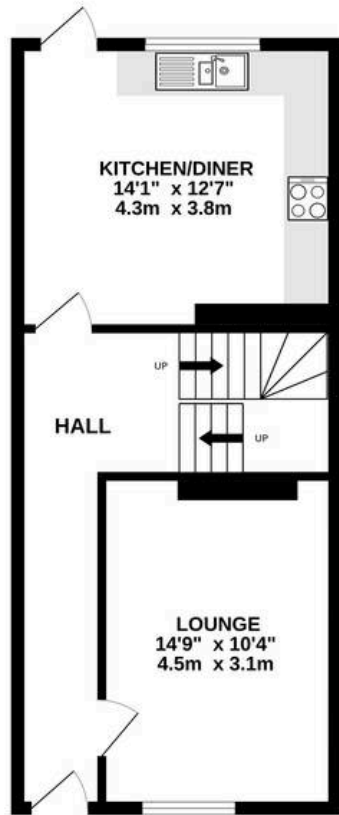
Externally, the property is far more expansive than it first appears. Secure, remote-controlled gated access from West Road leads to a private gravelled parking area with space for at least two vehicles, complemented by a detached brick-built garage. The outdoor spaces are designed for low-maintenance enjoyment, featuring two distinct stone-paved courtyard gardens enclosed by classic brick walling, providing a secluded setting for alfresco dining and relaxation.



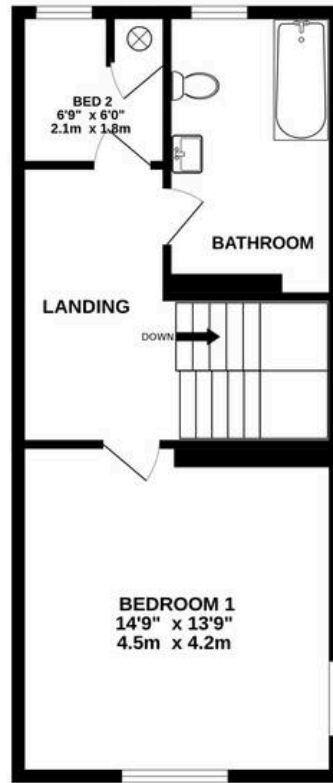
LOWER GROUND FLOOR



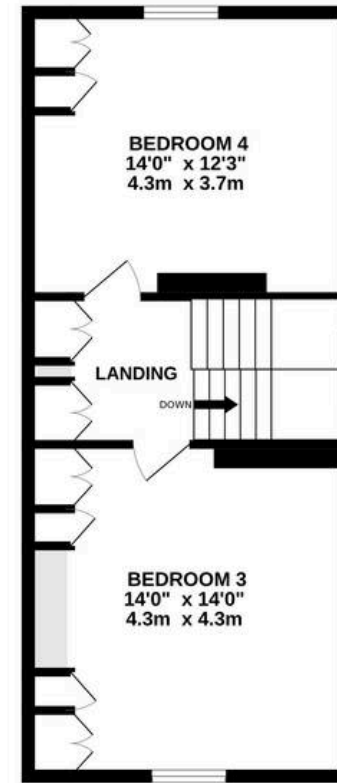
GROUND FLOOR



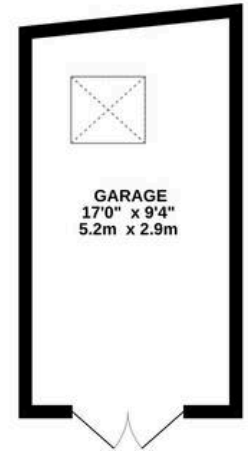
1ST FLOOR



2ND FLOOR



GARAGE  
162 sq.ft. (15.0 sq.m.) approx.



TOTAL FLOOR AREA : 1848sq.ft. (171.7 sq.m.) approx.

Whilst every attempt has been made to ensure the accuracy of the floorplan contained here, measurements of doors, windows, rooms and any other items are approximate and no responsibility is taken for any error, omission or mis-statement. This plan is for illustrative purposes only and should be used as such by any prospective purchaser. The services, systems and appliances shown have not been tested and no guarantee as to their operability or efficiency can be given.

Made with Metropix ©2026



THE AREA'S LEADING ESTATE AGENCY