

*Symonds  
Taylor*

**41 Briarfield Road, Gosforth**

Newcastle Upon Tyne

Guide Price **£420,000**



# 41 Briarfield Road

Gosforth, Newcastle Upon Tyne

This semi detached family home is located in central Gosforth, close to a choice of schools on a highly sought after street with driveway, garage & gardens that will have to be viewed to be appreciated.

## Accommodation comprises:

**Ground floor:** Hallway, cloakroom/wc, sitting room, dining room, breakfasting kitchen, sun room.

**First floor:** Principal bedroom, bedroom 2, bedroom 3/home office, family bathroom.

**Outside:** Front town garden, driveway, off street parking, attached garage, rear garden.

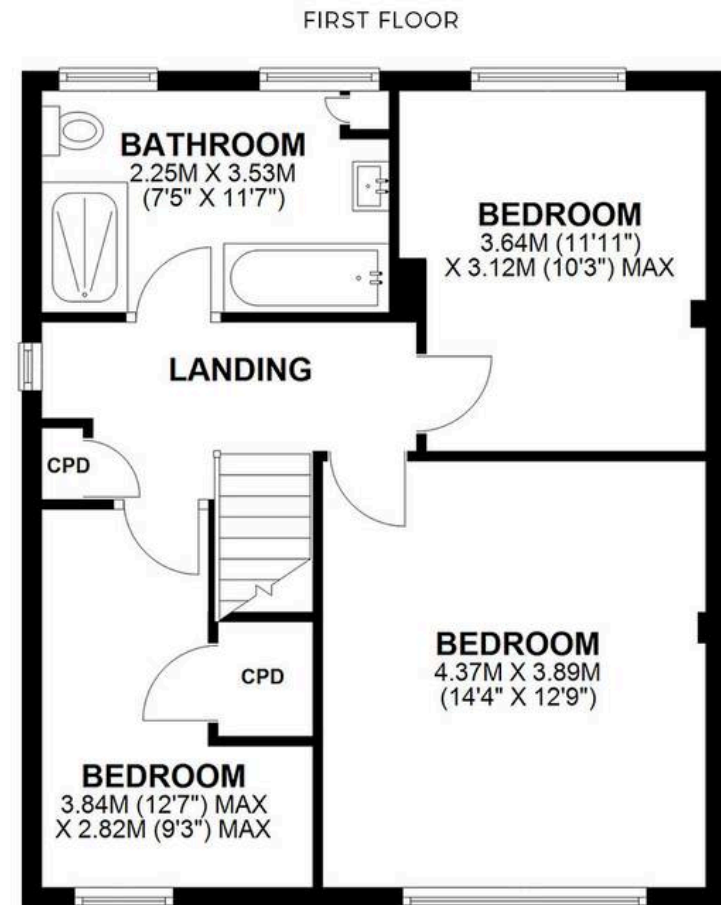
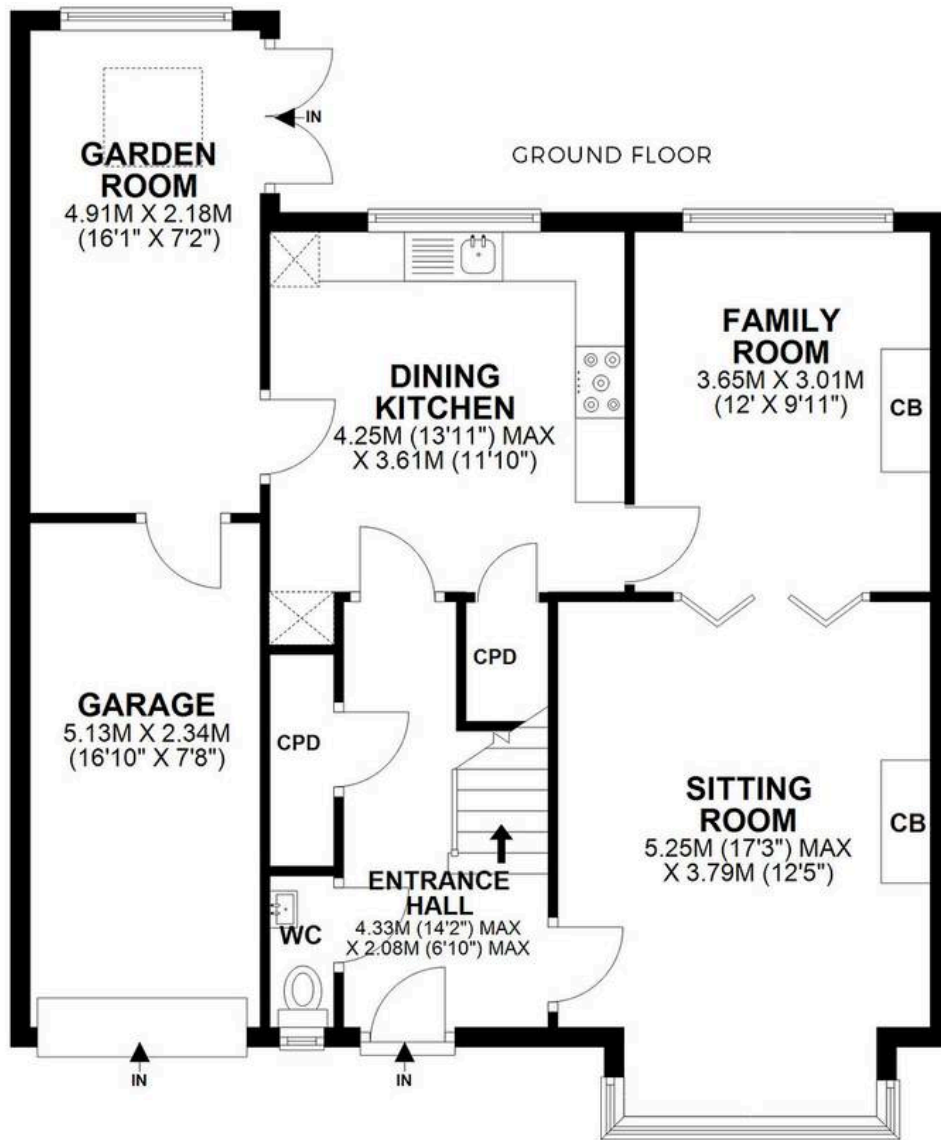
Council Tax band: D

Tenure: Freehold

EPC Energy Efficiency Rating: D

EPC Environmental Impact Rating: E





**41 BRIARFIELD ROAD, GOSFORTH, NE3 3UH**

APPROXIMATE GROSS INTERNAL AREA 118 SQ M 1271 SQ FT - NOT TO SCALE - FOR ILLUSTRATIVE PURPOSES ONLY  
All measurements and fixtures including doors and windows are approximate and should be independently verified.





## **Symonds Taylor**

101 St. Georges Terrace, Jesmond - NE2 2DN

0191 338 9999 • [hello@symondstaylor.co.uk](mailto:hello@symondstaylor.co.uk) • [www.symondstaylor.co.uk](http://www.symondstaylor.co.uk)

All descriptions, plans or references to condition are given in good faith only. Whilst every endeavour is made to ensure accuracy, please check with us on any points of especial importance to you.