

10 Moy Road, Taffs Well

£280,000 Freehold

THREE BEDROOM MID TERRACED PROPERTY SPACIOUS LIVING ROOM AND SEPARATE KITCHEN/DINER REAR GARDEN AND LARGE GARAGE A well presented three bedroom terraced property in the sought after location of Taffs Well. Entrance hallway leading to a spacious Lounge with feature fireplace, a spacious kitchen/dining room. To the first floor; principal bedroom, a second double bedroom, family bathroom and third bedroom. Enclosed rear garden and large garage with rear lane access. EPC Rating: TBC

Council Tax band: D

Tenure: Freehold

ENTRANCE HALLWAY

Approached via upvc paneled door with two obscured glass windows leading to central hallway.

LOUNGE

22' 11" x 11' 2" (6.98m x 3.40m)

A lovely sized lounge with double glazed windows to front and back. Original feature fireplace. Door to under stair storage. Original floorboards. Two radiators.

KITCHEN/DINER

20' 2" x 9' 3" (6.15m x 2.81m)

A good sized kitchen/diner appointed along one side. Inset belfast sink. Bronze mixer tap. Space for washing machine and range cooker. Tiled splash back. Window overhead the sink overlooking the side. Double French doors. Extra window to side. Tiled flooring. Radiator.

FIRST FLOOR LANDING

Leading from easy rise staircase to central landing area. Doors to all rooms. Built in storage. Loft access.

BEDROOM ONE

14' 3" x 10' 10" (4.34m x 3.31m)

A good sized primary bedroom with two windows overlooking the front entrance approach. Wooden floorboards. Radiator.

BEDROOM TWO

11' 4" x 8' 4" (3.46m x 2.53m)

Window overlooking the rear garden. Original wooden floorboards. Radiator.

BEDROOM THREE

8' 4" x 10' 1" (2.55m x 3.07m)

Overlooking the rear garden. Radiator.

FAMILY BATHROOM

9' 3" x 5' 7" (2.83m x 1.69m)

A white suite comprising of low level wc, pedestal wash hand basin with bronze taps. White shower tray with half height panels, glass partition, bronze twin overhead shower head. Full wall tiling. Tiled flooring. Heated towel rail. Window to side.

ENTRANCE HALLWAY

Approached via upvc paneled door with two obscured glass windows leading to central hallway.

LOUNGE

22' 11" x 11' 2" (6.98m x 3.40m)

A lovely sized lounge with double glazed windows to front and back. Original feature fireplace. Door to under stair storage. Original floorboards. Two radiators.

KITCHEN/DINER

20' 2" x 9' 3" (6.15m x 2.81m)

A good sized kitchen/diner appointed along one side. Inset belfast sink. Bronze mixer tap. Space for washing machine and range cooker. Tiled splash back. Window

BEDROOM ONE

14' 3" x 10' 10" (4.34m x 3.31m)

A good sized primary bedroom with two windows overlooking the front entrance approach. Wooden floorboards. Radiator.

BEDROOM TWO

11' 4" x 8' 4" (3.46m x 2.53m)

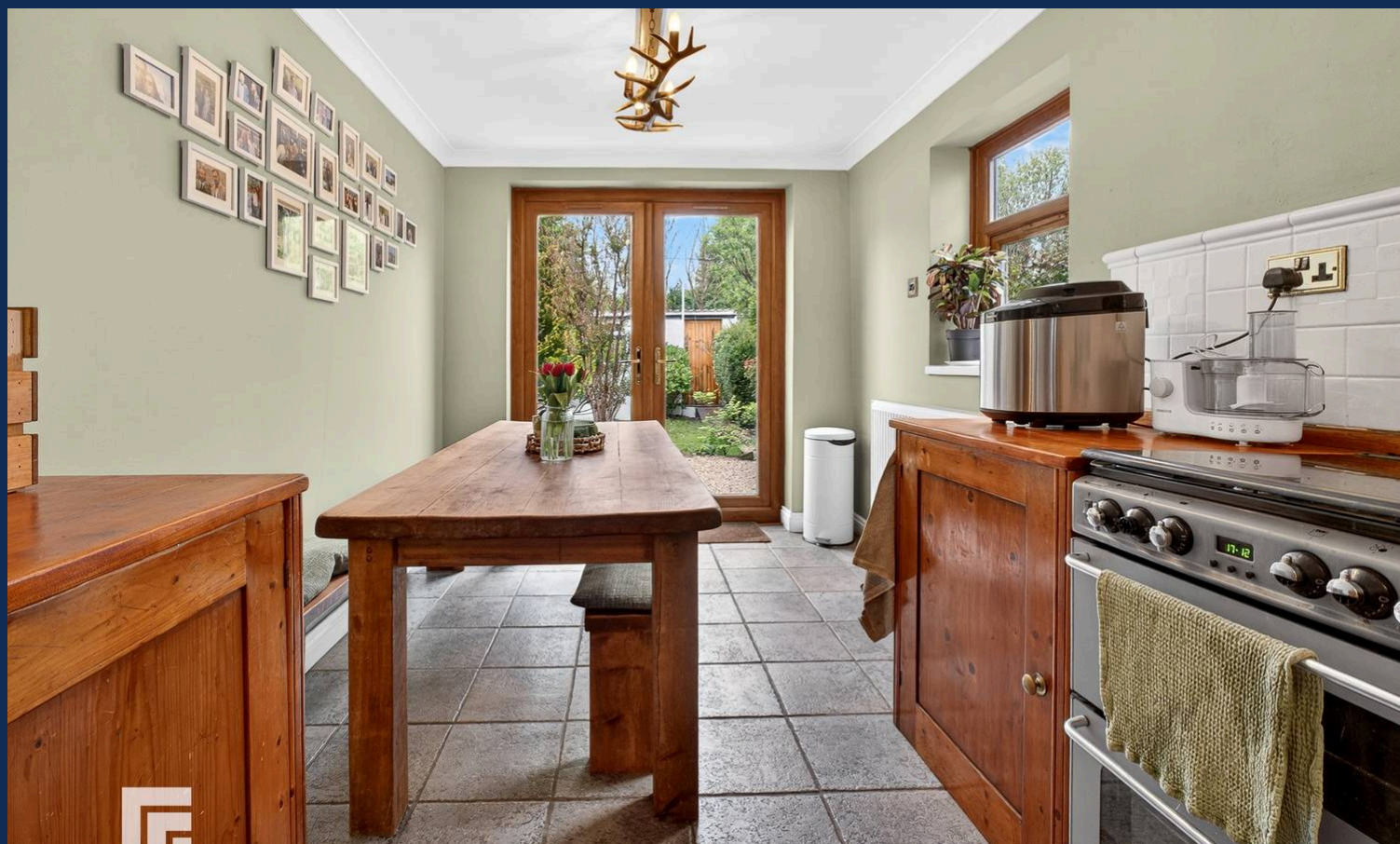
Window overlooking the rear garden. Original wooden floorboards. Radiator.

BEDROOM THREE

8' 4" x 10' 1" (2.55m x 3.07m)

Overlooking the rear garden. Radiator.

FAMILY BATHROOM





REAR GARDEN

Pebbled area with pebble path leading to garage.
Lawned area with mature shrubbery and trees. Outside tap.

FRONT GARDEN

Front garden Stone path leading to front door. Are of pebbles with shrubs enclosed via half brick, half metal fence.

GARAGE

Single Garage

A good sized garage currently used as a gym. Power and lighting. Electric roller shutter door. Window to rear garden. 7.40 x 3.95

