



14 Ford Lane, Didsbury
Manchester

£800,000

**GASCOIGNE
HALMAN**

THE AREA'S LEADING ESTATE AGENCY



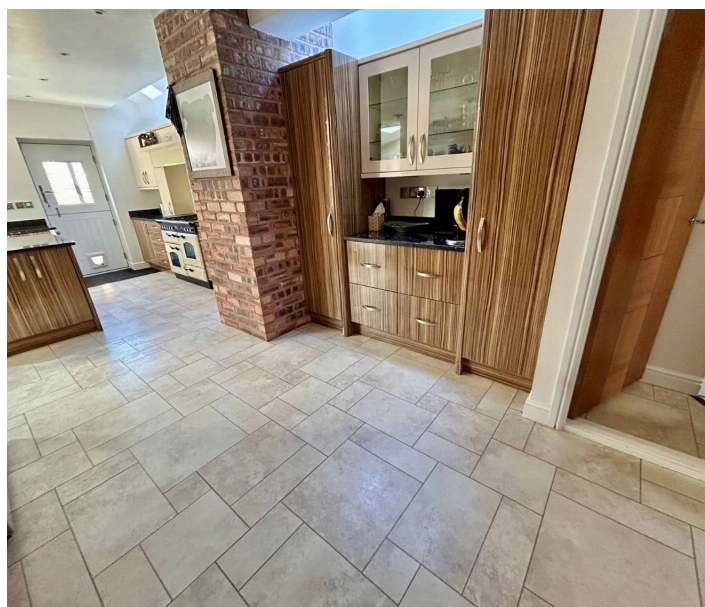
14 Ford Lane

Didsbury, Manchester

Council Tax band: D

Tenure: Freehold

- A Stunning and Spectacular Bay Fronted Semi Detached Property
- Located on a Larger than Average Plot
- Measuring a Highly Impressive 1774 SQ FT
- Three Good Sized Reception Rooms and a Modern Fitted Kitchen
- Three Generous Double Bedrooms and a Dressing Room
- Stylish Three Piece En-Suite Shower Room and a Contemporary Four Piece Bathroom Suite
- Garage, Utility Room and Office
- Gated Off Road Parking for Multiple Vehicles, Rear Landscaped Westerly Facing Garden
- Located Only Moments from Didsbury Village and Scenic Walks

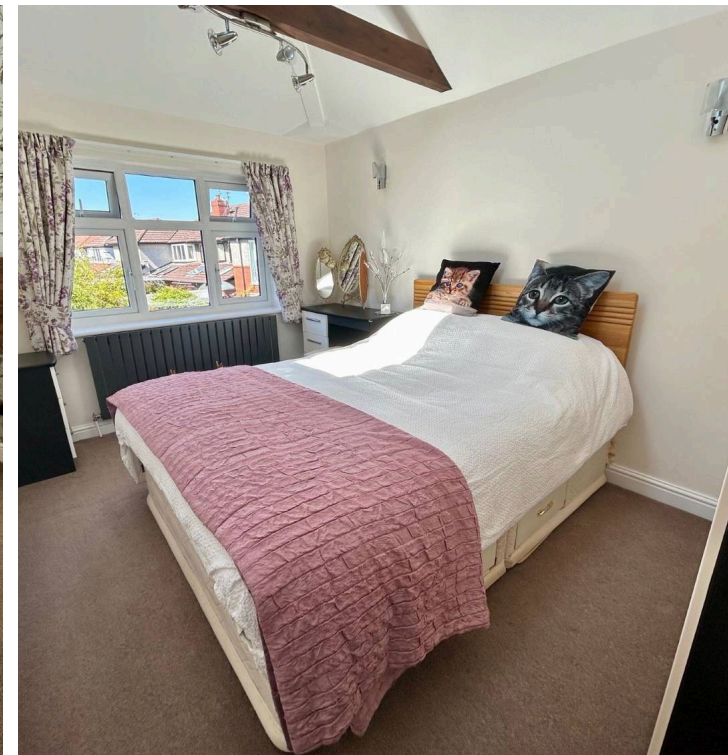
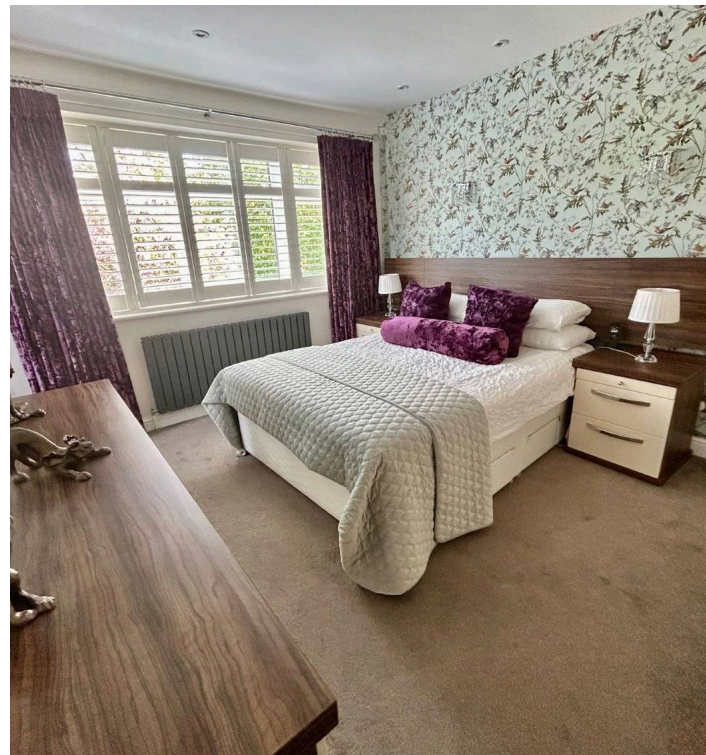


14 Ford Lane

Didsbury, Manchester

This stunning and spectacular bay fronted semi-detached house offers an exceptional opportunity to acquire a beautifully presented family home, measuring a highly impressive 1,774 square feet and situated on a larger than average plot. Located only moments from the vibrant heart of Didsbury Village and scenic walks, this property combines generous proportions with contemporary styling throughout. Upon entering, you are greeted by a spacious entrance hall that leads to a bay fronted dining room complete with Plantation shutters, To the rear of the property you are met by the modern fitted kitchen is thoughtfully designed, providing ample storage and a central island. A family/living room with excellent views through sliding doors over the garden, feature fireplace and attractive sky light.

Upstairs, the accommodation comprises three generous double bedrooms and a versatile dressing room, all finished to a high standard. The principal bedroom benefits from a stylish three piece en-suite shower room, while the remaining bedrooms are served by a contemporary four piece bathroom suite, featuring both a bath and a separate shower enclosure. Additional features include a practical utility room, a dedicated office ideal for home working with further plantation shutters and tree lined views, and an integral garage that offers further storage.





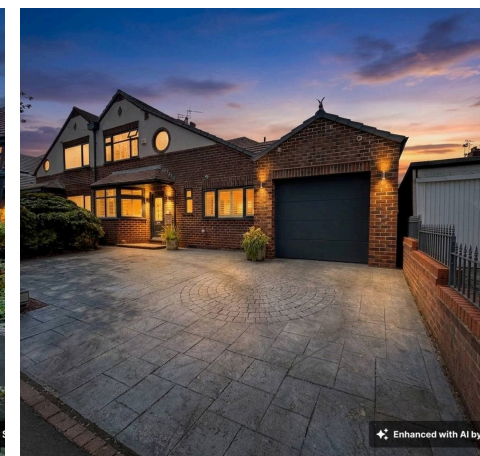
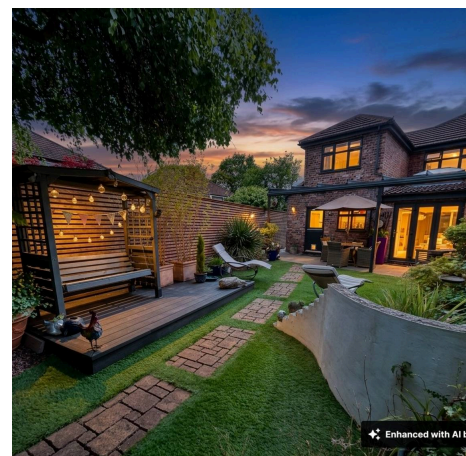
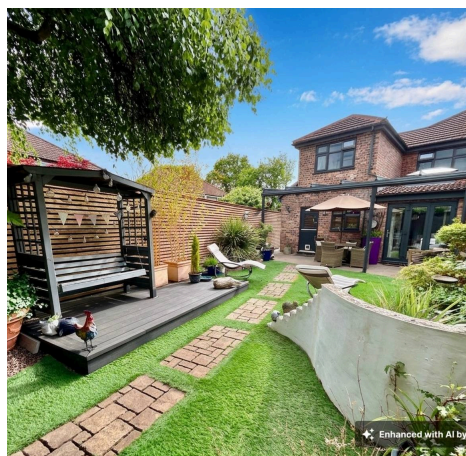
14 Ford Lane

Didsbury, Manchester

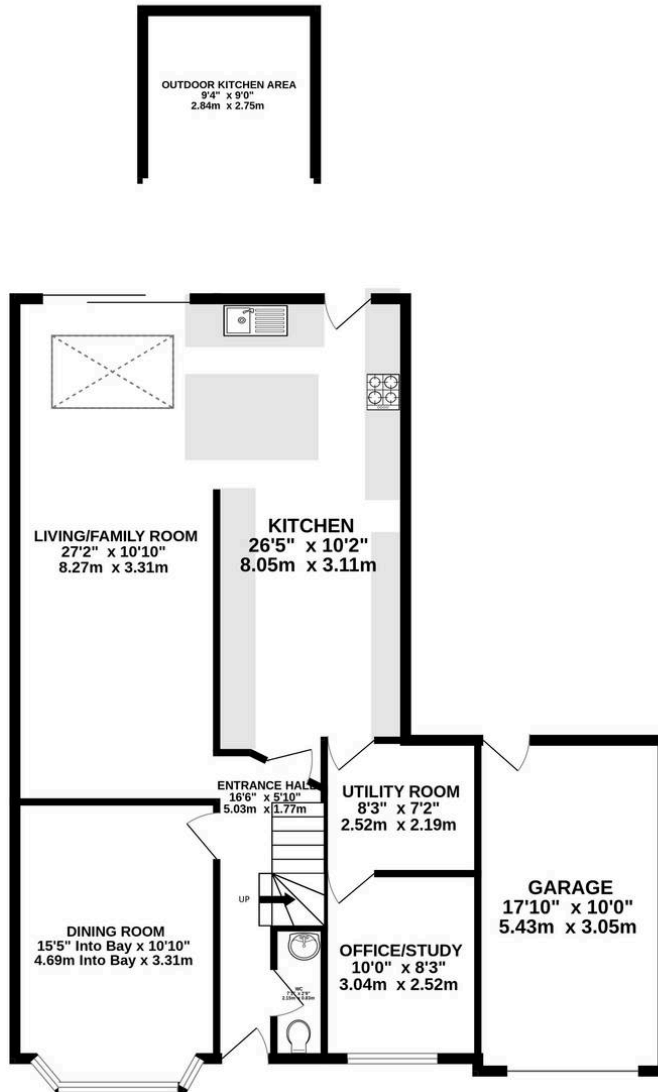
Further enhancing the appeal are the gated off road parking facilities, which can accommodate multiple vehicles, providing both convenience and security.

This impressive home seamlessly blends period charm with modern touches, making it ideal for families seeking space, comfort, and a prime location close to excellent amenities, reputable schools, and transport links. The rear Westerly facing, private garden is complimented by artificial lawn, patio area covered by a canopy and an newly installed outdoor kitchen.

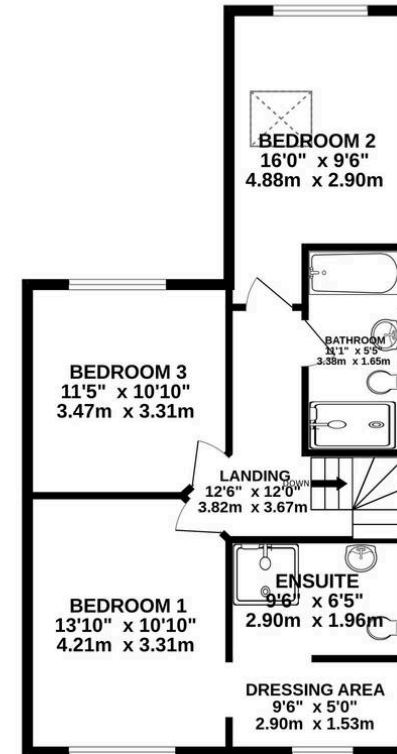
Didsbury Village is a vibrant hub, offering a wide range of restaurants, bars and shops. Manchester City Centre is approx. five miles away and is readily accessible via frequent bus services along Kingsway (A34) or Wilmslow Road (A5145). The Trafford Shopping centre is a 15 minute drive away, Manchester Airport is approx. 12 minutes away, and the property is well-placed for access to the national motorway and rail networks. Local schooling is excellent. Didsbury has several primary schools including Beaver Rd Primary School (Ofsted rated Outstanding). The property is close to the bus routes to the City Centre Independent Schools and within the catchment area of Parrs Wood High School.



GROUND FLOOR
1204 sq.ft. (111.8 sq.m.) approx.



1ST FLOOR
654 sq.ft. (60.8 sq.m.) approx.



TOTAL FLOOR AREA : 1774sq.ft. (164.8 sq.m.) approx.
Measurements are approximate. Not to scale. Illustrative purposes only
Made with Metropix ©2026



THE AREA'S LEADING ESTATE AGENCY