



38 Park Drive, HARROGATE

Harrogate

Guide Price £995,000



MYRINGS



38 Park Drive

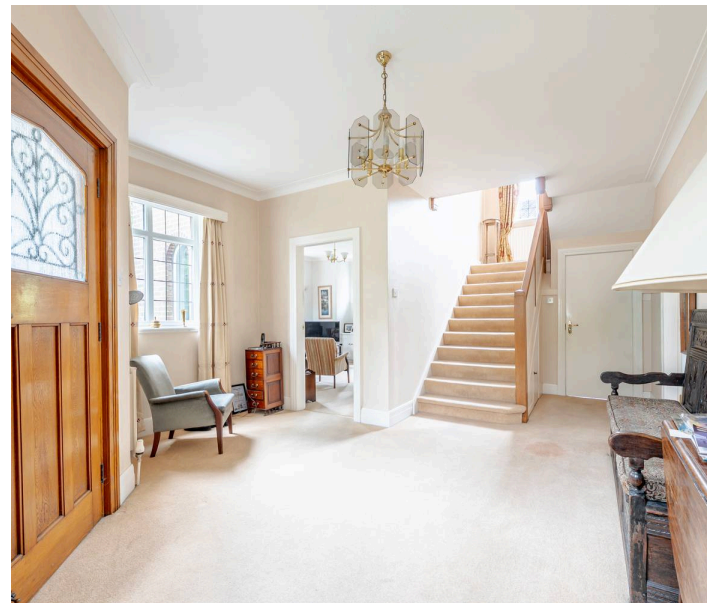
HARROGATE, Harrogate

A highly desirable Moch Tudor style 4 bedroom detached residence, occupying one of Harrogate's most sought-after addresses on the sought after Oval looking towards the central gardens. The property offers generous and versatile accommodation extending to four reception rooms, together with a double width side driveway & double garage standing in mature deeply stocked gardens.

Council Tax band: G

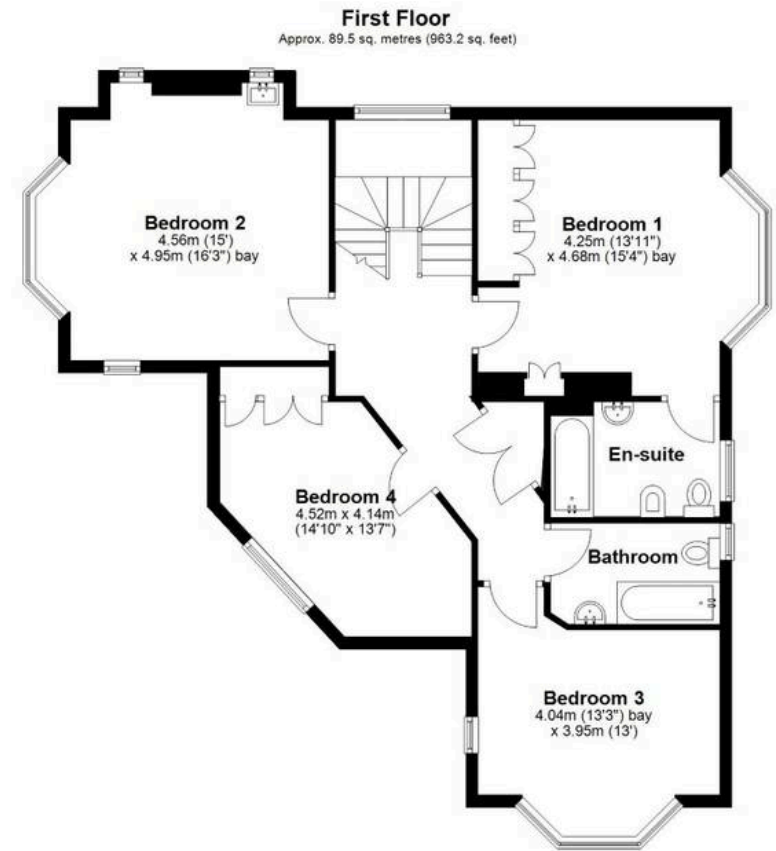
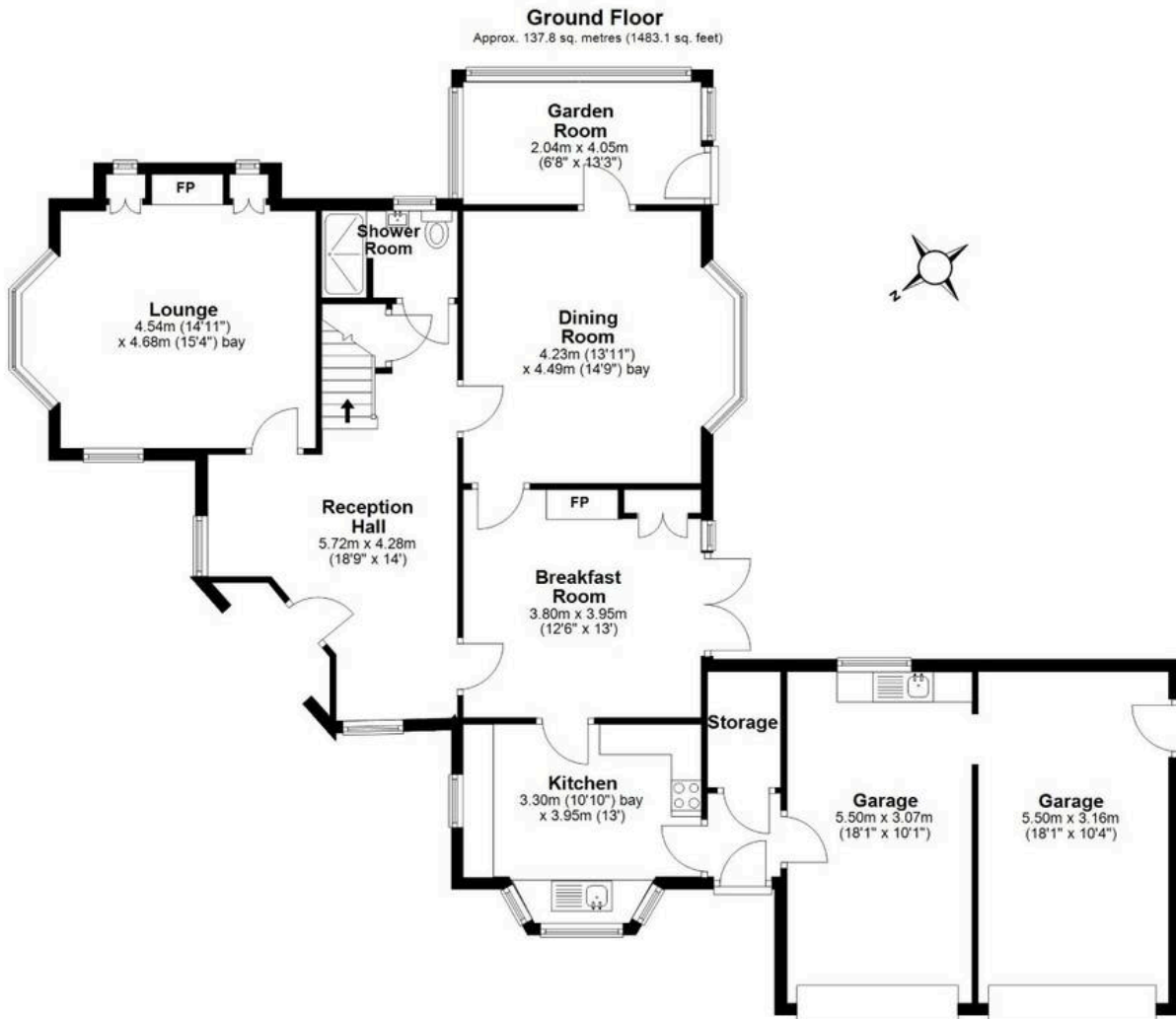
Tenure: Freehold

- FOUR BEDROOM DETACHED FAMILY HOME
- PRIME SOUTH SIDE HARROGATE LOCATION
- FOUR SPACIOUS RECEPTION ROOMS
- PRIVATE ADJOINING DOUBLE GARAGE
- DRIVEWAY PARKING
- GENEROUS FRONT AND REAR GARDENS
- GROUND FLOOR SHOWER ROOM
- CHARACTER FEATURES INCLUDING MULTIPLE BAY WINDOWS
- CONSERVATORY / GARDEN ROOM WITH GARDEN ACCESS
- SOUGHT-AFTER RESIDENTIAL ADDRESS



MYRINGS





Total area: approx. 227.3 sq. metres (2446.3 sq. feet)

All measurements are approximate and display purposes only.
Plan produced using PlanUp.





Myrings Estate Agents

Myrings Estate Agents Ltd, 10 Princes Square - HG1 1LX

01423

566400

▪ enquiries@myringsestateagents.com ▪ <http://myringsestateagents.com/>

