



Costons Lane, Greenford
£395,000

SAB
ESTATES



Costons Lane

Greenford

- Purpose Built 3-Bed Maisonette
- Chain Free
- Ready to Move Condition
- Long Lease 166 Years Remaining
- Potential to Extend STPP
- Private Rear Garden
- Free Street Parking
- Underfloor Heating in Bathroom
- Just Off Greenford Broadway
- Perfect Starter Home

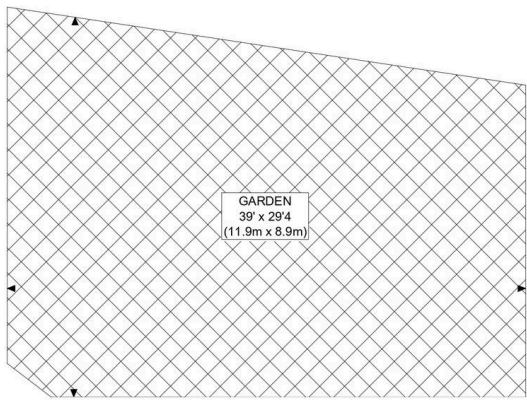
Council Tax band: C

Tenure: Leasehold

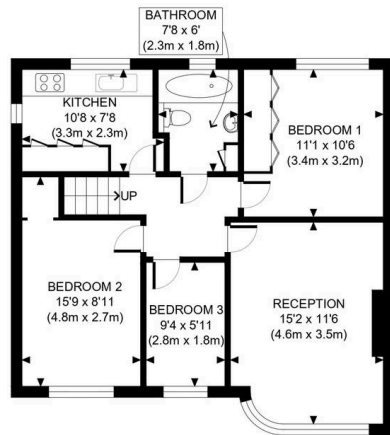
EPC Energy Efficiency Rating: D

EPC Environmental Impact Rating: D





GROUND FLOOR
GROSS INTERNAL
FLOOR AREA 24 SQ FT



FIRST FLOOR
GROSS INTERNAL
FLOOR AREA 674 SQ FT



APPROX. GROSS INTERNAL FLOOR AREA: 698 SQ FT/ 65 SQM



This plan is for illustrative purposes only and should be used as such by any prospective client. Whilst every attempt has been made to ensure the accuracy of the Floor Plan contained here, measurements of the doors, windows, rooms and any other items are approximate and no responsibility is taken for any errors, omissions, or misstatement. The services, systems and appliances shown have not been tested and no guarantee as to the operability or efficiency can be given.



SAB Estates

236-238 Ruislip Road, Greenford - UB6 9RS

020 8575 2929 • info@sabestates.com • www.sabestates.com/