



3 Laurie Lane, ROYSTON

Royston

Guide Price £1,500 pcm





3 Laurie Lane

ROYSTON, Royston

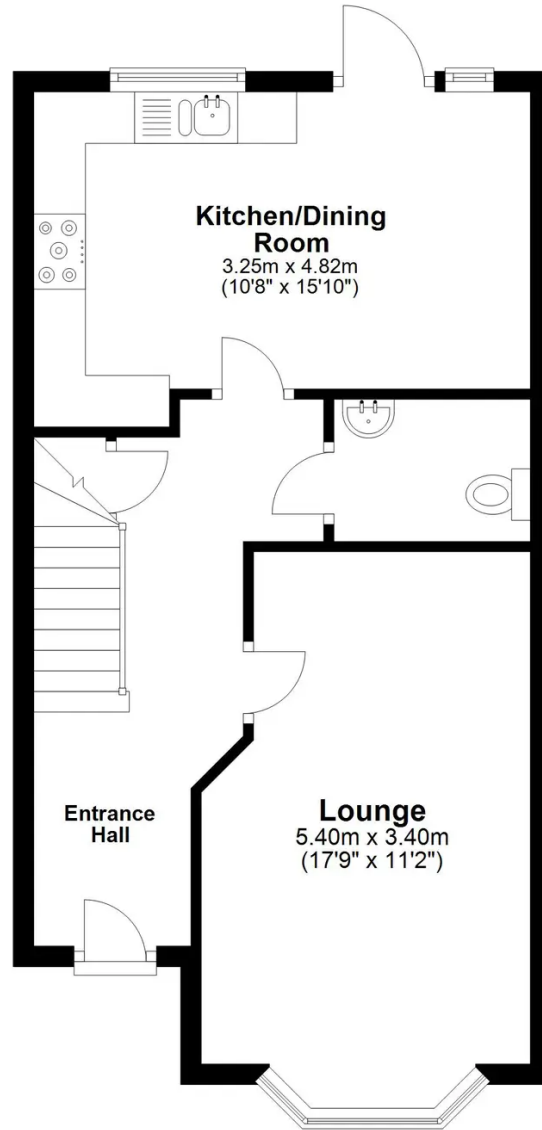
LET AGREED PRIOR TO FULL MARKETING Ensum Brown are delighted to have already let this well presented modern semi detached home that benefits from a larger than average rear garden. Accommodation includes a lounge, kitchen/dining room, cloakroom, 3 bedrooms, en-suite & bathroom.

- LET AGREED PRIOR TO FULL MARKETING
- Modern Semi Detached Home
- Highly Sought After Development
- Generous Garden
- Lounge
- Kitchen/Dining Room
- Cloakroom
- En-Suite & Family Bathroom
- Driveway Parking For 2/3 Cars



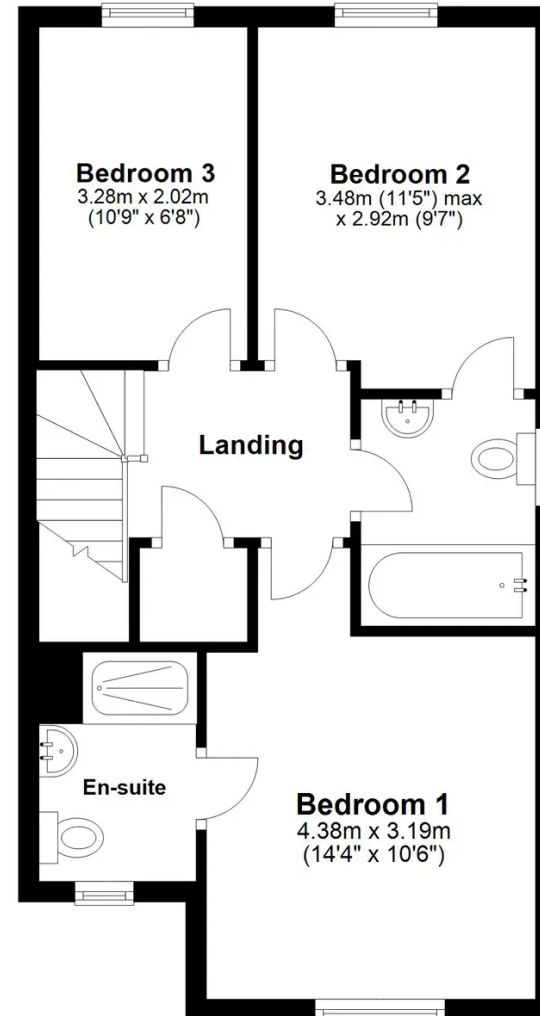
Ground Floor

Approx. 43.9 sq. metres (472.0 sq. feet)



First Floor

Approx. 44.9 sq. metres (482.9 sq. feet)



Total area: approx. 88.7 sq. metres (955.0 sq. feet)

Floor Plan measurements are approximate and are for illustrative purposes only.