



35 Linton Rise, Nottingham - NG3 7DB

Guide Price **£170,000**



35 Linton Rise

Nottingham, Nottingham

Stylishly presented mid-terrace home! 2 beds, bright lounge, modern kitchen & bathroom plus a driveway with EV charging point. Ideal for first-time buyers or commuters with nearby buses to the City!

Council Tax band: A

Tenure: Freehold

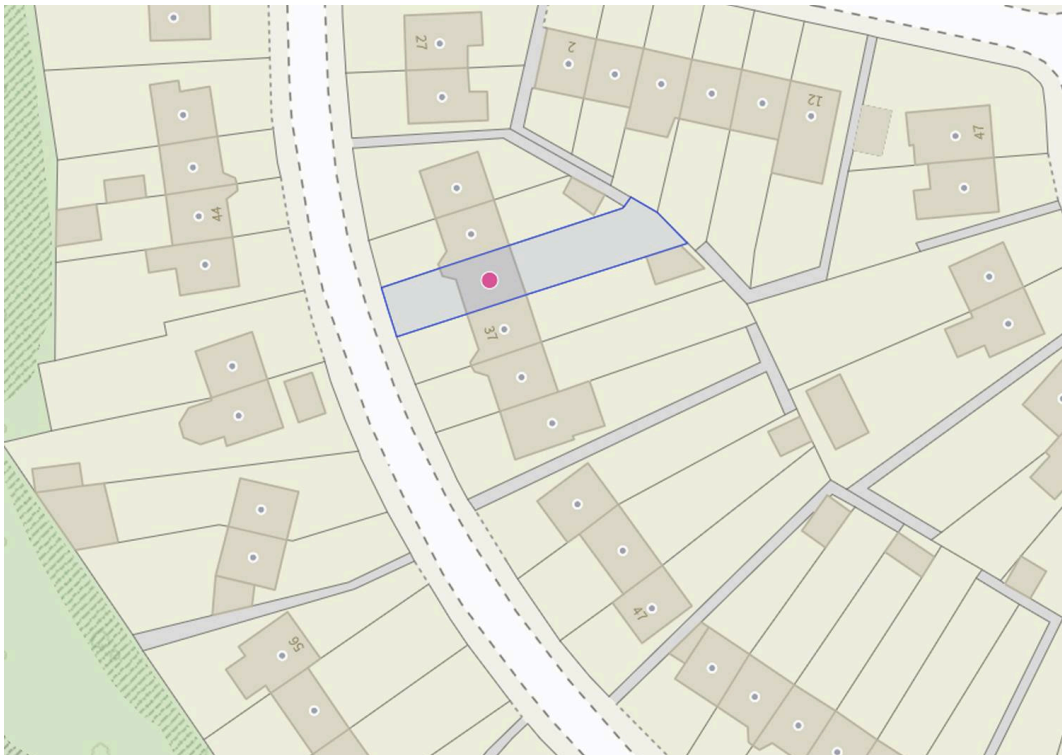
EPC Energy Efficiency Rating: D

EPC Environmental Impact Rating: D

- Stylish mid-terrace house
- Widely improved under the current ownership
- Close to local amenities, schools and public transport links to Nottingham City Centre
- Ideal for first-time buyers and commuting professionals
- Bright lounge with large front-facing window, wood finish flooring & neutral decor
- Modern high-gloss kitchen with Zanussi integrated appliances and an understairs storage/utility area
- Two well-presented double bedrooms (both with built-in storage cupboards)
- Contemporary bathroom with a three-piece suite
- Rear garden with lawn, decorative stone and a timber shed
- Driveway parking with an EV charging point









Floor 0



Floor 1



Approximate total area⁽¹⁾
57.7 m²
621 ft²

Reduced headroom
0.4 m²
4 ft²

(1) Excluding balconies and terraces

Reduced headroom
..... Below 1.5 m/5 ft

Calculations reference the RICS IPMS 3C standard. Measurements are approximate and not to scale. This floor plan is intended for illustration only.

GIRAFFE360



David James Estate Agents

376 Carlton Hill, Carlton - NG4 1JA

0115 987 8957 • carlton@david-james.com • www.david-james.com

These particulars are produced in good faith and are set out as a general guide only. Measurements are approximate and floor plans are for illustrative purposes only. Services have not been tested. We have established professional relationships with third-party suppliers for the provision of services to Clients, details of which can be found on the property listing page on our website.