



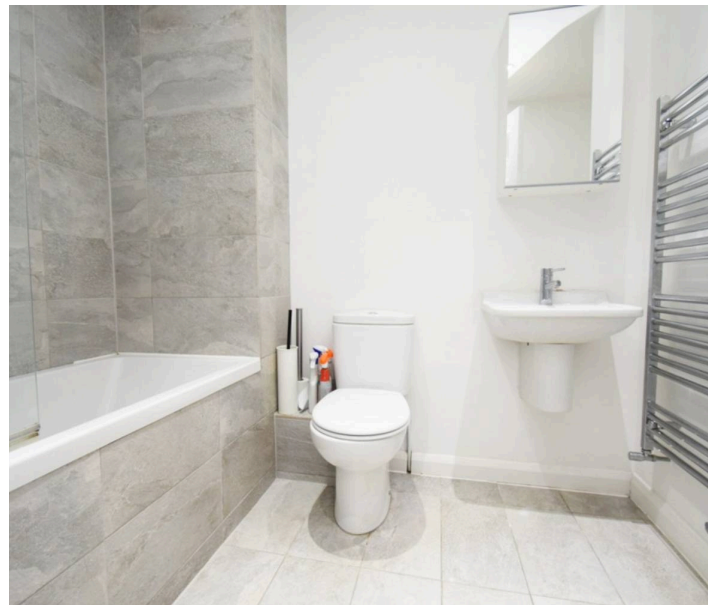
34 Bell Street, Princes Risborough - HP27 0AD

In Excess of £300,000

 **TIM RUSS**  
& Company



- Town centre location
- Two bedrooms
- Well presented
- Spacious accommodation
- Courtyard garden



Presenting a charming two double bed cottage in Princes Risborough. Conveniently close to town centre and amenities. Features modern kitchen, courtyard garden, and stylish family bathroom. Chain free.

This well presented two double bedroom cottage is ideally located in the heart of Princes Risborough, just a short stroll from the town centre and its array of shops, cafes, and transport links. Thoughtfully maintained throughout, the property offers a comfortable and inviting living space with a modern kitchen diner that opens onto a charming courtyard garden, perfect for outdoor dining and relaxing. The accommodation includes two double bedrooms and a stylish family bathroom. The home is also chain free.

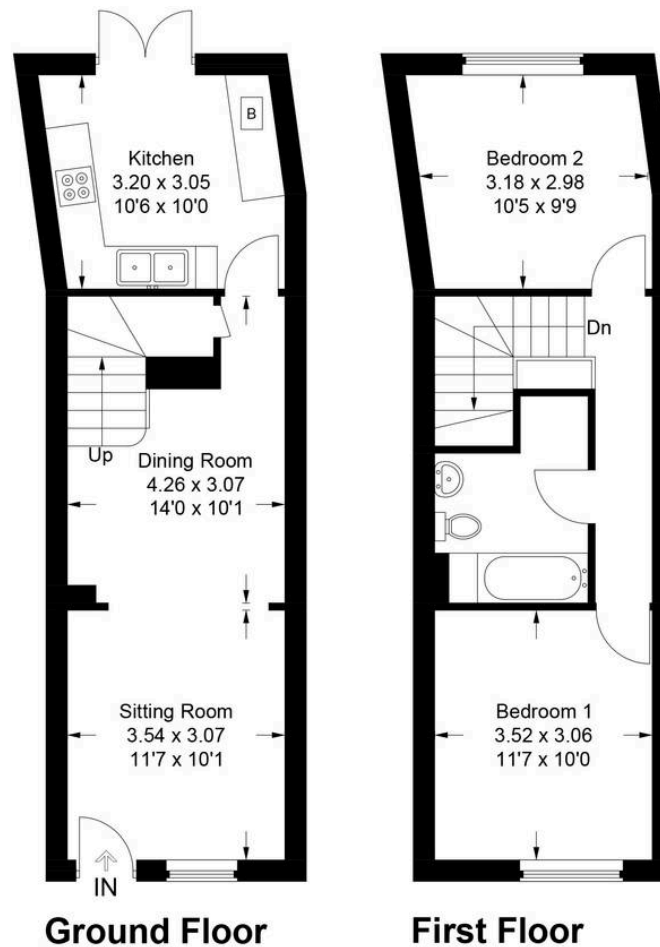
Council Tax band: D

Tenure: Freehold

EPC Energy Efficiency Rating: C

EPC Environmental Impact Rating: C





**Ground Floor**

**First Floor**

**34 Bell Street**

Approximate Gross Internal Area  
 Ground Floor = 33.0 sq m / 355 sq ft  
 First Floor = 32.0 sq m / 345 sq ft  
 Total = 65.0 sq m / 700 sq ft

This plan is for layout guidance only. Not drawn to scale unless stated. Windows and door openings are approximate. Whilst every care is taken in the preparation of this plan, please check all dimensions, shapes and compass bearings before making any decisions reliant upon them.

© CJ Property Marketing Ltd Produced for Tim Russ & Company



**Tim Russ and Company**

Tim Russ Ltd, 1 High Street - HP27 0AE

01844 275522 • p.risborough@timruss.co.uk • timruss.co.uk/

By law we must verify every seller and buyer for anti-money laundering purposes.

Checks are carried out by our partners at Lifetime Legal for a non-refundable £65 (incl. VAT) fee, paid directly to them.

For more information please visit our website.



Particulars described on our website and in marketing materials are for indicative purposes only; their complete accuracy cannot be guaranteed. Details such as boundary lines, rights of way, or property condition should not be treated as fact. Interested parties are advised to consult their own surveyor, solicitor, or other professional before committing to any expenditure or legal obligations.