



27 Mason Street, Sutton-In-Ashfield - NG17 4HQ

Guide Price £110,000



27 Mason Street

Sutton-In-Ashfield, Sutton-In-Ashfield

INVESTORS ONLY! 3 bed terraced with tenants in-situ to offer a ready-made investment opportunity! 2 reception rooms, kitchen, bathroom and generous garden. Close to amenities and King's Mill Hospital!

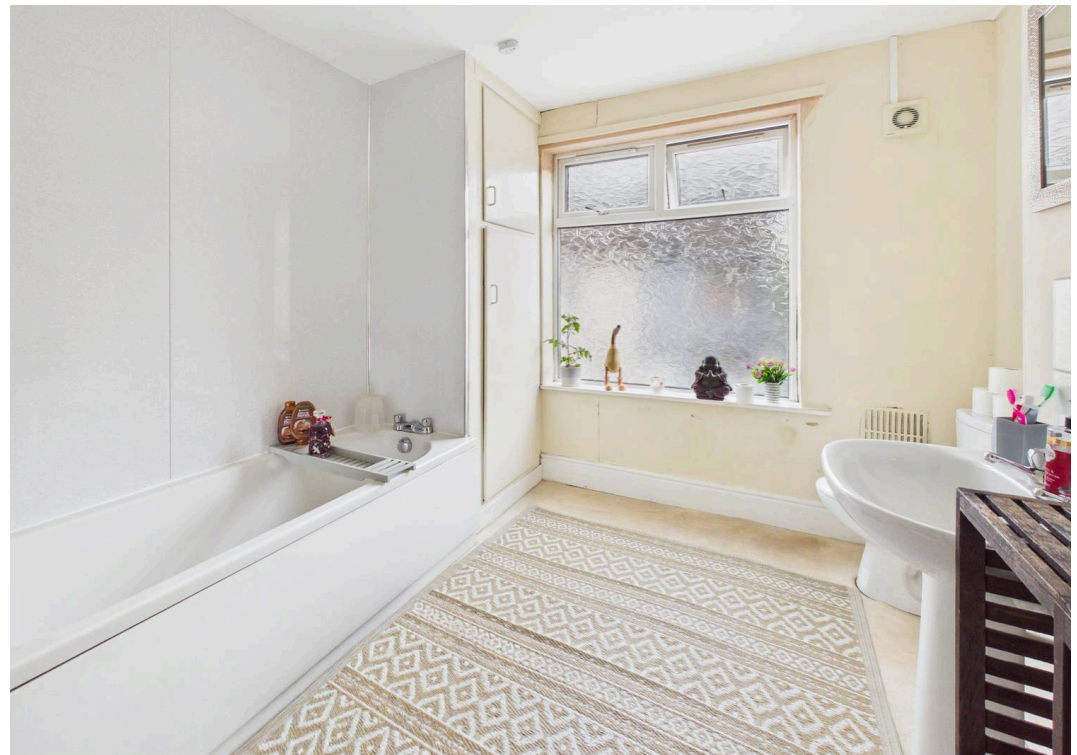
Council Tax band: A

Tenure: Freehold

EPC Energy Efficiency Rating: D

EPC Environmental Impact Rating: E

- Mid-terrace family home
- Available to investors only (longstanding tenants in-situ)
- Offered to the market with no upward chain
- Within easy reach of Sutton-in-Ashfield's excellent nearby amenities, transport links and King's Mill Hospital
- Two versatile reception rooms (lounge and separate dining/sitting room)
- Fitted kitchen with space for a variety of freestanding appliances
- Three bedrooms set over the first and second floors
- First floor family bathroom with a three-piece modern white suite
- Generous lawned garden
- Useful outbuilding storage to the rear





Floor 0



Floor 1



Floor 2



Approximate total area⁽¹⁾

87.1 m²
938 ft²

Reduced headroom

2.3 m²
25 ft²

(1) Excluding balconies and terraces

Reduced headroom

----- Below 1.5 m/5 ft

Calculations reference the RICS IPMS 3C standard. Measurements are approximate and not to scale. This floor plan is intended for illustration only.

GIRAFFE360



David James Estate Agents

43 Forest Street, Sutton-in-Ashfield - NG17 1DA

01623 554084 • sutton@david-james.com • www.david-james.com

These particulars are produced in good faith and are set out as a general guide only. Measurements are approximate and floor plans are for illustrative purposes only. Services have not been tested. We have established professional relationships with third-party suppliers for the provision of services to Clients, details of which can be found on the property listing page on our website.