



15 Rolling Mill, Maresfield, TN22 2BF
Uckfield

Guide Price **£350,000 – £375,000**

**MANSELL
McTAGGART**
— Trusted since 1947 —

15 Rolling Mill

Maresfield, Uckfield

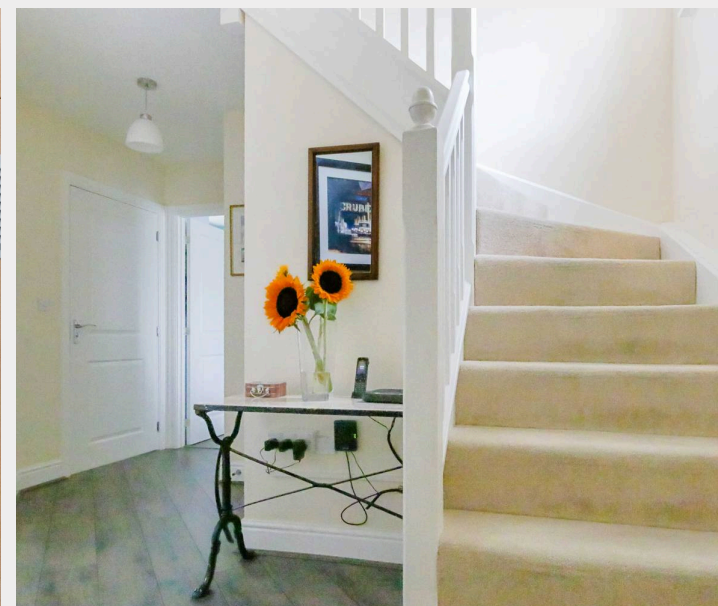
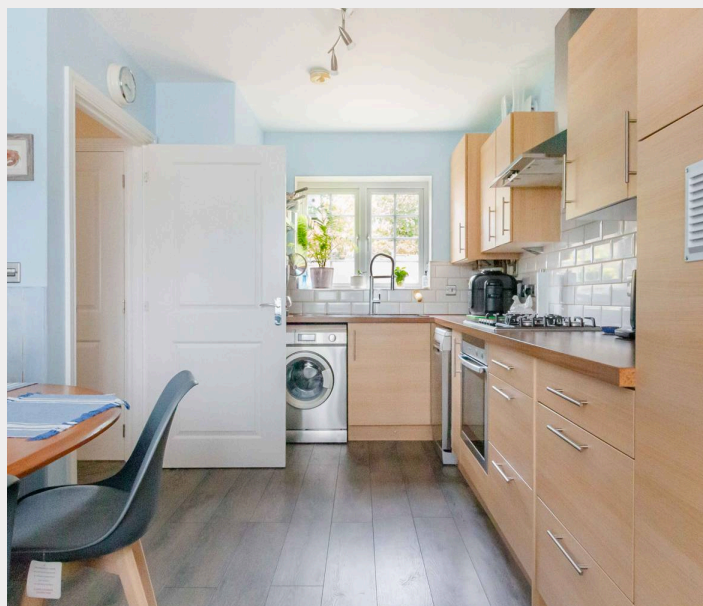
A deceptively spacious and beautifully improved two double bedroom two bathroom semi-detached modern family home with a driveway and detached single garage occupying a generous corner plot with a landscaped rear garden.

The property is entered via a central hallway with a cloakroom found nearby, there is a double aspect sitting room with a set for French doors opening to the rear garden. The kitchen/breakfast room also enjoys a double aspect and has been fitted with a range of matching units to one side of the room with a built-in gas hob and oven.

Council Tax band: C

Tenure: Freehold

- A deceptively spacious and beautifully improved two double bedroom semi-detached family home
- Occupying a generous corner plot with a beautifully landscaped rear garden
- Ground floor cloakroom
- Driveway and detached garage
- Double aspect sitting room with French doors opening to rear garden
- Kitchen/dining room
- Principal bedroom with en-suite shower room
- Walking distance of the public Inn, general store and further amenities





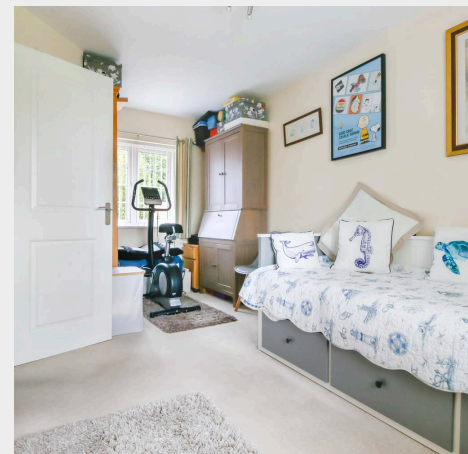
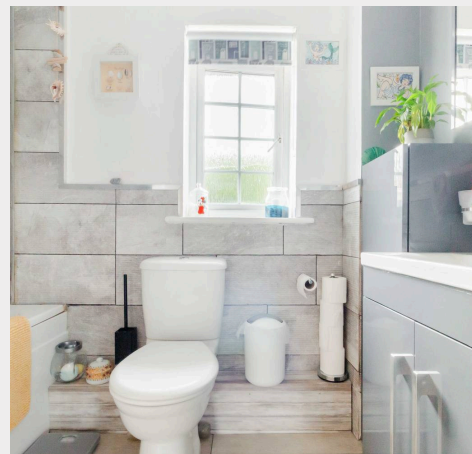
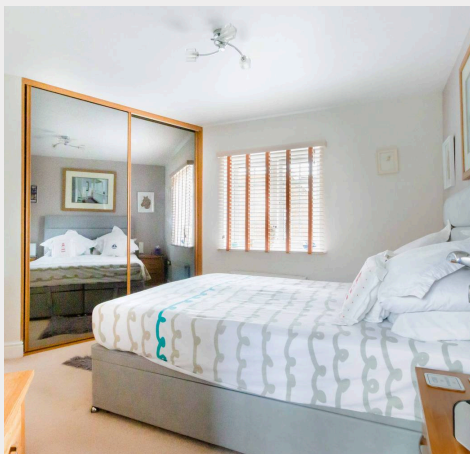
15 Rolling Mill

Maresfield, Uckfield

The first floor provides a spacious landing, a principal bedroom with built-in wardrobe and an ensuite shower room. There is a second double bedroom with a built-in wardrobe and a family bathroom with thermostatically controlled shower and glass screen comprising an enclosed bath.

Outside, the front of the property is approached via a paved path, the driveway lies to the one side of the property and in turn leads to the detached garage/workshop with several power points and lighting. The rear garden has been beautifully landscaped with a deep flagstone seating terrace, the whole enclosed by close board fencing with a shed to one side with outside power sockets to the side and outside tap to the rear and a personal door giving access to the garage.

This stunning home has been beautifully improved by the current owners for the years and boast two beautifully tiled bathroom suites and a large, landscaped rear garden. The property was constructed by Charles Church in 2011, as a V shape which affords a great sense of space with the living accommodation on the ground floor focusing on the rear garden.



Maresfield, East Sussex, TN22

Approximate Gross Internal Area = 815 sq ft / 75.7 sq m
Outbuilding = 182 sq ft / 16.9 sq m
Total = 997 sq ft / 92.6 sq m
(Excluding Store)

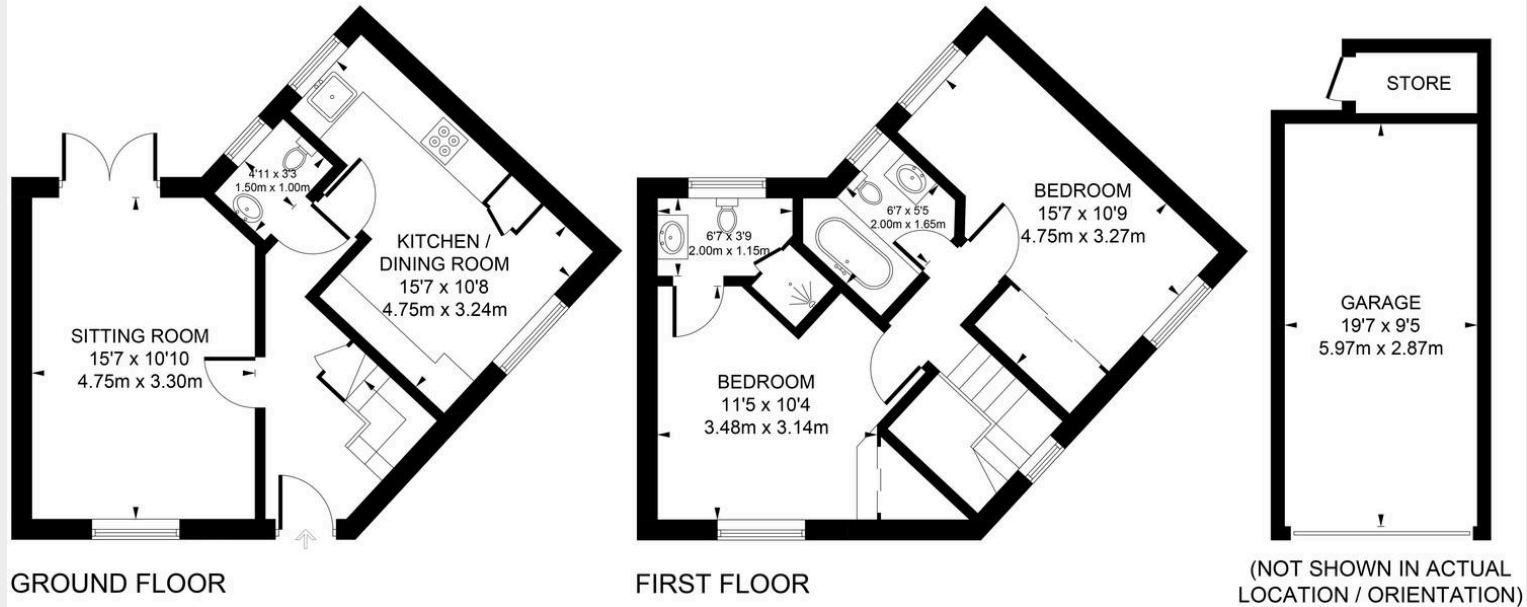


Illustration for identification purposes only, measurements are approximate, not to scale. www.enviromapltd.co.uk (ID1225045)

Mansell McTaggart Uckfield

Mansell McTaggart, 204-206 High Street - TN22 1RD

01825 760770

uf@mansellmctaggart.co.uk

www.mansellmctaggart.co.uk/branch/uckfield

Consumer Protection from Unfair Trading Regulations 2008 We have not tested any apparatus, equipment, fixtures, fittings or services and so cannot verify that they are in working order or fit for purpose. You are advised to obtain verification from your solicitor or surveyor. References to the tenure of a property are based on information supplied by the seller. We have not had sight of the title documents and a buyer is advised to obtain verification from their solicitor. Items shown in photographs are not included unless specifically mentioned within the sales particulars, but may be available by separate negotiation.