

242 The Green, Ecclestone

PR7 5SU

£795 pcm





Well-presented two bedroom terrace in the village of Ecclestone, close to all local amenities and excellent schools. Available to let immediately.

The property is garden fronted and the front door leads into the entrance porch and into the reception hallway with its staircase to the first floor, from where both of the two reception rooms can be directly accessed. Both reception rooms are great sizes and have original brick built fireplaces.

To the rear is the kitchen comprising a range of wall and base units, ceramic sink and integrated electric hob and oven. There is space, plumbing and power for a fridge freezer, washing machine, dryer and dishwasher. From here the rear door leads to the walled rear yard with storage shed and plenty of space for table, chairs and a barbeque for summer's evenings.

The first floor comprises two well-proportioned double bedrooms with built in storage cupboards. The modern three piece family bathroom comprises wash hand basin, WC and separate shower enclosure.

- Two bedrooms
- Zero Deposit Scheme available
- Modern kitchen and bathroom
- Two reception rooms
- Low maintenance garden
- Available now



The property is available now and requires a deposit of £900 including holding deposit of £180. The Zero Deposit Scheme is also available.

Council Tax Band: B

EPC Rating: D

- Two bedrooms
- Zero Deposit Scheme available
- Modern kitchen and bathroom
- Two reception rooms
- Low maintenance garden
- Available now



Eccleston Branch
265 The Green, Eccleston, PR7 5TF
01257 451673

Coppull Branch
244 Spendmore Lane, Coppull, PR7 5DE
01257 794588

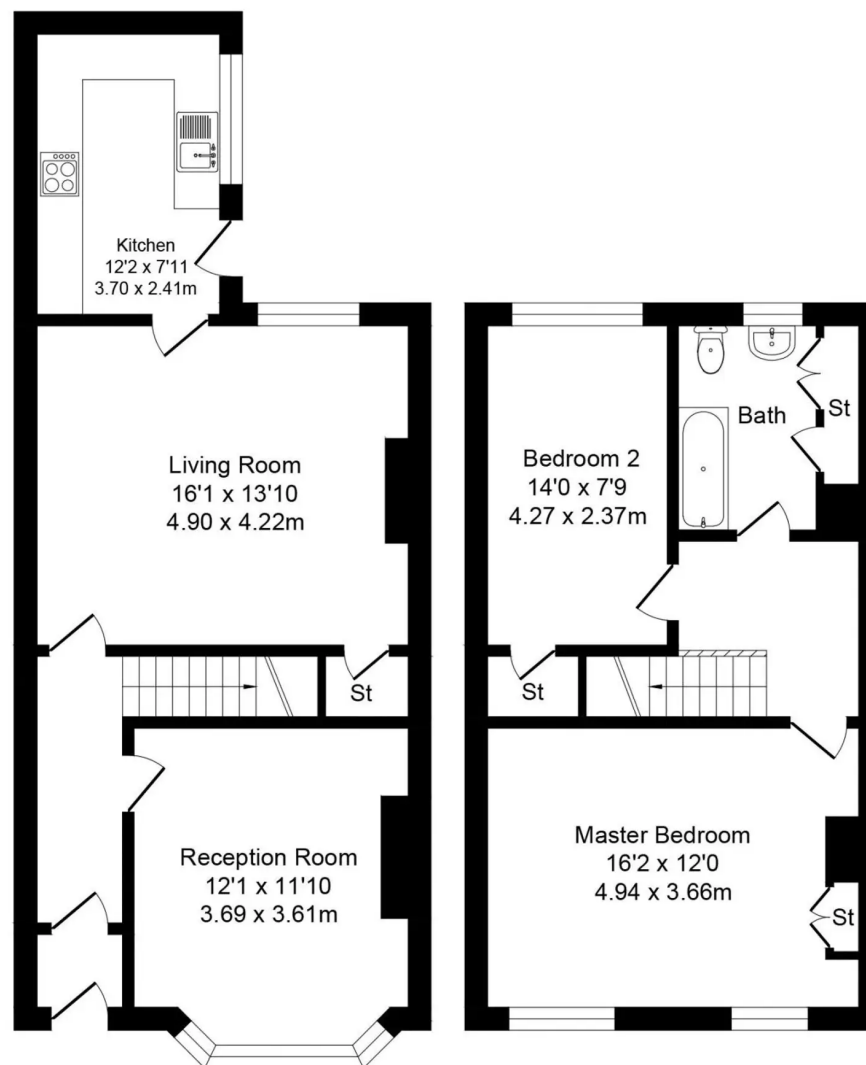
www.hometruthslancs.co.uk
office@hometruthslancs.co.uk



The Green

Total Approx. Floor Area 1061 Sq.ft. (98.6 Sq.M.)

Whilst every effort is made to accurately reproduce these floor plans, measurements are approximate, not to scale and for illustrative purposes only



Ground Floor

Approx. Floor
Area 587 Sq.Ft
(54.5 Sq.M.)

First Floor

Approx. Floor
Area 475 Sq.Ft
(44.1 Sq.M.)