



Radwell Court, N4 2GD
£580,000

**DAVID
ANDREW** | your
most
valuable
asset

Radwell Court, N4 2GD

Introducing a stunning, two-bedroom apartment set across the first floor of a modern RIBA-award-winning development with dual lift access and an internal residents-only courtyard. Offering plenty of light throughout, the space comprises; an entrance hallway inclusive of a built-in storage and utility room; an open-plan kitchen diner offering integrated appliances, leading to a dual aspect reception area with double doors opening out to the private terrace; two double bedrooms, a full bathroom suite off the main hallway. Radwell Court is minutes away to the beautiful Clissold Park & a five-minute walk from Stoke Newington's ever-popular Church Street, while Finsbury Park, Woodberry Wetlands & Highbury Fields are all close by. Excellent transport links are provided via Manor House, Finsbury Park & Arsenal stations & several local bus routes.

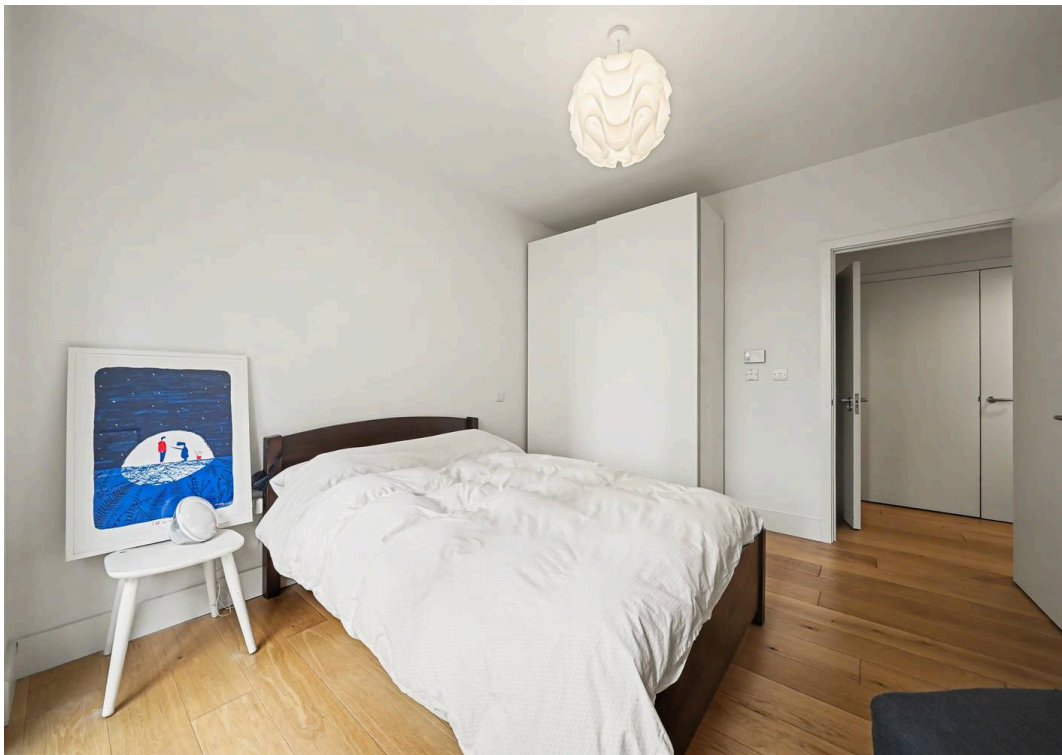
Tenure: Leasehold

EPC Energy Efficiency Rating: B

- Approx. 720 sq ft / 66.92 sq m
- Spacious open-plan reception room/kitchen
- Two double bedrooms
- Private balcony approx. 10'4" x 6'4" (3.14m x 1.93m)
- First floor
- Very well presented
- Amazing transport links
- Great location







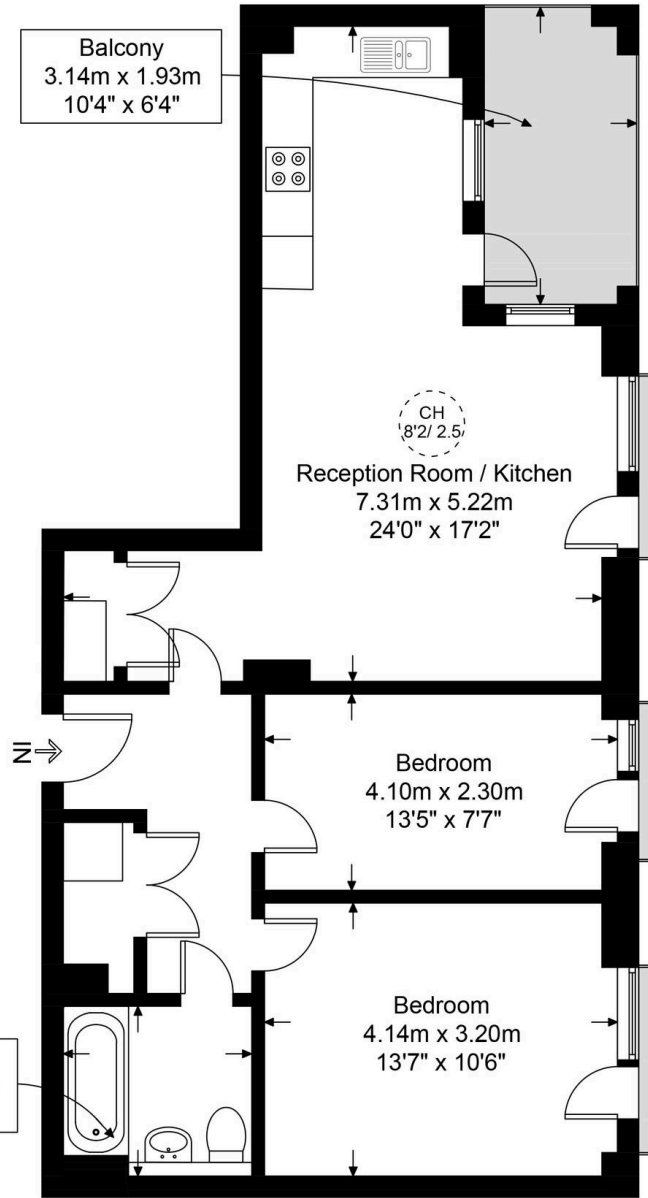


Radwell Court, N4

Approximate Gross Internal Area = 720 sq ft / 66.92 sq m

DAVID ANDREW

your most valuable asset



First Floor

scan to book a viewing



Certified Property Measurer

This plan is for layout guidance only. Not drawn to scale unless stated. Windows and door openings are approximate. Whilst every care is taken in the preparation of this plan, please check all dimensions, shapes and compass bearings before making any decisions reliant upon them.



has been exercised in the of these particulars, out the property must not be as representations of fact. Prospective applicants and rely upon their own d those of professional s. David Andrew Estates bility for any error contained

in these particulars.

Archway Office

671 Holloway Road
London, N19 5SE

T (0)20 7619 3750

Highbury Office

90 Highbury Park
London, N5 2XE

T (0)20 7354 9111

Finsbury Park Office

167 Stroud Green Road
London, N4 3PZ

T (0)20 7281 2000

Property Management Office

235 Blackstock Road
London, N5 2LL

T (0)20 7354 9222

