



Virtually Staged



Flat 9, Kingsley Court, 142 Kings Road

Offers Over £625,000



Flat 9

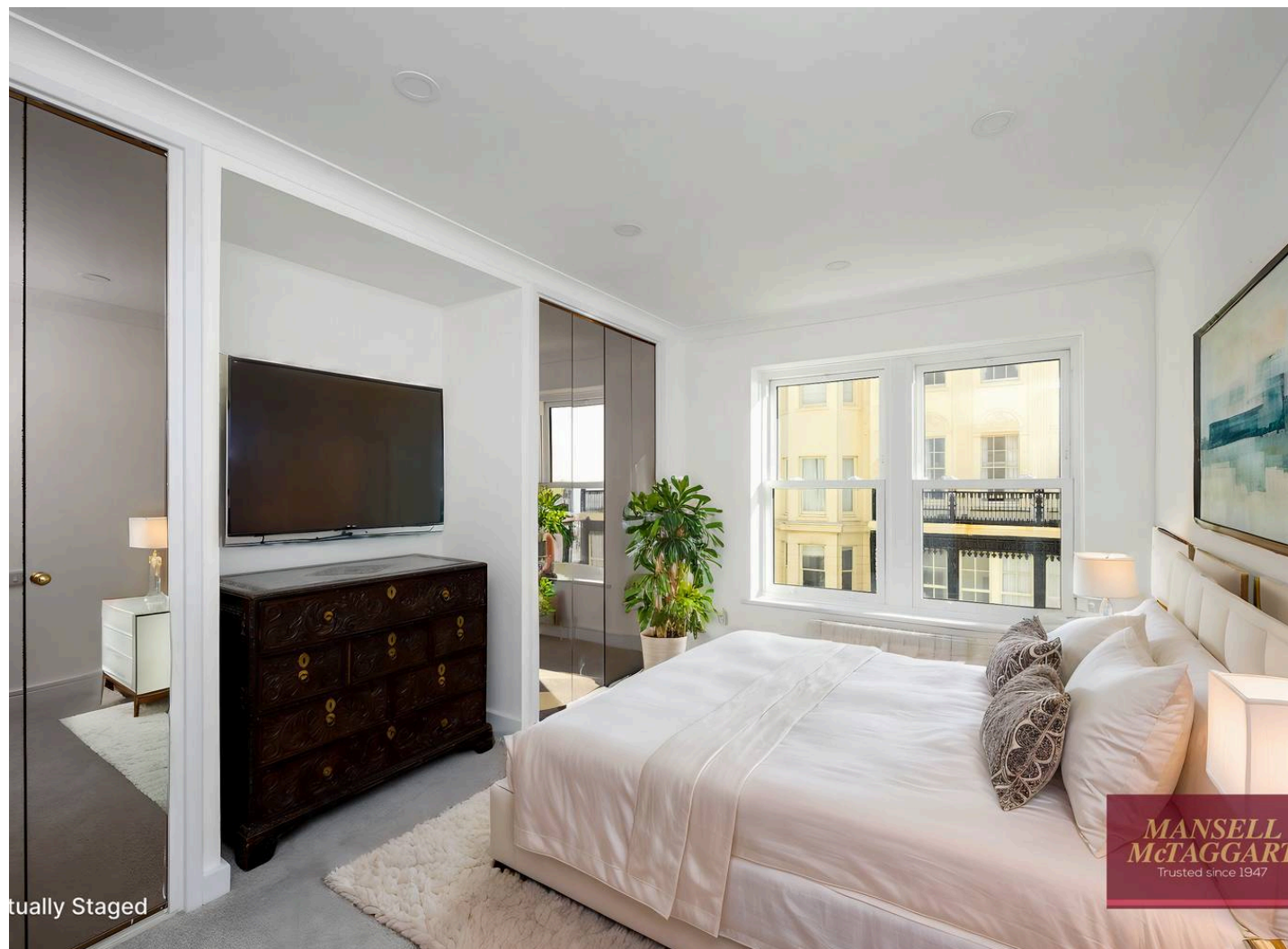
Kingsley Court, Brighton

A Three Bed, Two Bath apartment, 1,108sqft, 2nd floor, direct sea views, new kitchen, two new bathrooms, Juliet Balcony, underground parking, lift, bike store, portorage.

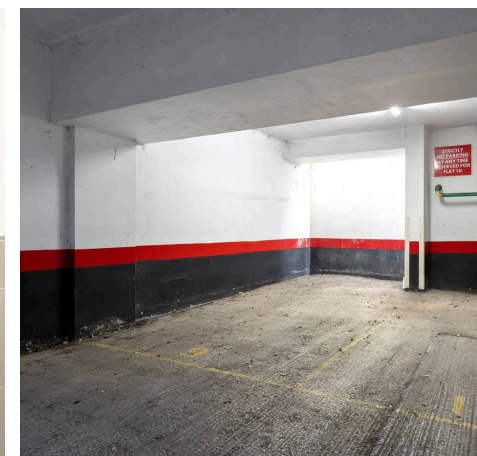
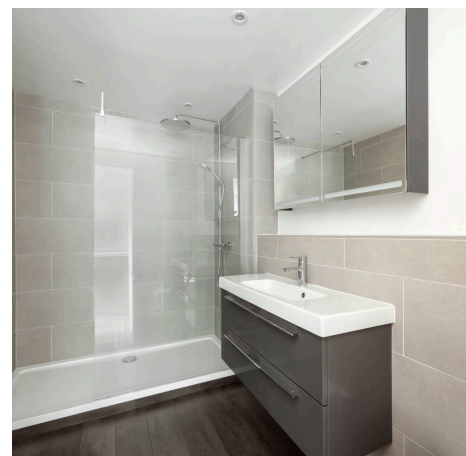
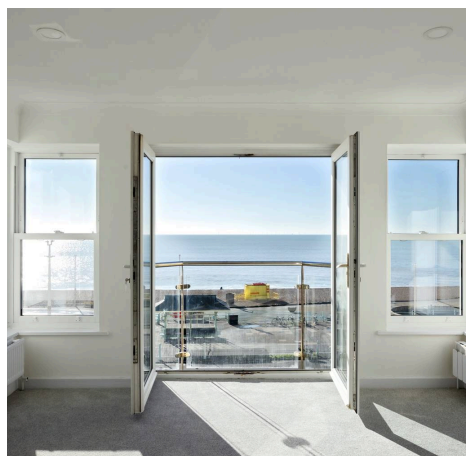
Council Tax band: C

Tenure: Share of Freehold

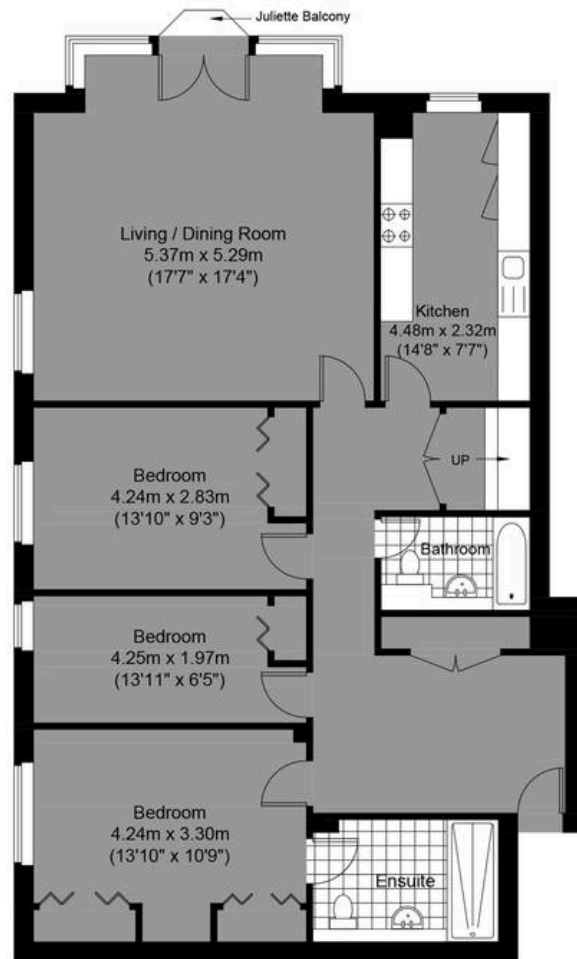
- A Share of Freehold, Three Bedroom, Two Bathroom, 2nd Floor Apartment measuring approx 1,108 sqft.
- Incredible 180 degree Sea Views encompassing the i360 Tower & iconic Victorian Bandstand
- A Stylish Newly Fitted Blaeu Kitchen with integrated Bosch appliances, offering direct Sea Views.
- Both Bathrooms are Newly Fitted (one en suite)
- A Spacious Living/Dining Room with Dual Aspect Windows, and Juliet Balcony Featuring Direct Sea Views.
- Three Built-In Storage Cupboards, Including a Walk-In Utility with PWMC, housing Combination Boiler.
- All Three Bedrooms offer either Built in or Fitted Wardrobes.
- Newly Carpeted Throughout.
- A Generous Sized, Secure, Underground Allocated Parking Bay, and further Double Length Visitor Bay, and secure Bicycle Storage Room.
- Portorage Available to Residents Six Days a Week 08:00am to 1.00pm



**MANSSELL
McTAGGART**
Trusted since 1947



Approximate Gross Internal Area= 102.96 sq m / 1108.25 sq ft



**MANSELL
McTAGGART**
— Trusted since 1947 —



Kings Road

Second Floor Flat
Approximate Floor Area
1108.25 sq ft (102.96 sq m)

Illustration for identification purposes only, measurements are approximate, not to scale.

© Mansell McTaggart



Mansell McTaggart Hove

170 Church Road, Hove - BN3 2DJ

01273 044929

hove@mansellmctaggart.co.uk

www.mansellmctaggart.co.uk/branch/hove/

