



Muntins Too Crowborough Road, Nutley TN22 3HU

£680,000  
**MANSELL  
McTAGGART**  
— Trusted since 1947 —

# Muntins Too Crowborough Road

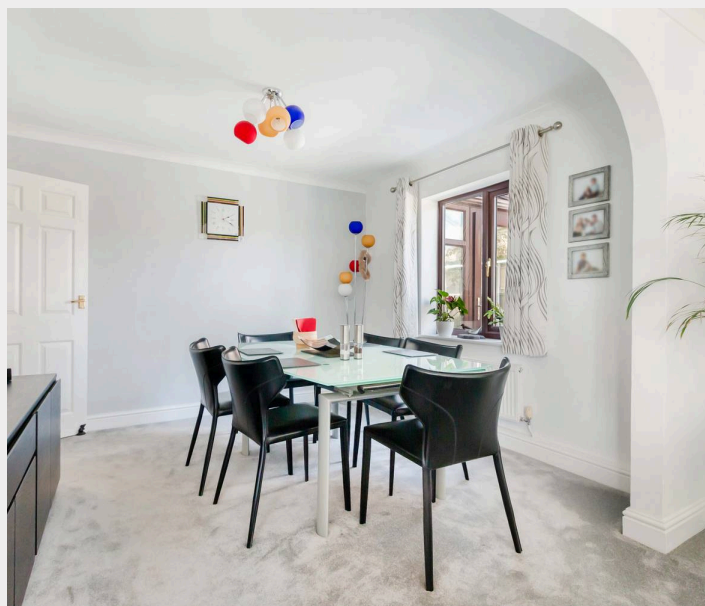
Nutley, Uckfield

A deceptively spacious, energy efficient three bedroom detached bungalow occupying a pleasant corner plot with a south facing rear garden, detached garage, and garden studio. Situated on the edge of the Ashdown Forest in this ever desirable village.

Muntins Too is a seldom found property having been significantly improved by the current owners to provide a beautifully finished modern home with a fully landscaped rear garden. The property boasts green efficient infrastructure with an air source heat pump, solar panels, and storage batteries.

The spacious accommodation is entered via a hallway with a cloakroom found nearby, there are three double bedroom lying to one side of the property and a beautifully tiled shower room. The main living area is open plan, enjoying a triple aspect and defined by a sitting room with a wood burning stove, bifold doors opening to the rear garden and a dining area. The kitchen has been beautifully fitted with a matching range of contemporary units and integrated Miele appliances, continuing off the kitchen is a glazed boot room/rear porch with access to the garden.

Council Tax band: F





## Muntins Too Crowborough Road

Nutley, Uckfield

Outside, there is a great driveway providing parking for several vehicles which in turn leads to the detached garage. The rear garden has an extensive stone seating terrace, with a manicured lawn, established flower and shrub beds, a further seating area and to one side is a well-appointed timber studio. The whole enclosed by hedging, affording complete seclusion and enjoying a southerly aspect.

- A deceptively spacious energy efficient three bedroom detached bungalow with a detached garage and garden studio
- Situated on the edge of the Ashdown Forest
- Significantly improved and beautifully finished
- Stunning completely secluded south facing rear garden
- Impressive open plan living room with wood burning stove, bi-fold doors and dining area
- Fully tiled shower room
- Kitchen with integrated Mielie appliances
- Three double bedrooms
- Cloakroom



# Muntins Too, Crowborough Road, Nutley



Approximate Gross Internal Area (Excluding Garage / Outbuilding) = 99.57 sq m / 1071.76 sq ft  
Illustration for identification purposes only, measurements are approximate, not to scale.

## Mansell McTaggart Uckfield

Mansell McTaggart, 204-206 High Street - TN22 1RD

01825 760770

[uf@mansellmctaggart.co.uk](mailto:uf@mansellmctaggart.co.uk)

[www.mansellmctaggart.co.uk/branch/uckfield](http://www.mansellmctaggart.co.uk/branch/uckfield)

Consumer Protection from Unfair Trading Regulations 2008 We have not tested any apparatus, equipment, fixtures, fittings or services and so cannot verify that they are in working order or fit for purpose. You are advised to obtain verification from your solicitor or surveyor. References to the tenure of a property are based on information supplied by the seller. We have not had sight of the title documents and a buyer is advised to obtain verification from their solicitor. Items shown in photographs are not included unless specifically mentioned within the sales particulars, but may be available by separate negotiation.