



45 Heathfield Park, Midhurst, West Sussex, GU29 9HL

Offers in Region of £435,000





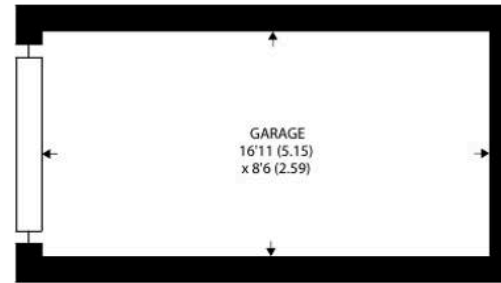
45 Heathfield Park, Midhurst, West Sussex, GU29 9HL

Freehold / EPC - D / Council Tax Band E

- Three Bedrooms, One Bathroom
- Beautifully Refurbished Throughout
- Open Plan Sitting / Dining Room
- Ground Floor Cloakroom
- Landscaped Garden
- Private Gated Access to Midhurst Common
- Garage

This beautifully refurbished three bedroom mid-terraced house offers a perfect blend of contemporary style and practical living. Upon entering, you are greeted by a welcoming hallway that leads to an open plan sitting and dining room, flooded with natural light and providing an ideal space for both relaxation and entertaining. The modern kitchen features high quality fixtures and fittings, with ample storage and workspace to suit all culinary needs. Upstairs, you will find three well-proportioned bedrooms, each thoughtfully decorated to create a calm and inviting atmosphere. The family bathroom is finished to a high standard, boasting stylish tiling and contemporary fittings. A ground floor cloakroom adds further convenience for busy households. The property is presented in immaculate condition throughout, making it ready to move into and enjoy from day one. Located close to local amenities, this home is perfectly positioned for families and professionals alike, offering easy access to schools, shops, and transport links. The landscaped rear garden provides a private and tranquil outdoor retreat, designed for low maintenance and year-round enjoyment. A paved patio area is perfect for outdoor dining or relaxing with friends and family, while the lawn offers space for children to play or for keen gardeners to add their own touch. The property also benefits from a garage, providing valuable off-road parking or additional storage space. With its excellent location and thoughtfully designed outdoor spaces, this property presents a rare opportunity to enjoy modern living in a sought-after setting.

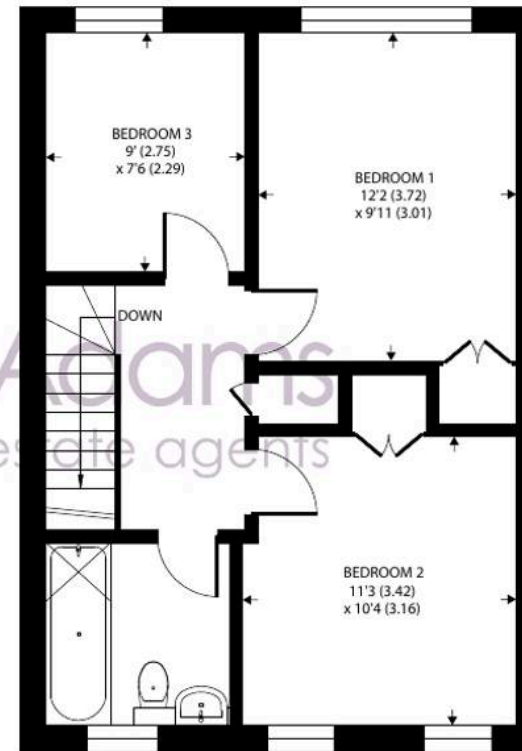




NOT SHOWN IN ACTUAL LOCATION



GROUND FLOOR



FIRST FLOOR

45 Heathfield Park, Midhurst

Approximate Area = 928 sq ft / 86.2 sq m

Garage = 143 sq ft / 13.2 sq m

Total = 1071 sq ft / 99.4 sq m

For identification only - Not to scale



Floor plan produced in accordance with RICS Property Measurement 2nd Edition, Incorporating International Property Measurement Standards (IPMS2 Residential). © natchecom 2026. Produced for Henry Adams. REF: 1457712



Henry Adams – Midhurst

Henry Adams, Bepton Court, 2 West Street – GU29 9NF

01730 817370 • midhurst@henryadams.co.uk • www.henryadams.co.uk/

Agents Note – Our particulars are for guidance only and are intended to give a fair overall summary of the property. They do not form part of any contract or offer, and should not be relied upon as a statement or representation of fact. Measurements, areas and distances are approximate only. Photographs may include lifestyle shots and pictures of local views.