

Flat 16, 2 Bell Foundry Close, Croydon

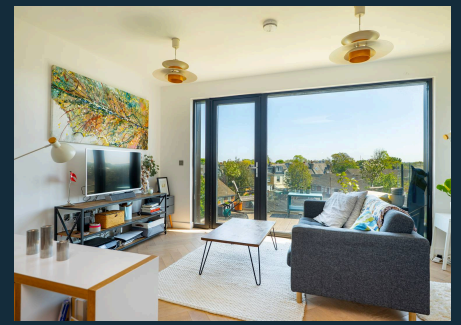
OIEO £300,000 Leasehold



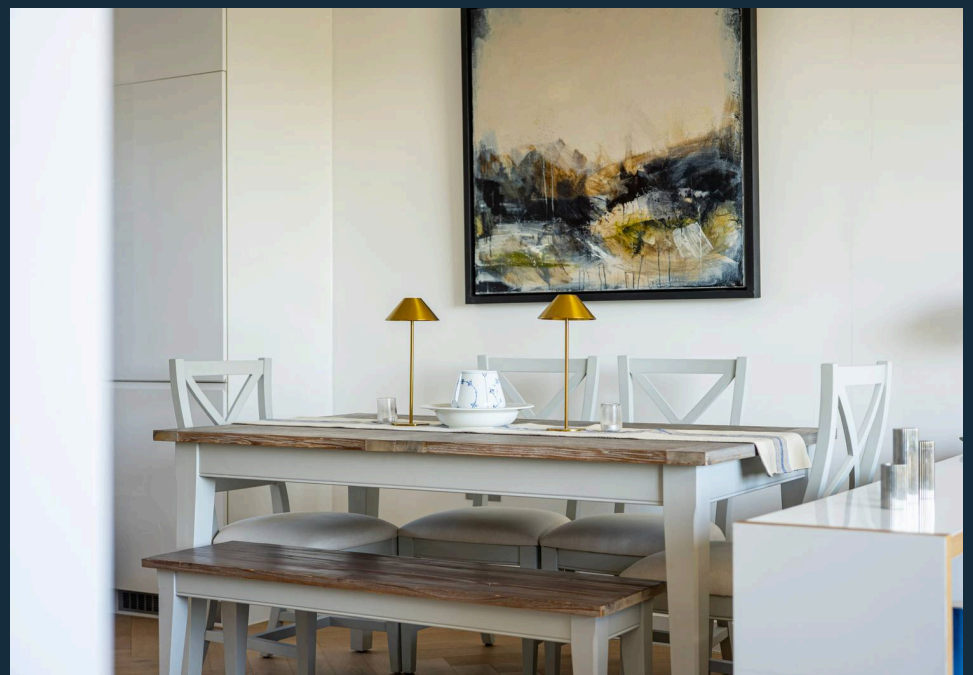
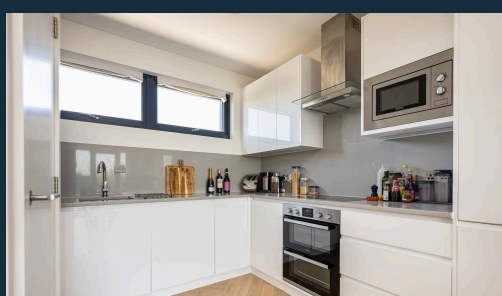
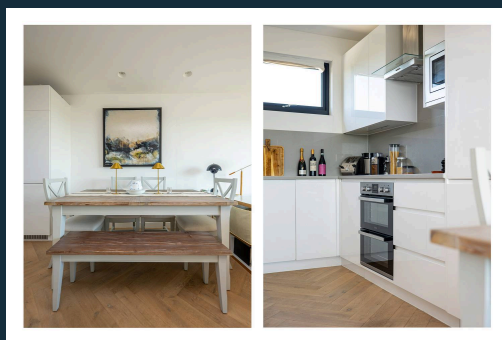
haboodle

A beautifully presented two-bedroom, two-bathroom apartment with allocated parking, set on the third floor of the increasingly popular Coppice Yard development, extending to approximately 780 sq ft / 72.5 sq m and offering an exceptional sense of light, privacy and far-reaching, uninterrupted views. Finished to a high specification throughout and benefitting from lift access, secure entry, this is modern apartment living done properly.

The apartment has been thoughtfully designed with contemporary living in mind, centred around a bright open-plan kitchen and reception space with large windows that flood the home with natural light throughout the day. The elevated position gives the property a noticeably different feel from many apartments locally, with a real sense of openness and privacy rarely found in modern developments. Both bedrooms are well-proportioned, with the principal bedroom benefitting from an en-suite shower room, whilst a separate modern family bathroom serves the remainder of the apartment. The overall finish mirrors the strong

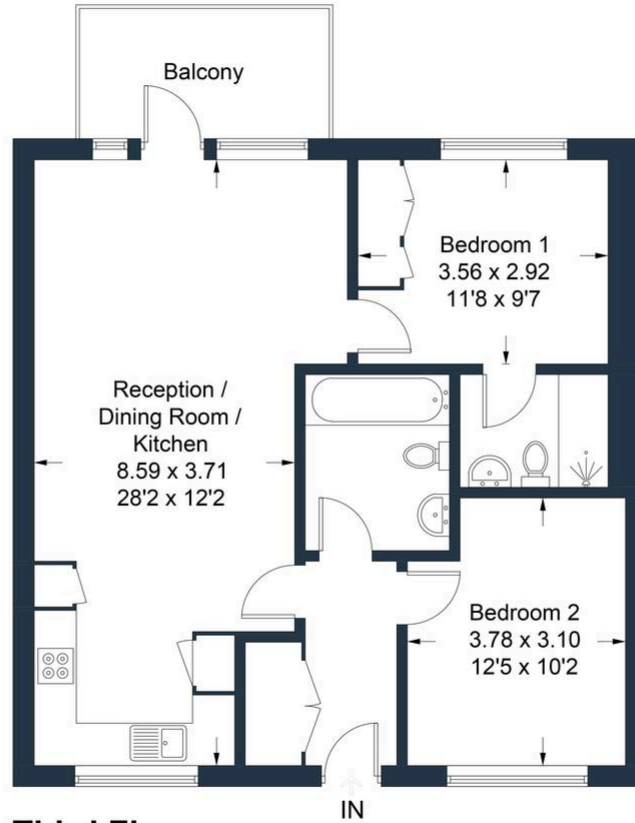


- › Third Floor Apartment
- › Approx. 780 Sq Ft / 72.5 Sq M
- › Two Bedrooms / Two Bathrooms
- › Lift Access / Secure Entry System
- › Uninterrupted Views / Exceptionally Bright Throughout
- › Open Plan Kitchen / Reception Room
- › High Specification Finish
- › Allocated Parking Space / Residents Swimming Pool
- › Excellent Transport Links
- › Popular Coppice Yard Gated Development



Bell Foundry Close, Coppice Yard, CR0

Approximate Gross Internal Area = 72.5 sq m / 780 sq ft



Third Floor

Illustration for identification purposes only, measurements are approximate, not to scale. Produced by Haboodle Estate Agents (ID1295782)



haboodle