



8 Prestbury Court Castle Rise, Prestbury

Macclesfield

£475,000

**GASCOIGNE
HALMAN**

THE AREA'S LEADING ESTATE AGENCY



8 Prestbury Court Castle Rise

Prestbury, Macclesfield

A beautifully proportioned top floor apartment with spectacular views and lift access in this highly regarded development just a short walk from Prestbury Village.

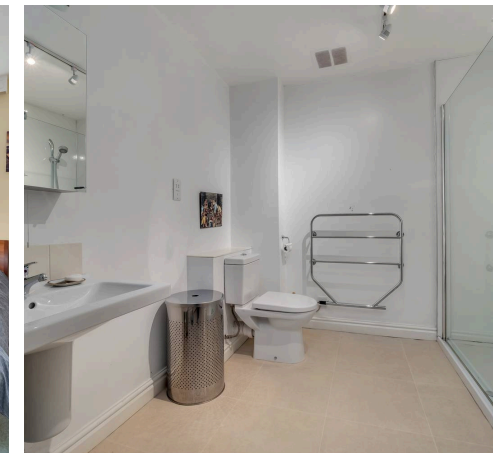
Council Tax band: F

Tenure: Leasehold

EPC Energy Efficiency Rating: E

EPC Environmental Impact Rating: F

- CLOSE WALKING DISTANCE TO VILLAGE
- LIFT ACCESS
- SPECTACULAR FAR REACHING VIEWS
- LANDSCAPED COMMUNAL GARDENS
- AMPLE RESIDENT & VISITOR PARKING
- NO ONWARD CHAIN



8 Prestbury Court Castle Rise

Prestbury, Macclesfield

Prestbury Court is a small select development of just nine apartments set within private communal gardens and close walking distance from Prestbury Village.

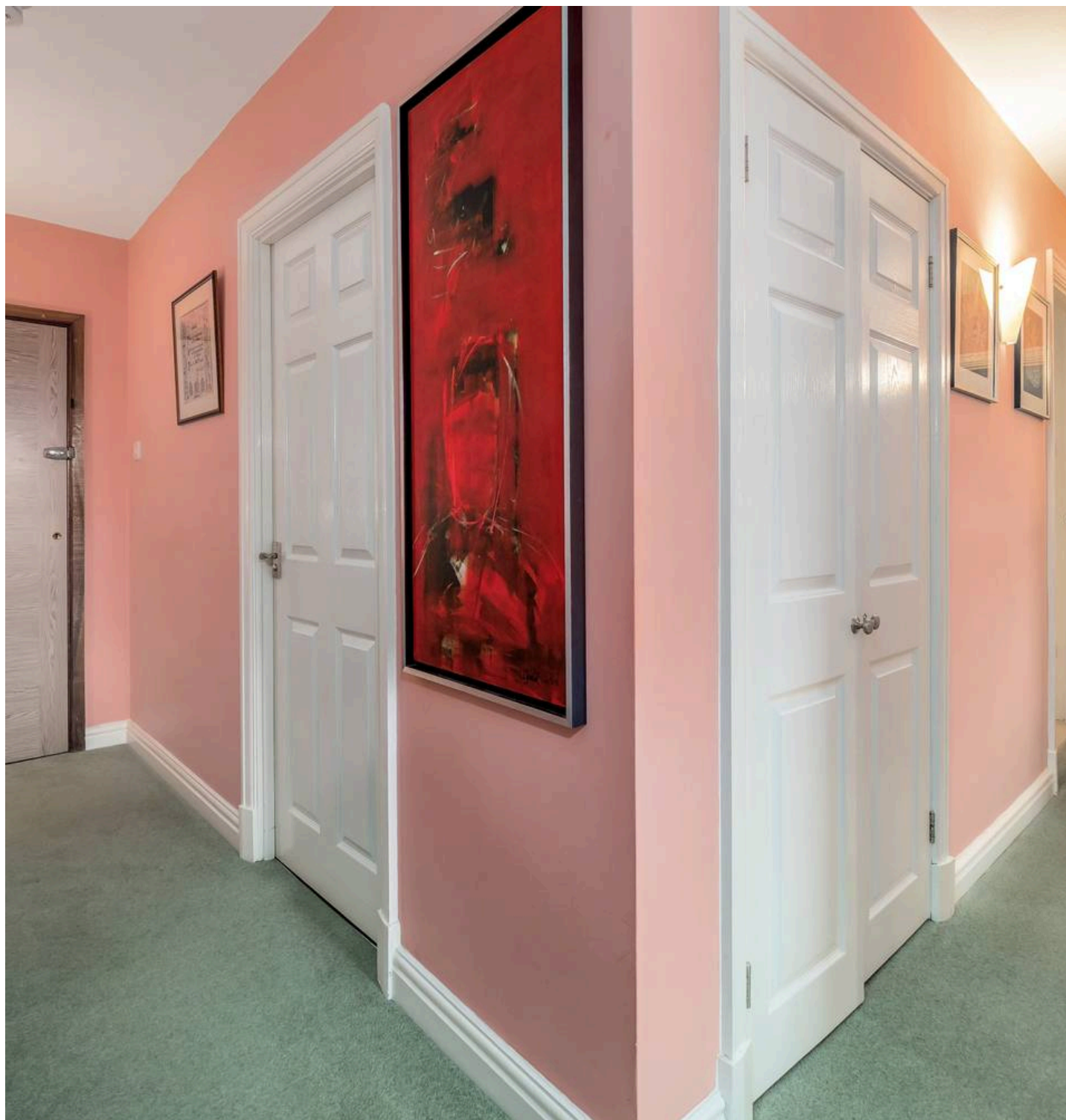
Each apartment benefits from a superb sized double tandem garage (with internal access) and there is ample parking for residents and visitors.

The accommodation comprises in brief; Communal entrance vestibule with post boxes and lift to all floors. The apartment then has an individual entrance hall with cloaks cupboard and separate WC. There is an extensive lounge/dining room with two sets of French doors which open on to a Juliet balcony with wonderful views across to the hills and White Nancey. This large, bright space also lays host to an electric feature fire place. The kitchen is fully fitted with modern appliances with room for a table and chairs.

Both bedrooms are good size double rooms with the main room currently being used as a large office space to offer either a second reception room or bedroom space. There is also a large Shower Room which completes the accommodation.

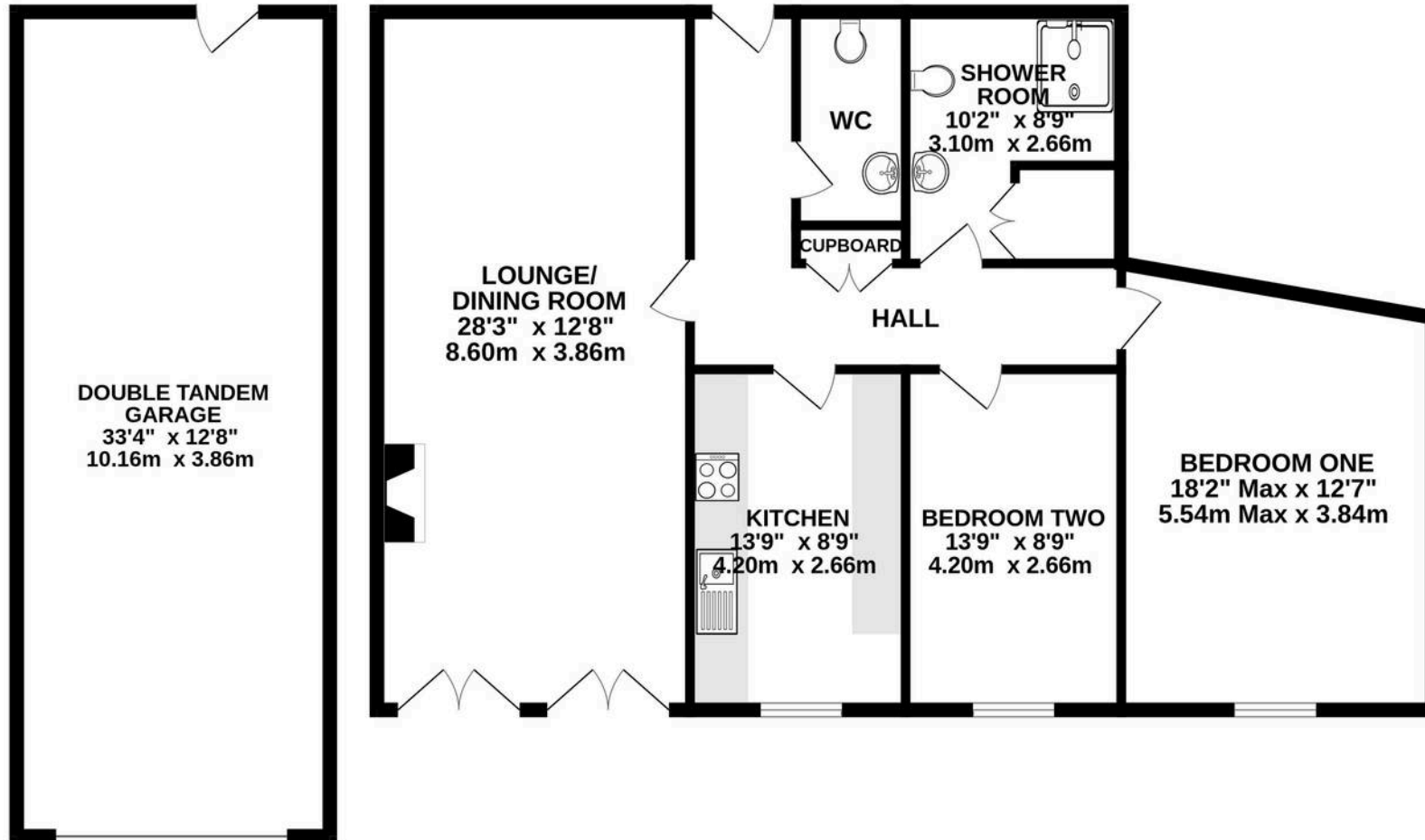
Externally, all residents are able to enjoy the private maintained gardens with summerhouse and bungalow with kitchen and toilet facilities and with a large conservatory style seating area opening out on to a terrace.

The historical Village of Prestbury is regarded as one of the most picturesque villages in Cheshire. Suitable for a broad demographic the Village boasts excellent access to all the amenities of the general area : Railway Station, Local shops, Restaurants &



FLOORPLAN

1479 sq.ft. (137.4 sq.m.) approx.



TOTAL FLOOR AREA : 1479 sq.ft. (137.4 sq.m.) approx.
Measurements are approximate. Not to scale. Illustrative purposes only
Made with Metropix ©2026

You can include any text here. The text can be modified upon generating your brochure.



THE AREA'S LEADING ESTATE AGENCY