



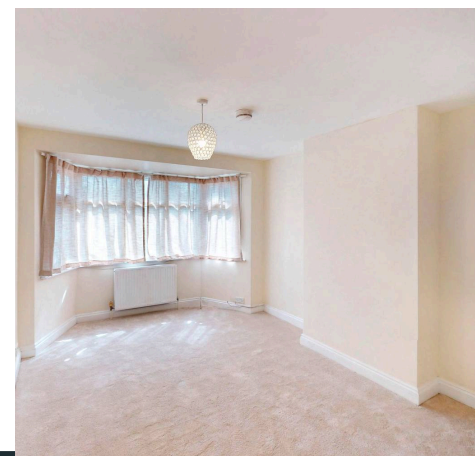
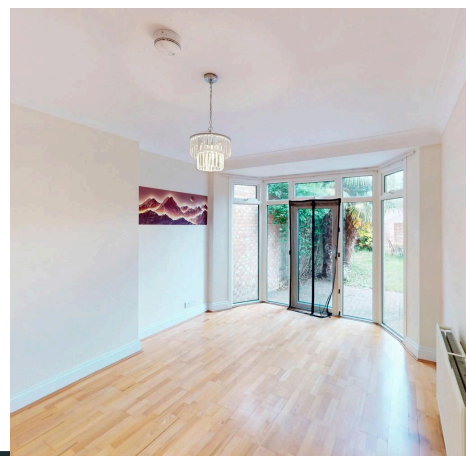
Pearl & Chance

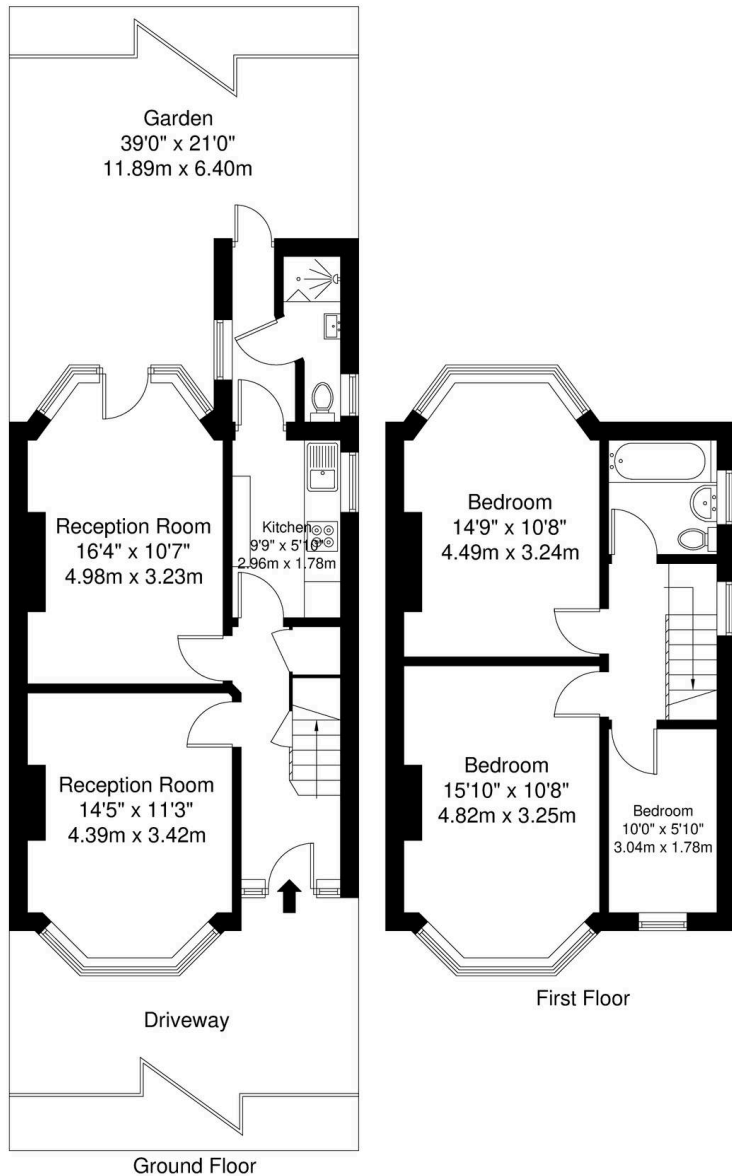
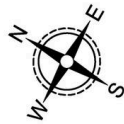
Cheviot Gardens, London, NW2
£2,700 PCM

Cheviot Gardens, London, NW2

Available Now! Located within the well-established Golders Green Estate, this three bedroom semi-detached house offers good living space, off-street parking, and a private rear garden. The ground floor includes two separate reception rooms, with the rear reception opening directly onto the garden. The kitchen is set separately and leads through to a ground floor shower room. Upstairs are two spacious double bedrooms, a further single bedroom, and a modern family bathroom. The property also benefits from gas central heating, double glazing, and is offered part furnished. Cheviot Gardens is a well-regarded residential road with easy access to Golders Green High Street, the North Circular, M1, and Brent Cross, along with nearby parks, schools, and local amenities. This property must be viewed, contact us today to arrange a viewing.

- Available Now
- Deposit £3,115
- Council Tax Band: E
- Part Furnished
- Three Bedrooms
- Two Reception Rooms
- Downstairs Shower Room
- Off Street Parking
- Wooden Flooring

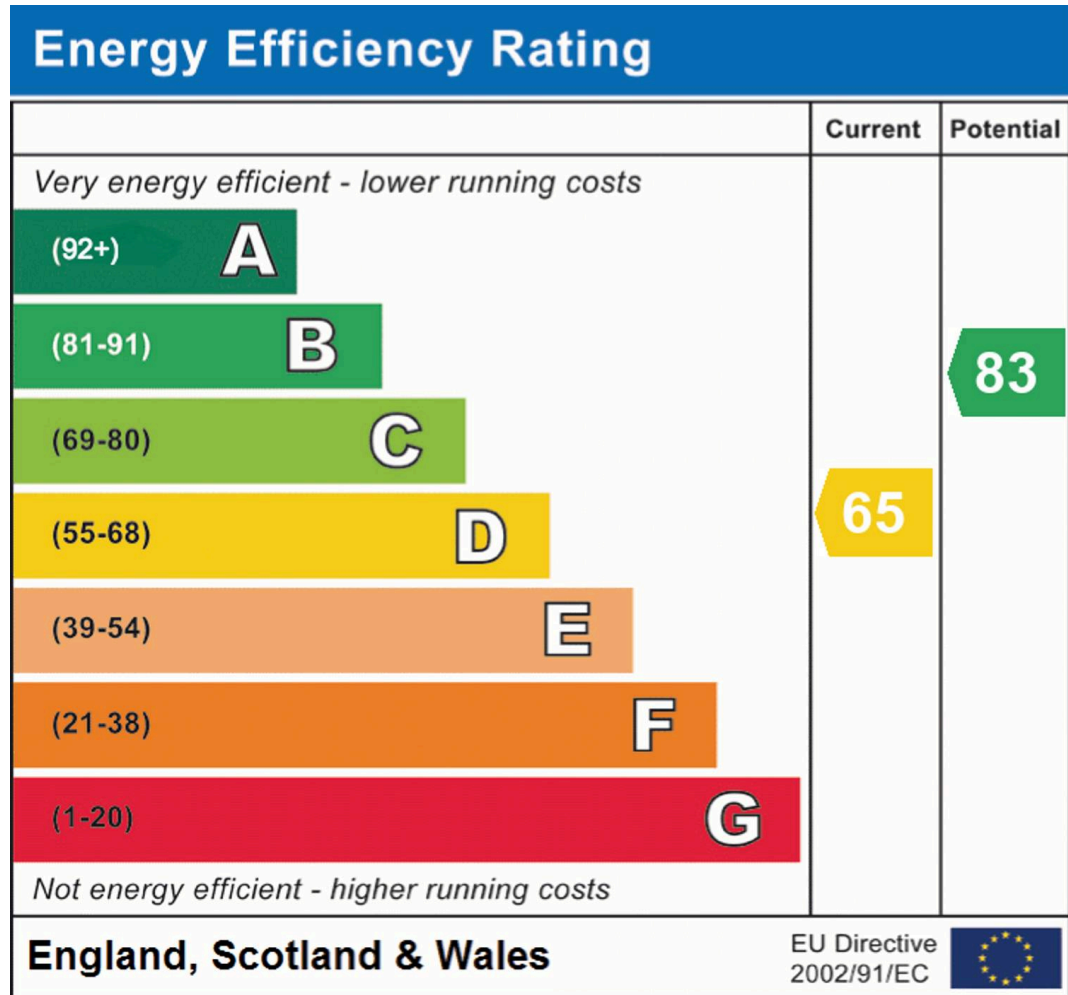




Cheviot Gardens, NW2

Total Gross Internal Area = 93.7 sq m / 1008 sq ft

All Measurements are approximate and for identification guideline purposes only, not to scale.
Compliant with the RICS code of measuring practice





Pearl & Chance

1 Hoop Lane, London - NW11 8JR

0208 059 5559

info@pearlandchance.co.uk

<http://pearlandchance.co.uk>



IMPORTANT: These sales particulars have been prepared as a general guide only. A detailed survey has not been carried out, nor the services, appliances and fittings tested. Room sizes should not be relied upon for furnishing purposes and are approximate. If floor plans are included, they are for guidance only and illustration purposes only and may not be to scale. If there are any important matters likely to affect your decision to buy, please contact us before viewing the property.