



Council Tax band: D

Tenure: Share of Freehold

EPC Energy Efficiency Rating: D

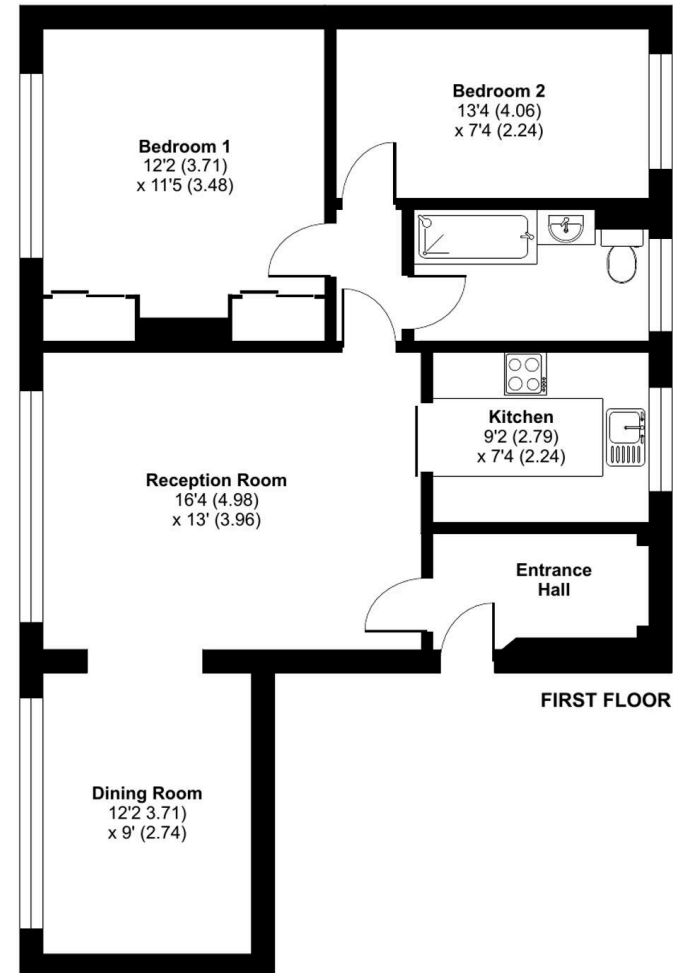
## Dryden Court, Parkleys, Richmond, TW10

Approximate Area = 820 sq ft / 76.1 sq m

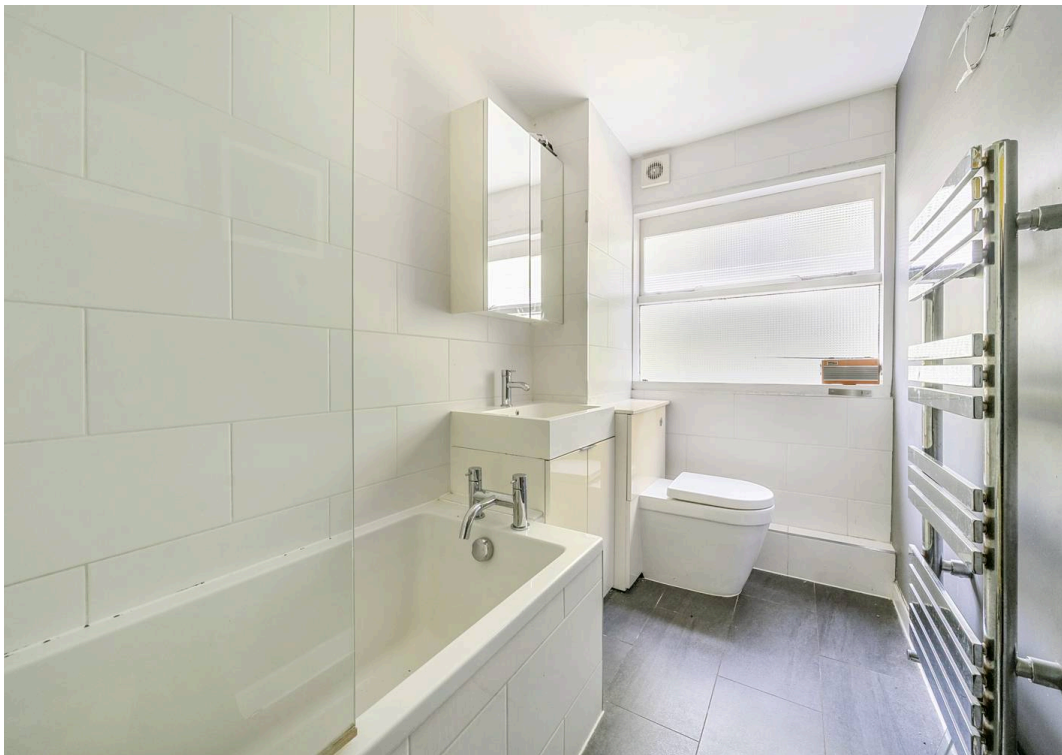
For identification only - Not to scale



- A larger-style 2-bedroom, 1st-floor Span apartment (approx. 775 sq ft).
- Extended reception and enlarged second bedroom compared to standard layouts.
- Beautiful communal rear garden with mature monkey puzzle and catalpa trees.
- Set in a Grade II listed conservation area designed by renowned architect Eric Lyons.
- South-west facing living area with six windows for all-day sunshine!
- Close to Ham Common, Richmond Park and Ham Parade shops, cafés and 24-hour bus routes
- Within reach of Ofsted Outstanding Grey Court School, Kingston Academy, German School, Tiffin Girls, and Fernhill
- Original style features including fireplace and internal glass doors.









## Mervyn Smith

315 Richmond Road, Kingston Upon Thames - KT2 5QU

020 8549 5099 • [mail@mervynsmith.co.uk](mailto:mail@mervynsmith.co.uk) • <http://www.mervynsmith.co.uk/>

This document is for informational purposes only and does not constitute legal or financial advice. While we strive to ensure accuracy, we do not accept liability for errors or omissions. Buyers and sellers should seek independent professional advice before making any decisions. Property details are subject to change and should be independently verified.