



15 Knightwood Drive Killarney Park, Nottingham – NG6 8WX

Guide Price £165,000



15 Knightwood Drive Killarney Park

Nottingham

PART EXCHANGE CONSIDERED! Available to the over 45's and with no chain, this 2 bedroom park home boasts impressive views, a lounge and dining kitchen alongside landscaped gardens and a gated private driveway. Viewing advised!
Council Tax band: A

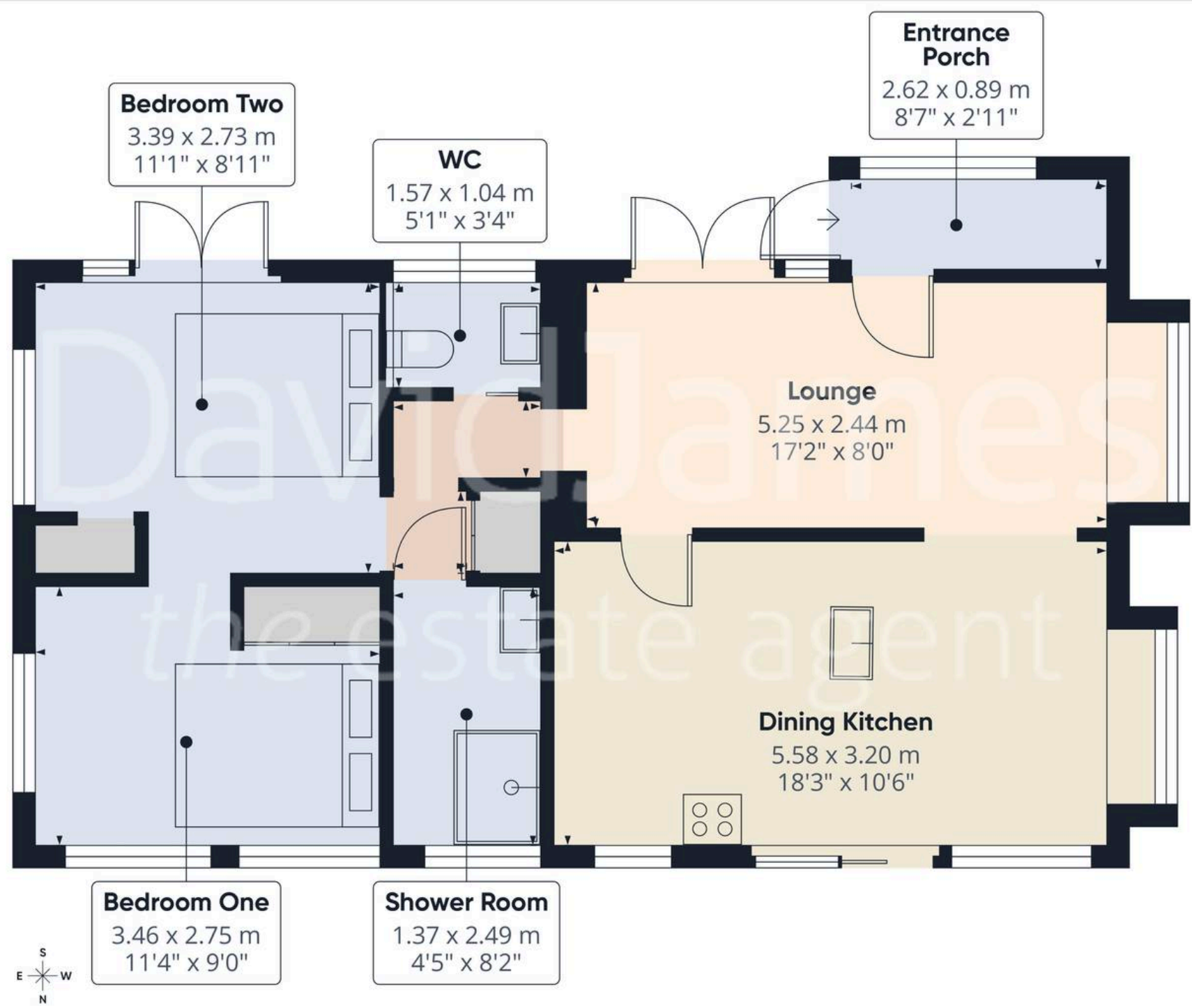
Tenure: Non-Traditional Tenure

- Park home sold with no upward chain
- Available to the over 45's and ideal for those seeking single-storey living
- Peaceful location with stunning surrounding views
- Bright lounge with natural light and French doors opening directly onto the gardens
- Dining kitchen with walnut-effect worktops and double Belfast-style sink
- Two generous double bedrooms both with built-in storage
- French doors from one bedroom opening directly to the gardens
- Shower room with a modern white suite and electric shower
- Separate WC providing additional convenience
- Gated driveway offering parking space for two vehicles
- Good-sized plot with landscaped gardens









Approximate total area⁽¹⁾
62.1 m²
669 ft²

(1) Excluding balconies and terraces

Calculations reference the RICS IPMS 3C standard. Measurements are approximate and not to scale. This floor plan is intended for illustration only.

GIRAFFE360



David James Estate Agents

98-100 Front Street, Arnold - NG5 7EJ

0115 955 5550 • arnold@david-james.com • www.david-james.com

These particulars are produced in good faith and are set out as a general guide only. Measurements are approximate and floor plans are for illustrative purposes only. Services have not been tested. We have established professional relationships with third-party suppliers for the provision of services to Clients, details of which can be found on the property listing page on our website.