



Hertford House Taywood Road, Northolt

Offers in Region of £285,000

SAB
ESTATES



Hertford House

Taywood Road, Northolt

- Underground Parking Space
- Master Bedroom with En Suite
- Leasehold: 102 Years Remaining
- Juliette Balcony
- Water Bill Included in Service Charge
- Great Transport Links
- Excellent Condition Throughout
- Service Charge: £215 pcm
- Ground Rent: £200 pa

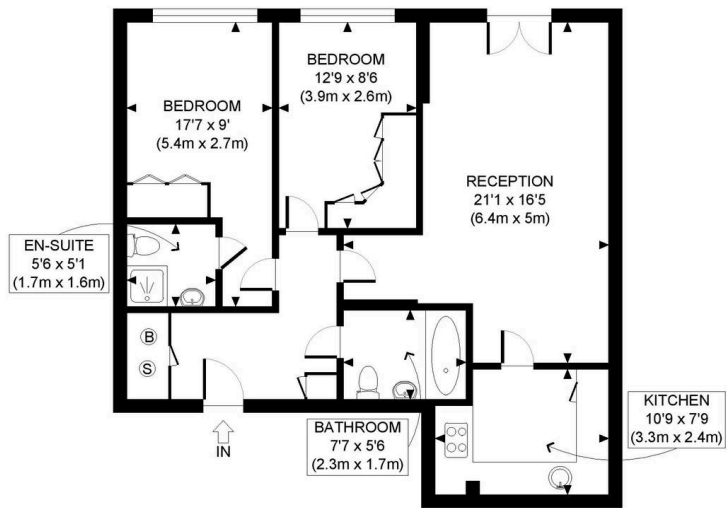
Council Tax band: D

Tenure: Leasehold

EPC Energy Efficiency Rating: B

EPC Environmental Impact Rating:





FOURTH FLOOR
 GROSS INTERNAL
 FLOOR AREA 760 SQ FT



APPROX. GROSS INTERNAL FLOOR AREA: 760 SQ FT/ 71 SQM

This plan is for illustrative purposes only and should be used as such by any prospective client. Whilst every attempt has been made to ensure the accuracy of the Floor Plan contained here, measurements of the doors, windows, rooms and any other items are approximate and no responsibility is taken for any errors, omissions, or misstatement. The services, systems and appliances shown have not been tested and no guarantee as to the operability or efficiency can be given.





SAB Estates

236-238 Ruislip Road, Greenford - UB6 9RS

020 8575 2929 • info@sabestates.com • www.sabestates.com/