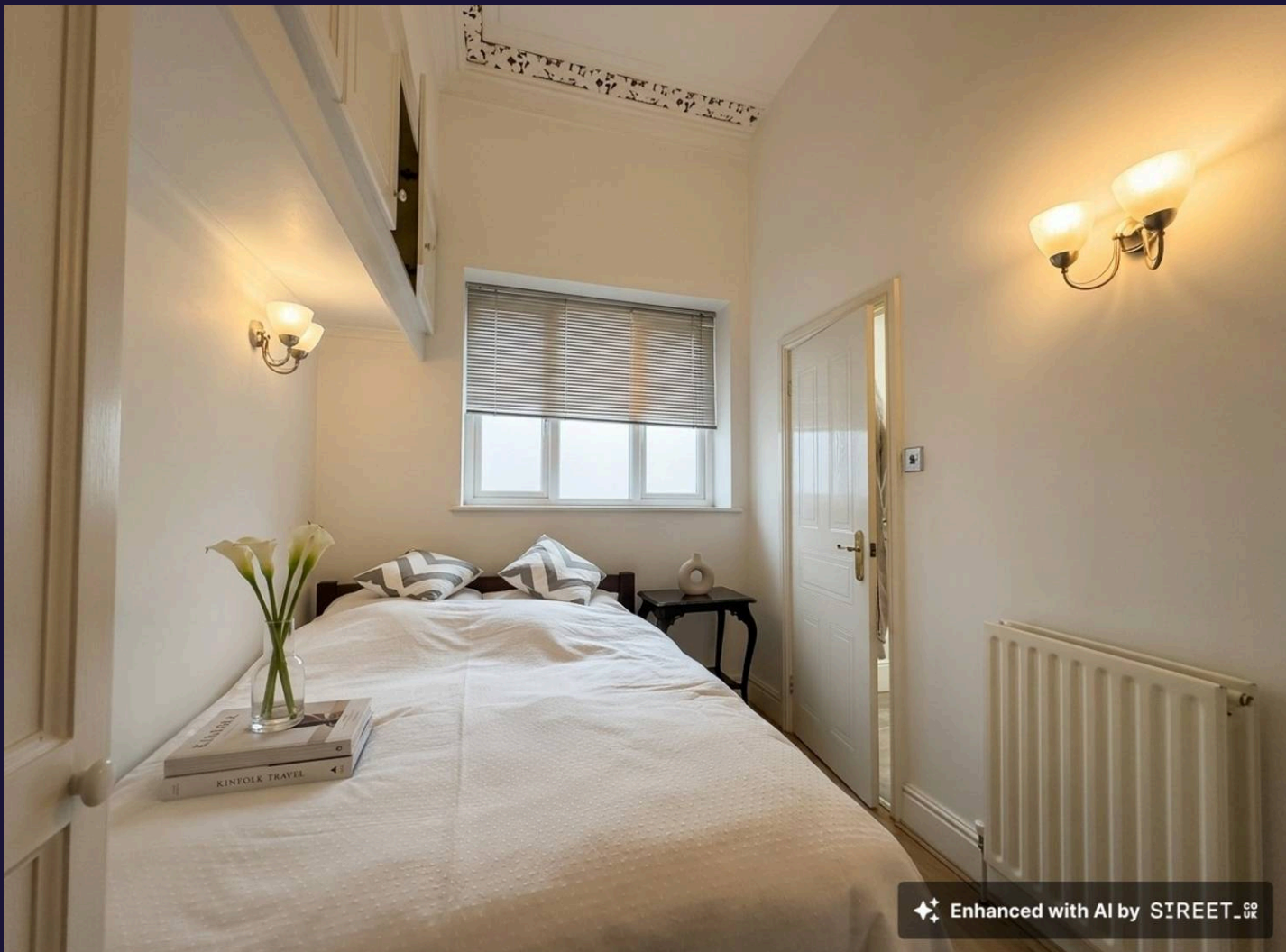




Flat 1, Pelham Crescent, Nottingham
£735 pcm

 **Comfort
Estates**



Flat 1

Pelham Crescent, Nottingham

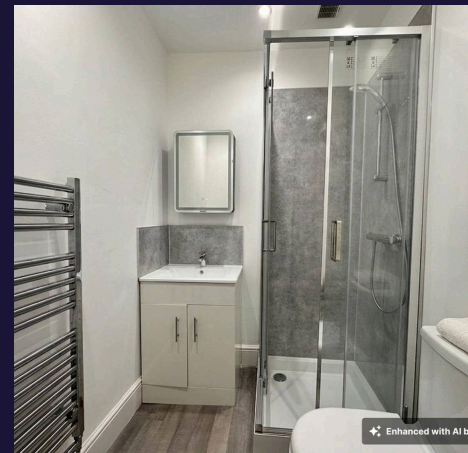
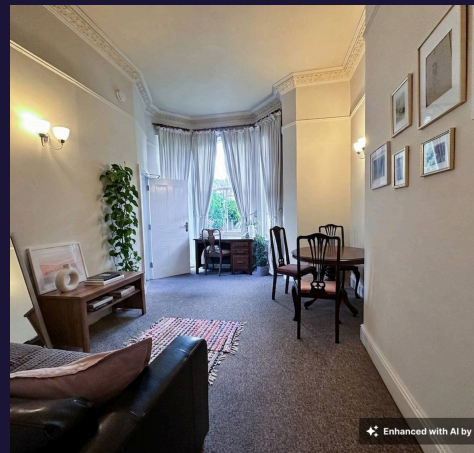
Comfort Estates are pleased to present this ground floor one-bedroom apartment located on Pelham Crescent within the highly sought-after The Park Estate.

The property offers a spacious living and dining area, a fitted kitchen with appliances, a double bedroom and a modern en-suite bathroom. Floor-to-ceiling windows in the lounge allow plenty of natural light to flood the apartment, creating a bright and airy living space. Available from 2nd July 2026, the apartment is offered fully furnished and benefits from built-in storage located in both the hallway and bedroom.

Situated on Pelham Crescent, residents also have access to a communal garden and free on-site parking for one car. Included within the rent are the Park Rates, along with a gardener and cleaner for the communal entrance, hallway and stair areas. The property is within walking distance of Nottingham City Centre, where you'll find a wide range of amenities including retail shops, cafés, bars, restaurants and leisure facilities. The Park Estate is renowned for its historic architecture, peaceful surroundings and attractive green spaces to enjoy during the warmer months.

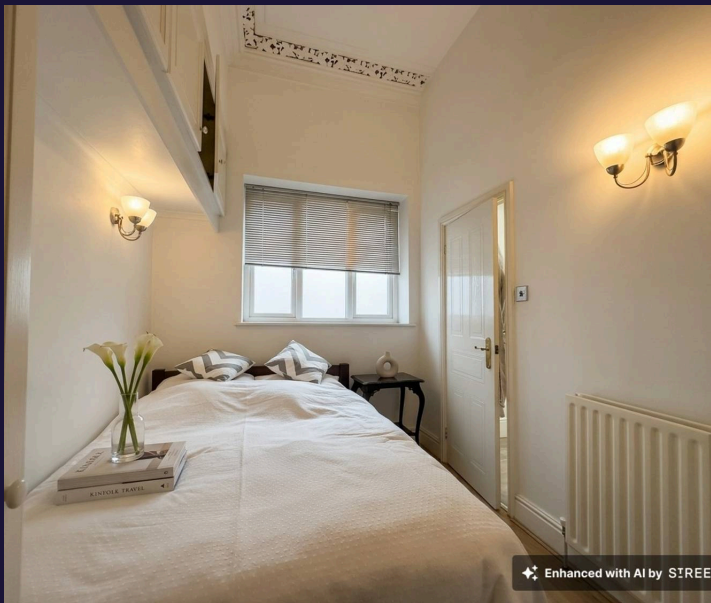
Ideal for a professional single occupant or couple – get in touch today to arrange a viewing.

Comfort Estates are pleased to present this ground floor one-bedroom apartment located on Pelham Crescent within the highly sought-after The Park Estate





You can include any text here. The text can be modified upon generating your brochure.



Enhanced with AI by SIREE



Enhanced with AI by SIREE



Bedroom

11' 1" x 7' 7" (3.38m x 2.31m)

Double bedroom with high ceilings, neutral décor and carpeted flooring throughout. The room is furnished with a bed and mattress, bedside table and a fitted window blind. Built-in storage cupboards along the wall and above the bed provide excellent storage space, while the bedroom also benefits from direct access to the en-suite bathroom.

Kitchen

7' 9" x 5' 0" (2.35m x 1.52m)

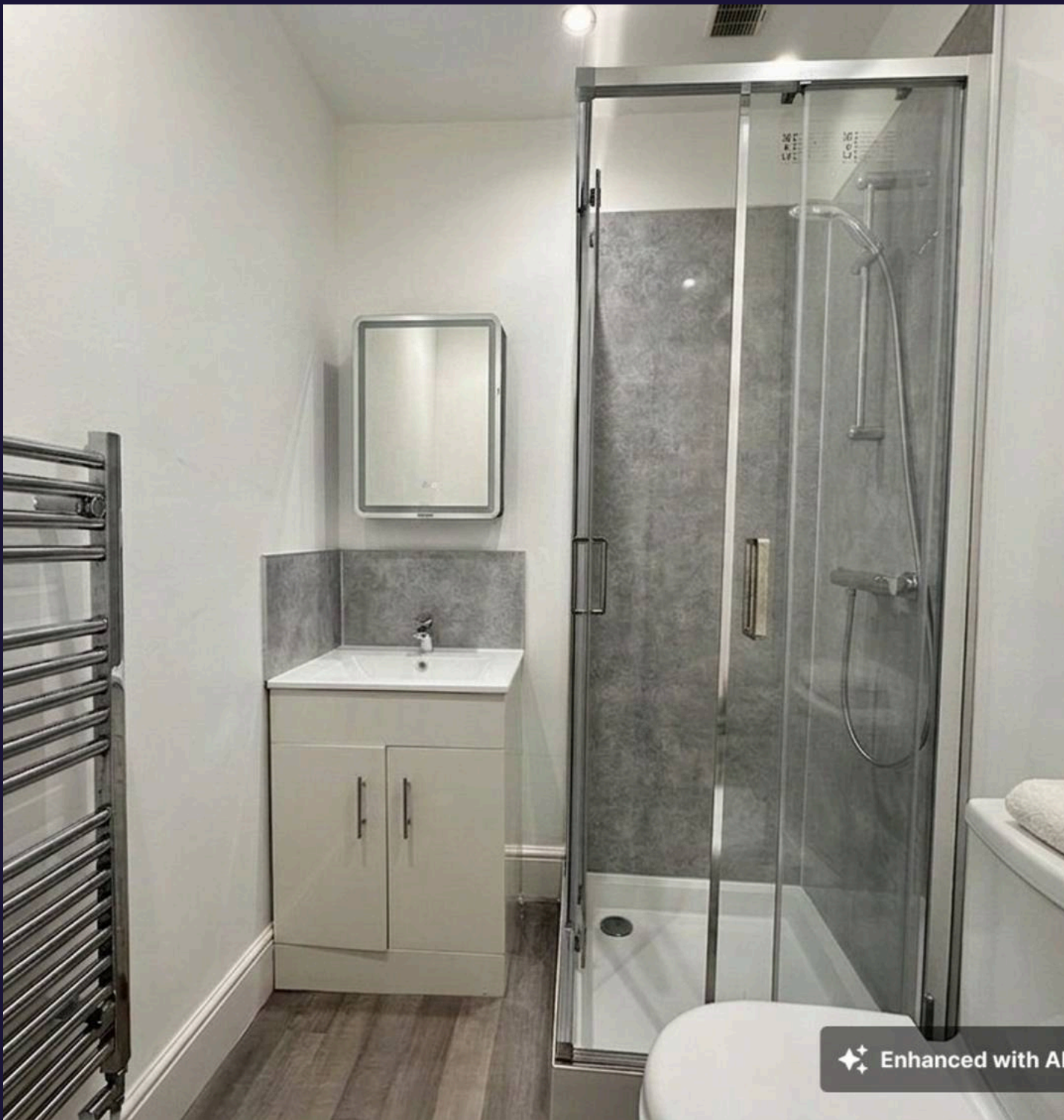
The kitchen is fitted with white gloss wall and base units, offering ample storage space, complemented by contrasting dark grey worktops and laminate-effect flooring. Appliances include a gas hob, oven, washing machine and undercounter fridge/freezer, creating a practical and modern kitchen space.

Lounge/Diner

17' 6" x 10' 11" (5.33m x 3.34m)

Spacious living and dining area featuring high ceilings and floor-to-ceiling windows, allowing plenty of natural light to flood the space. Neutrally decorated with carpet throughout, the room is furnished with a sofa, TV stand, dining table and chairs, along with a dedicated desk and chair area, making it ideal for both relaxing and working from home.

✦ ✦ ✦ Enhanced with AI



Bathroom

5' 4" x 5' 0" (1.62m x 1.52m)

The modern en-suite bathroom is fitted with everything you need, including a shower cubicle with contemporary grey aqua boarding, WC, wash basin with vanity unit, illuminated mirror and a large heated towel rail.

Hallway

Upon entering the flat there is a small entrance hallway complete with handy built in storage cupboards.

✦ ✦ ✦ Enhanced with AI



**Comfort
Estates**



Ground Floor Apartment

Approx. 35.7 sq. metres (384.7 sq. ft)



Comfort Estates

Comfort Estates, 47 Derby Road - NG1 5AW

0115 933 8997 • info@comfortestates.co.uk • www.comfortestates.co.uk