





32 Damian Way

Hassocks,

This three bedroom detached bungalow is situated in a sought after location in a quiet cul de sac, within walking distance to both Keymer and Hassocks, the property has good potential to extend subject to necessary planning consent. Being sold with no on going chain viewing is highly recommended.

The entrance hallway has a loft hatch and two storage cupboards and a cloak room. Rooms leading from the hallway include a bay fronted dual aspect living room and feature gas fireplace, three good size bedrooms one of which could also be a separate dining room with a sliding patio door onto the south facing rear garden, a shower room with its own shower cubicle, wash hand basin with vanity unit, and a separate WC. Fitted kitchen with eye level and base units, integrated oven and grill, four ring gas hob, integrated extractor fan a cupboard housing a Worcester combi boiler, space for fridge freezer and washing machine and a door onto the south facing rear garden.



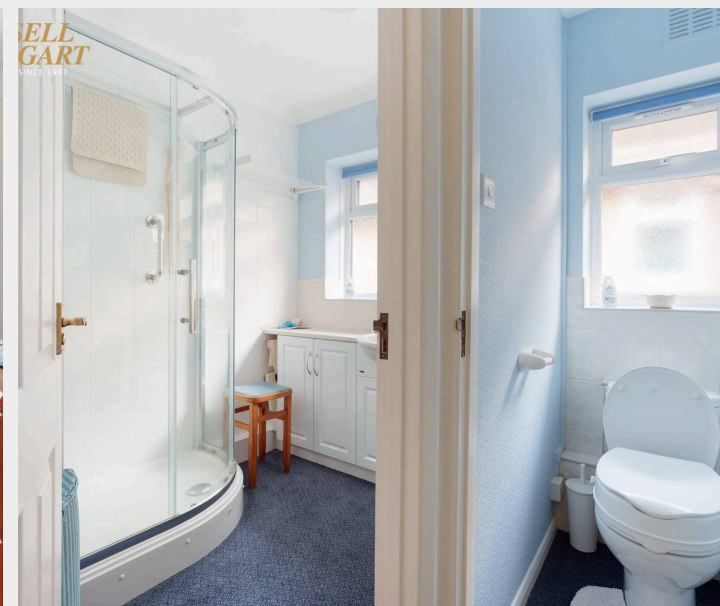
32 Damian Way

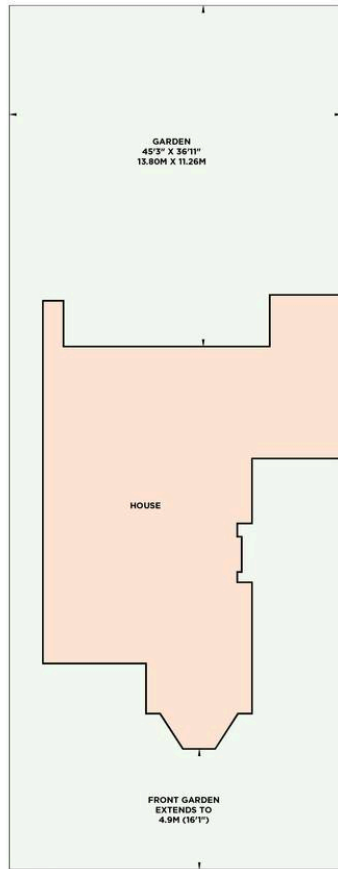
Hassocks,

Outside, the rear garden has a southern aspect with distant views to the south downs, various borders to side and rear, patio areas, artificial lawn and two useful storage cupboards. There is a garage that can be accessed from the rear garden with power and lighting and electric roller shutter door.

The front garden is bordered and has a driveway with parking for up to three cars.

- Three bedroom detached bungalow
- Quiet location
- South facing rear garden
- Garage
- Off road parking for three cars
- Distant views to south downs
- Potential to extend STNPC
- Shower room and separate WC
- No ongoing chain
- EPC: C Council tax: E

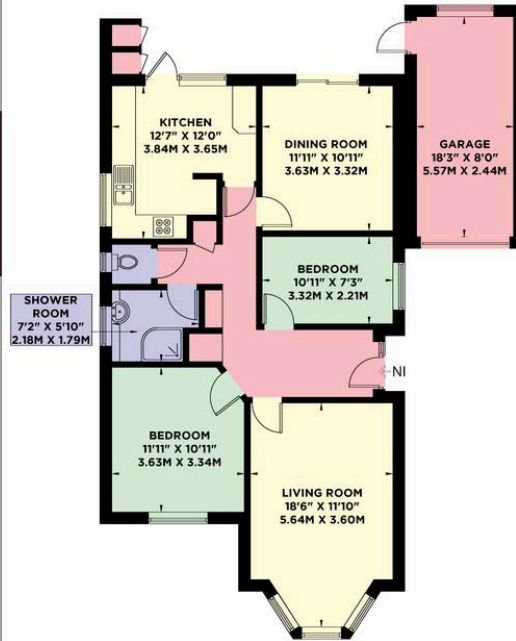




Site Plan

BESPOKE
PROPERTY MARKETING

Copyright Bespoke Property Marketing 2025
Floor plan is for illustration and identification purposes only and is not to scale. Plots, gardens, balconies and terraces are illustrative only and excluded from all area calculations. All site plans are for illustration purposes only and are not to scale. This floor plan has been produced in accordance with Royal Institution of Chartered Surveyors' International Property Standards 2 (IPHS2). Every attempt has been made to ensure the accuracy however all measurements, fixtures, fittings and data shown is an approximate interpretation for illustrative purposes only.

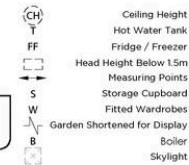


Ground Floor
99.7 sq m / 1073 sq ft

DAMIAN WAY

APPROXIMATE GROSS INTERNAL AREA
99.7 sq m / 1073 sq ft

INCLUDING LIMITED USE AREA OF
13.6 sq m / 146 sq ft



Mansell McTaggart Hassocks

Mansell McTaggart, 29 Keymer Road – BN6 8AB

01273 843377

has@mansellmctaggart.co.uk

www.mansellmctaggart.co.uk/branch/hassocks

MANSELL
McTAGGART
Trusted since 1947

Consumer Protection from Unfair Trading Regulations 2008 We have not tested any apparatus, equipment, fixtures, fittings or services and so cannot verify that they are in working order or fit for purpose. You are advised to obtain verification from your solicitor or surveyor. References to the tenure of a property are based on information supplied by the seller. We have not had sight of the title documents and a buyer is advised to obtain verification from their solicitor. Items shown in photographs are not included unless specifically mentioned within the sales particulars, but may be available by separate negotiation.