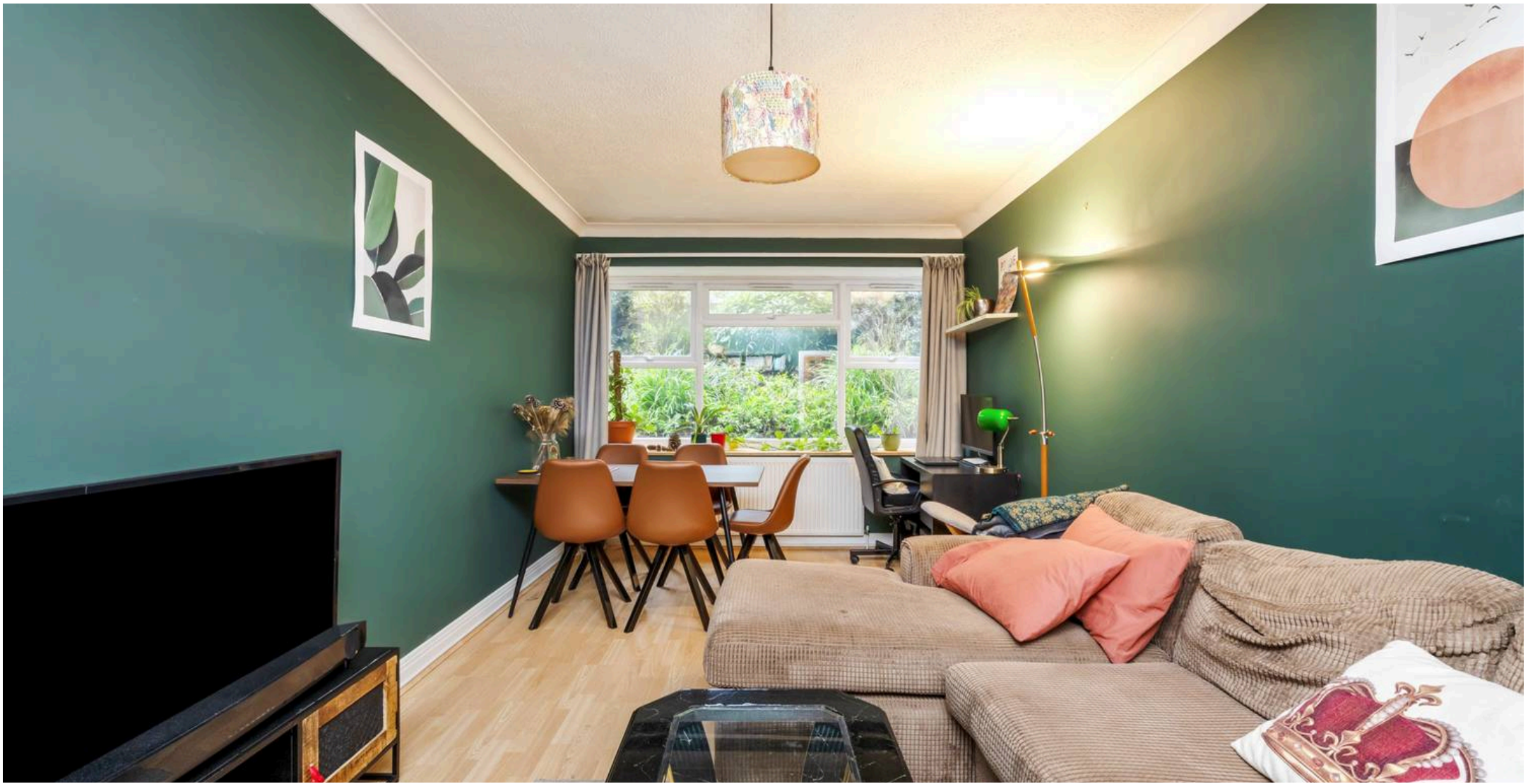




Flat 4, Palmeira House, 46 Palmeira Avenue
£280,000

**MANSELL
McTAGGART**
Trusted since 1947



Mansell McTaggart Hove

170 Church Road, Hove - BN3 2DJ

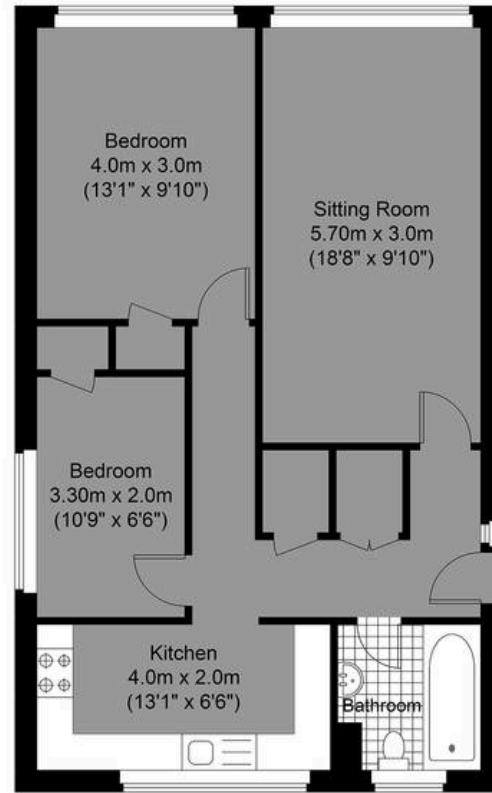
01273 044929

hove@mansellmctaggart.co.uk

www.mansellmctaggart.co.uk/branch/hove/



Approximate Gross Internal Area= 62.18 sq m / 669.29 sq ft



**MANSELL
McTAGGART**
— Trusted since 1947 —



Palmeira Avenue

Lower Ground Floor
Approximate Floor Area
669.29 sq ft (62.18 sq m)

Illustration for identification purposed only, measurements are approximate, not to scale.

© Mansell McTaggart

Flat 4

Palmeira House, Hove

Situated in the vibrant community of Hove along the sought-after Palmeria Avenue, this charming two apartment with no onward chain is perfect for a purchaser looking to embark on their next venture.

Council Tax band: C

Tenure: Leasehold

- Stunning Two Bedroom Apartment Situated Within The Heart Of Hove
- Magnificent Fitted Kitchen With An Array Of Integrated Appliances
- One Of Hove's Most Desirable Roads
- Charming Family Bathroom
- Within Close Proximity To Hove Seafront, Hove Train Station And An Abundance Of Local Amenities
- Light & Airy West Facing Lounge/Dining room

