



8 Windsor Court Hoxton Close, Ashford

Offers Over £110,000

8 Windsor Court Hoxton Close

Ashford, Ashford

A superb 1 double bedroom ground floor apartment set in a well maintained block for the over 55's. There is a visiting site manager and 24 hour emergency call system.

Council Tax band: B

Tenure: Leasehold

- One Bedroom Ground Floor Apartment
- Over 55's only
- Lift to all floors
- Visiting Site Manager
- 24 Hour Emergency Call System
- Communal Social Areas
- Communal Garden



LEASE INFORMATION

We are informed by the sellers of the following lease and service charge information: Lease: 108 years remaining
Service Charge: £2,587 per annum Ground Rent: £345 per annum We are informed that the ground rent and service charge is reviewed on a yearly basis.



COMMUNAL GARDEN

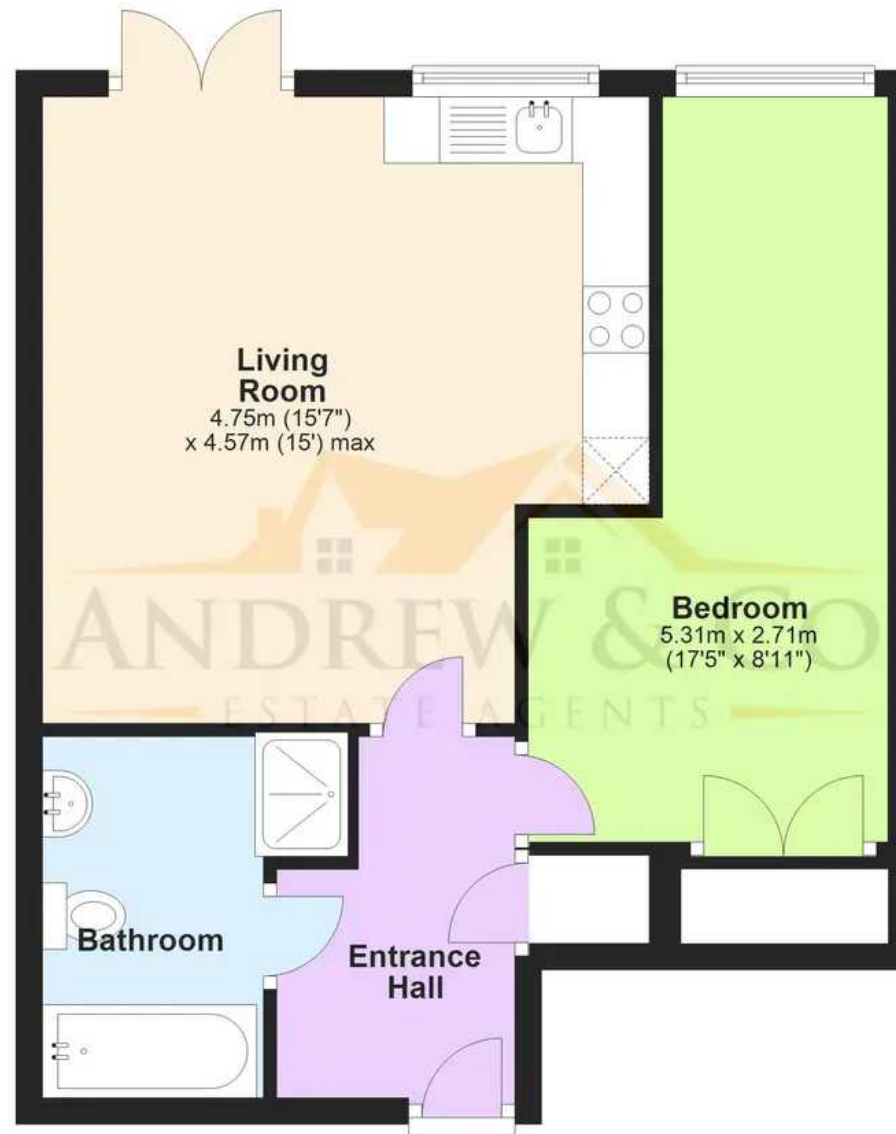






Ground Floor

Approx. 43.4 sq. metres (467.6 sq. feet)



Total area: approx. 43.4 sq. metres (467.6 sq. feet)

Plans are for layout purposes only and not drawn to scale, with any doors, windows and other internal features merely intended as a guide. NB: The garage is included within the total square footage.

Plan produced using PlanUp.

These particulars are intended to give a fair and reliable description of the property but no responsibility for any inaccuracy or error can be accepted and do not constitute an offer or contract. We have not tested any services or appliances (including central heating if fitted) referred to in these particulars and purchasers are advised to satisfy themselves as to the working order and condition, if a property is unoccupied at any time there may be reconnection charges for any switched off/disconnected or drained services or appliances. All measurements are approximate.

Andrew & Co Estate Agents - Ashford

01233 632383

info@andrewandco.co.uk

