



Sunnyside 16 South View Avenue, Gawsworth

£925,000

Macclesfield

**GASCOIGNE
HALMAN**

THE AREA'S LEADING ESTATE AGENCY



Sunnyside 16 South View Avenue

Gawsworth, Macclesfield

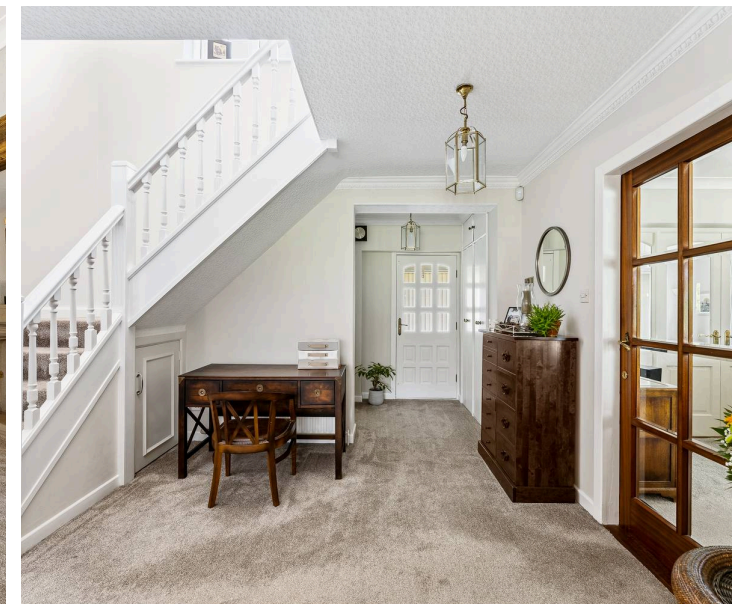
Council Tax band: G

Tenure: Freehold

EPC Energy Efficiency Rating:

EPC Environmental Impact Rating:

- A Spectacular Five Bedrooms Three Bathroom Substantial Detached Family Home
- Occupying Arguably The Best Position On The Road
- Property Sides On To Fabulous Countryside
- Large Family Accommodation With Three Reception Rooms And A Conservatory
- Impressive Open Plan Dining/Kitchen
- Garage For Four Cars And Good Amounts Of Off Road Parking
- Shared Ownership Of The Paddock On Left Hand Side Of The Road



Sunnyside 16 South View Avenue

Gawsworth, Macclesfield

Standing in arguably the best plot beautifully tucked away on this extremely sought after road in Gawsworth, this house offers large family accommodation, five bedrooms and three bathrooms, the gardens of this house are pretty amazing and siding on to open countryside to both the rear and the side. The property is approached via a lovely long driveway providing good amounts of parking and access to the four car garage. Within the purchase of this property you are also purchasing a share of the paddock on the left hand side of South View Drive, the property has been extended and now offers fabulous family accommodation to a room layout comprising of a lovely entrance hall with a galleried landing, lovely fitted cloakroom/WC, cloaks cupboard and stairs to the first floor, there is a beautiful main lounge with a large Inglenook fireplace housing a wood burning stove, double doors giving access through into the playroom/family room with French doors to the front and windows, also off the main lounge is the conservatory which takes full view of the fabulous garden and open countryside, the dining room is accessed via double doors off the hall, window to the rear. One of the lovely features of this house is the large open plan dining kitchen, which is fitted in a quality range of hand painted cream units with granite work surfaces, integrated appliances, large central island, dresser unit with oak tops, wooden floor throughout, ample room for a kitchen table and windows and doors onto the garden, off the kitchen is the side porch giving access to the garage and the utility room. The utility room has been extended with good amounts of storage, stainless steel sink unit and window to the rear.

Gawsworth is a much sought after picturesque village surrounded by open Cheshire countryside, with the centre of Macclesfield just a short drive





Sunnyside 16 South View Avenue

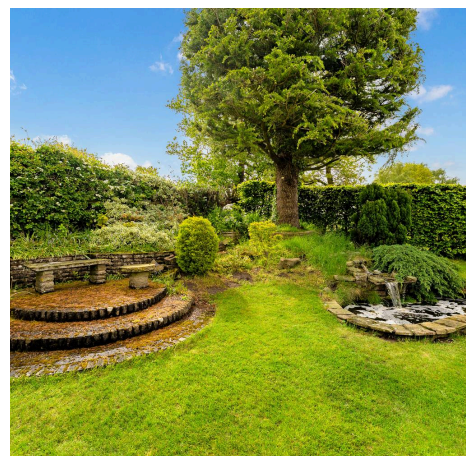
Gawsworth, Macclesfield

On the first floor is a fabulous galleried landing, window to the front aspect, airing cupboard housing the pressurised hot water cylinder, loft access with a pull down ladder and being part boarded, in total there are five bedrooms, the master being a lovely proportioned room and enjoying views to both the front and rear, there are a couple of steps down into the en suite bathroom with Jacuzzi bath and fully tiled walls, the further four bedrooms are all well proportioned and are served with both the main family bathroom including a bath and a shower, there is also a second shower room all being beautifully fitted.

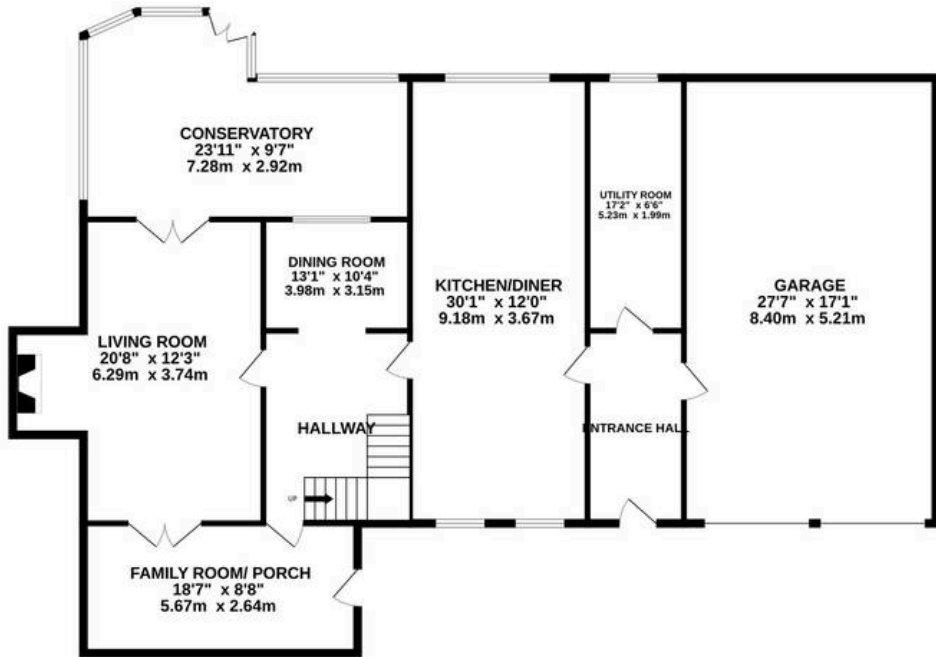
Garage is largely extended, capable of holding four cars, electrically operated up and over door.

Outside as mentioned, this house stands in fabulous gardens, beautifully tucked away with amazing views.

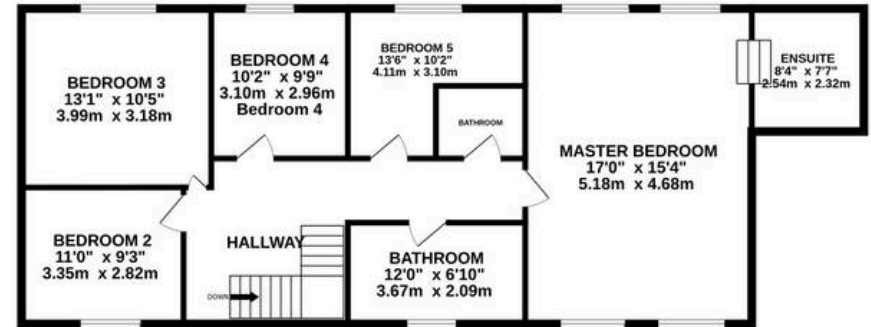
Gawsworth is a much sought after picturesque village surrounded by open Cheshire countryside, with the centre of Macclesfield just a short drive away. Macclesfield is a thriving market town that provides a comprehensive range of shops, varied social and recreational amenities and good schools for children of all ages. For the commuter, Manchester International Airport and its connection with the North West motorway network are approximately thirty minutes away by car and the railway station in Macclesfield provides fast and frequent Intercity and commuter links with Manchester, London and the surrounding business centres.



GROUND FLOOR
1982 sq.ft. (184.1 sq.m.) approx.



1ST FLOOR
1123 sq.ft. (104.4 sq.m.) approx.



TOTAL FLOOR AREA : 3105 sq.ft. (288.5 sq.m.) approx.

Measurements are approximate. Not to scale. Illustrative purposes only
Made with Metropix ©2026

You can include any text here. The text can be modified upon generating your brochure.



THE AREA'S LEADING ESTATE AGENCY