



Kinver House, Elthorne Road – N19 4AS
£2,000 pcm

**DAVID
ANDREW**

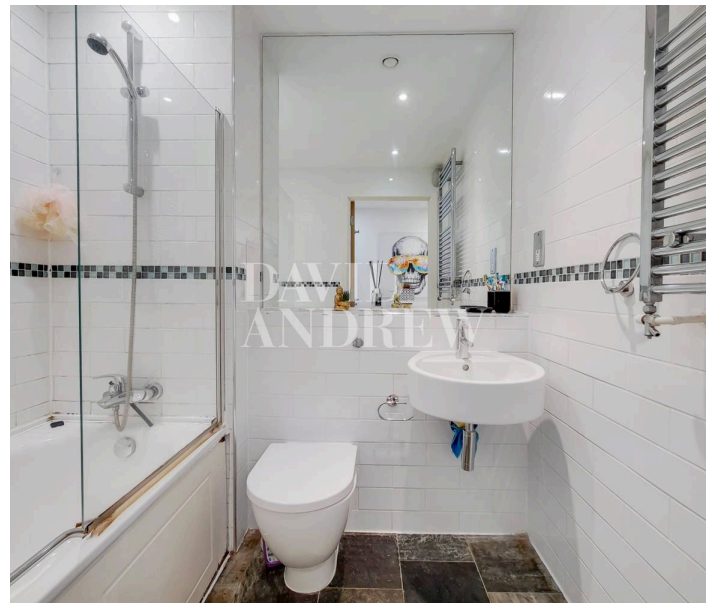
your
most
valuable
asset

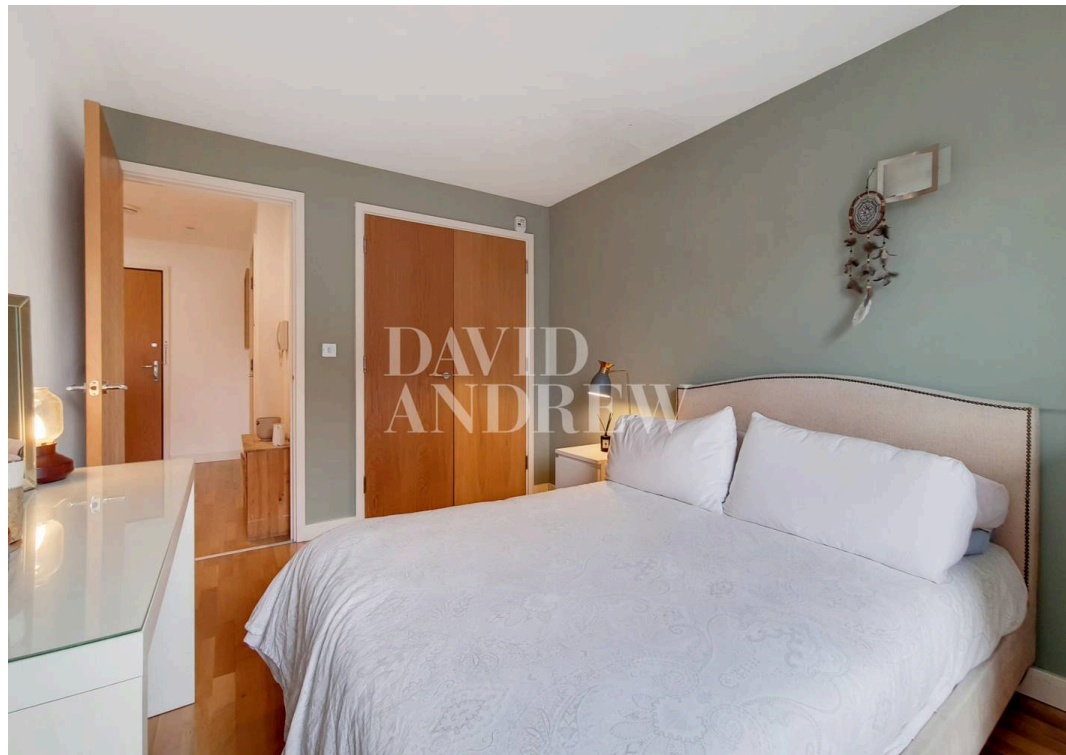
Positioned within a well-regarded new build development, this charming one-bedroom apartment presents an excellent opportunity for contemporary urban living. Thoughtfully laid out and well-maintained, the property offers a comfortable and practical living space, making it an ideal choice for professionals or individuals seeking a peaceful yet well-connected home in North London. Due to cladding works in the exterior of the building a 10% deduction on the rent will be provided during the works. Works are due to be completed in July 25.

The apartment features a spacious double bedroom and benefits from a bright, airy atmosphere throughout. The open-plan living area flows seamlessly onto a private balcony, providing a perfect spot for relaxation. Residents also enjoy the convenience of lift access and secure bike storage. The modern finish and clean, neutral décor make it move-in ready while offering flexibility for personal touches.

Located just a short walk from Archway Station (Northern Line), the property allows for quick and easy access to central London. The surrounding area offers a lively and diverse mix of independent cafes, restaurants, and local shops. Offered Furnished. Available 20th of June.

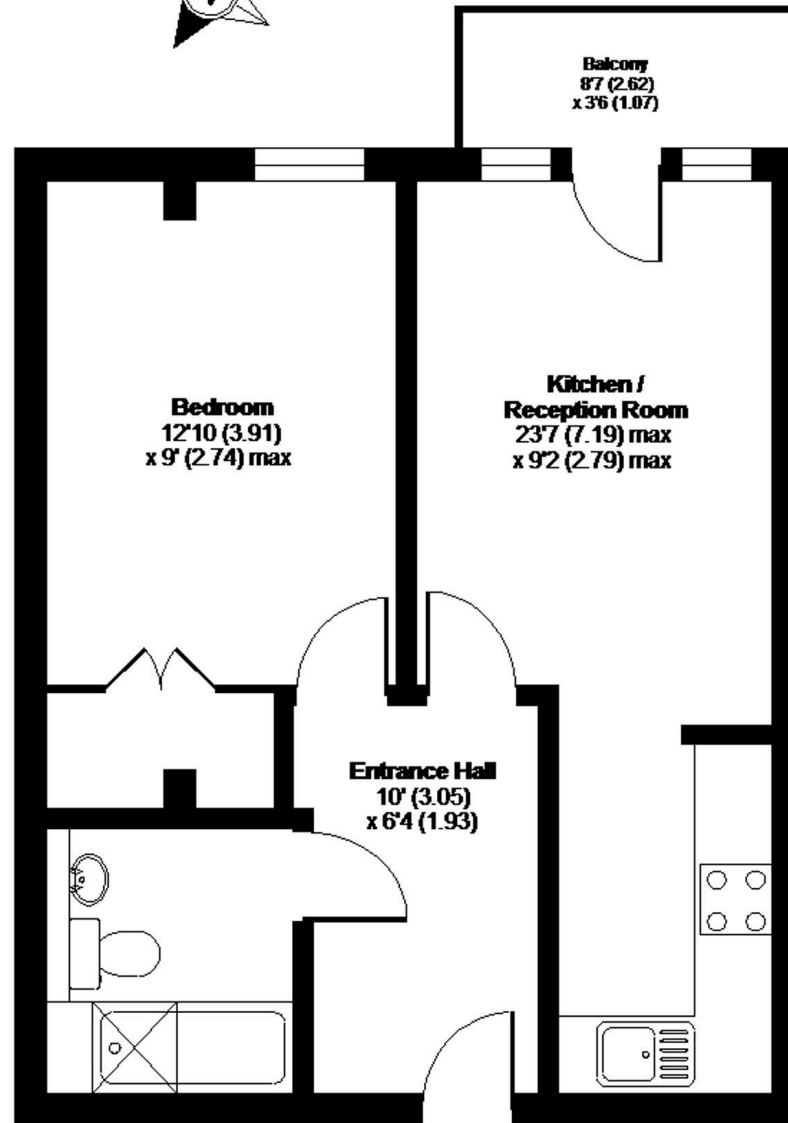
- One Bedroom Flat
- Private Balcony
- Comprising 437 sq ft / 40.5 sq mt
- Modern Finish Throughout
- Fully Fitted Kitchen
- Wooden Flooring Throughout
- Double Glazed Windows
- Walking Distance to Upper Holloway and Archway Stations
- Offered Furnished
- Available 24th of July





Elthorne Road, London, N19

APPROX. GROSS INTERNAL FLOOR AREA 437 SQ FT 40.5 SQ METRES



GROUND FLOOR

Whilst every attempt has been made to ensure the accuracy of the floor plan contained here, measurements of doors, windows and rooms are approximate and no responsibility is taken for any error, omission or misstatement. These plans are for representation purposes only as defined by RICS Code of Measuring Practice and should be used as such by any prospective purchaser. Specifically no guarantee is given on the total square footage of the property if quoted on this plan. Any figure given is for initial guidance only and should not be relied on as a basis of valuation.

Copyright nichecom.co.uk 2016 Produced for David Andrew REF : 97632

DAVID ANDREW | your most valuable asset

Archway Office

671 Holloway Road
London, N19 5SE

T (0)20 7619 3750

Highbury Office

90 Highbury Park
London, N5 2XE

T (0)20 7354 9111

Finsbury Park Office

167 Stroud Green Road
London, N4 3PZ

T (0)20 7281 2000

Property Management Office

235 Blackstock Road
London, N5 2LL

T (0)20 7354 9222

scan to book
a viewing



Note:
No liability has been exercised in the preparation of these particulars, and the accuracy of the information contained therein is not guaranteed. These particulars are for representation purposes only and should not be relied upon as a basis of valuation. Prospective applicants should take and rely upon their own advice and those of professional advisers. David Andrew Estates accept no liability for any error contained in these particulars.



safeagent