



Shepherds Mead Horsted Lane, Isfield TN22 5TX
Uckfield

£1,500,000

**MANSELL
McTAGGART**
— Trusted since 1947 —

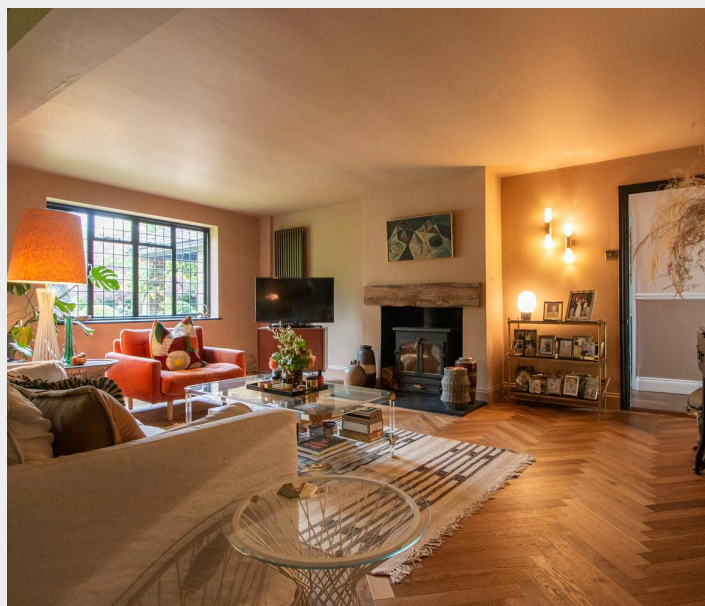
Shepherds Mead Horsted Lane

Isfield, Uckfield

A quietly beautiful 1950's five bedroom, four bathroom detached country home set within stunning grounds extending to approximately 0.7 of an acre adjoining a pleasant open paddock to the rear with a substantial detached garage. Situated in a highly sought after village within easy walking distance of the Lavender steam railway, farm shop, and traditional country Inn.

The accommodation comprises in brief on the ground floor; an entrance porch, a deep entrance hallway with a shower room and a utility room found nearby. To the front of the property is a formal dining room which is currently serving as a home office. There is a spacious drawing room, defined as a sitting room with wood burning stove and a reading area. Double doors continue through to a family room. The kitchen/breakfast room is a distinguishing part of the home made by a matching range of units with stone worksurfaces, a breakfast bar, breakfast area and family room returning to the hallway. And finally, a boot room.

Council Tax band: G



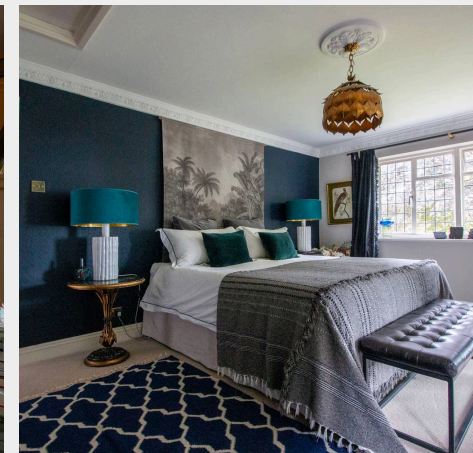
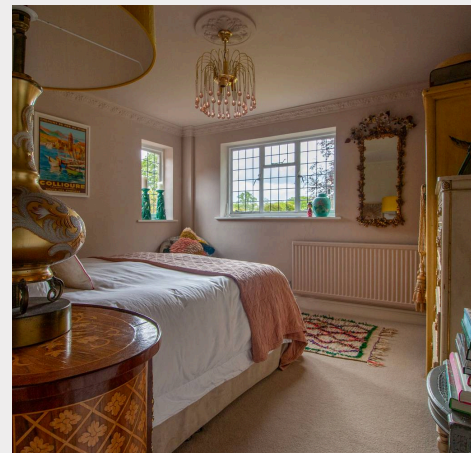


Shepherds Mead Horsted Lane

Isfield, Uckfield

From the hallway, a staircase rises to the first floor galleried landing which offers a generous principal bedroom suite complete with dressing room and a beautifully appointed en-suite bathroom featuring a double ended bath and separate shower cubicle, together with four further double bedrooms and two well-equipped family bathrooms.

Outside, the property is approached via electronically operated gates leading to a tree lined gravel driveway which provides extensive parking and in turn leads to the detached garage with adjoining workshop/storeroom. The mature gardens and grounds surround the house beautifully and include expansive level lawns, established flower and shrub borders, and flagstone seating terraces. Enclosed by natural hedging and complemented by mature copper birch and oak trees, the grounds provide a wonderful sense of seclusion while enjoying delightful views towards the neighbouring paddock and surrounding countryside.



Shepherds Mead, Horsted Lane, Isfield, East Sussex



Ground Floor
Approximate Floor Area
1618.35 sq ft
(150.35 sq m)



First Floor
Approximate Floor Area
1374.01 sq ft
(127.65 sq m)



Garage / Workshop
Approximate Floor Area
523.12 sq ft
(48.60 sq m)

Approximate Gross Internal Area (Excluding Garage / Workshop) = 278 sq m / 2992.36 sq ft
Illustration for identification purposes only, measurements are approximate, not to scale.



Mansell McTaggart Uckfield

Mansell McTaggart, 204-206 High Street - TN22 1RD

01825 760770

uf@mansellmctaggart.co.uk

www.mansellmctaggart.co.uk/branch/uckfield

Consumer Protection from Unfair Trading Regulations 2008 We have not tested any apparatus, equipment, fixtures, fittings or services and so cannot verify that they are in working order or fit for purpose. You are advised to obtain verification from your solicitor or surveyor. References to the tenure of a property are based on information supplied by the seller. We have not had sight of the title documents and a buyer is advised to obtain verification from their solicitor. Items shown in photographs are not included unless specifically mentioned within the sales particulars, but may be available by separate negotiation.