



Timberley Eastbourne Road, Halland BN8 6PU

Lewes

£550,000

**MANSELL
McTAGGART**

Trusted since 1947

Timberley Eastbourne Road

Halland, Lewes

A deceptively spacious four bedroom two bathroom detached modern family home set behind a large driveway with an integral double garden and pleasant rear garden

Timberley is a great family home with many individual features and boasts a great sense of space and light throughout. The driveway offers parking for a number of vehicles, and the rear garden is a wonderful size for entertaining.

The property is entered via an entrance lobby which continues through to a reception hallway with a cloakroom and study found nearby. There is a generous sitting room with wood burning stove and sliding doors opening to a conservatory. The kitchen fitted with a matching range of units to eye and base level, a utility room is found to one side and finally there is a dining room.

Council Tax band: G

- A deceptively spacious four bedroom two bathroom modern home with a large driveway, integral double garage and generous rear garden
- Impressive reception hall and galleried landing
- Sitting room with wood burning stove





Timberley Eastbourne Road

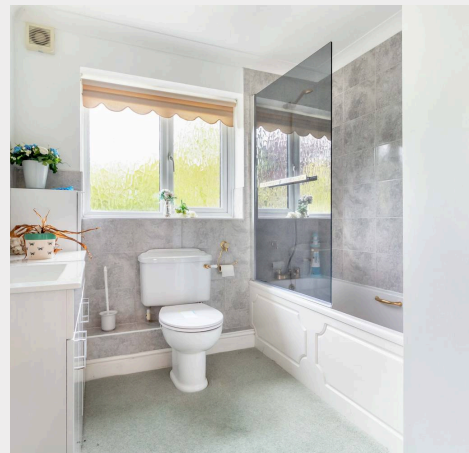
Halland, Lewes

The first floor provides a galleried landing, a principal bedroom having an en-suite shower room, three further double bedrooms and a family bathroom.

Outside, the front of the property is approached via a brick paved driveway which in turn leads to the integral double garage.

The village itself offers a public house as well as the popular Halland Forge Hotel. A nearby bus route offers convenient access to nearby Uckfield Town centre which offers a more comprehensive range of shopping and leisure facilities including a public cinema and library, a leisure centre, numerous bars/restaurants, supermarkets as well as a railway station offering services to London (London Bridge approximately 1hr 06mins)

- Dining room | Kitchen | Conservatory | Utility room | Cloakroom
- Principal bedroom with en-suite shower room
- Family bathroom



Timberley



Ground Floor
Approximate Floor Area
1115.14 sq ft
(103.60 sq m)

First Floor
Approximate Floor Area
691.04 sq ft
(64.20 sq m)

Approximate Gross Internal Area (Including Garage) = 167.80 sq m / 1806.18 sq ft
Illustration for identification purposes only, measurements are approximate, not to scale.

Mansell McTaggart Uckfield

Mansell McTaggart, 204-206 High Street - TN22 1RD

01825 760770

uf@mansellmctaggart.co.uk

www.mansellmctaggart.co.uk/branch/uckfield

Consumer Protection from Unfair Trading Regulations 2008 We have not tested any apparatus, equipment, fixtures, fittings or services and so cannot verify that they are in working order or fit for purpose. You are advised to obtain verification from your solicitor or surveyor. References to the tenure of a property are based on information supplied by the seller. We have not had sight of the title documents and a buyer is advised to obtain verification from their solicitor. Items shown in photographs are not included unless specifically mentioned within the sales particulars, but may be available by separate negotiation.