

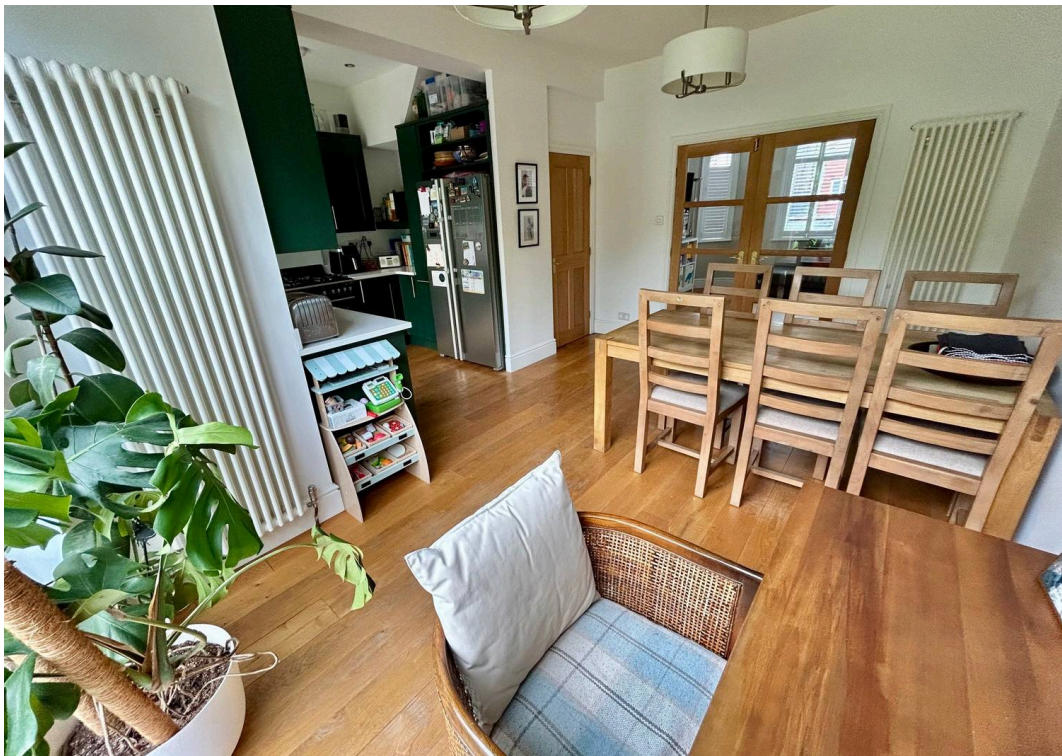


18 Baldock Road, Didsbury
Manchester

£550,000

**GASCOIGNE
HALMAN**

THE AREA'S LEADING ESTATE AGENCY



18 Baldock Road

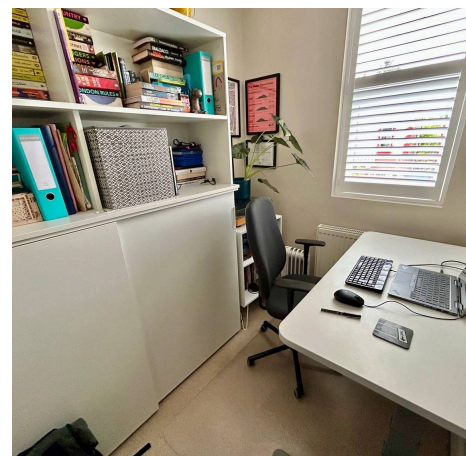
Didsbury, Manchester

Council Tax band: C

Tenure: Freehold

- A Stunning and Immaculately Presented Three Bedroom Semi Detached Property
- Renovated and Refurbished Throughout by the Current Owners
- Bay Fronted Living Room and Modern Open Plan Dining Kitchen
- Three Bedrooms and a Stylish Three Piece Bathroom Suite
- Off Road Parking for Two Vehicles
- Large Private Garden with Lawned and Flagged Area
- Located Only Moments from Didsbury Village and Excellent Transport Links

Didsbury Village is a vibrant hub, offering a wide range of restaurants, bars and shops. Manchester City Centre is approx. five miles away and is readily accessible via frequent bus services along Kingsway (A34) or Wilmslow Road (A5145). The Trafford Shopping centre is a 15 minute drive away, Manchester Airport is approx. 12 minutes away, and the property is well-placed for access to the national motorway and rail networks. Local schooling is excellent. Didsbury has several primary schools including Beaver Rd Primary School (Ofsted rated Outstanding) St Cath's and CofE. The property is close to the bus routes to the City Centre Independent Schools and within the catchment area of Parrs Wood High School.



18 Baldock Road

Didsbury, Manchester

This stunning and immaculately presented three bedroom semi detached property offers an exceptional standard of accommodation, having been thoughtfully renovated and refurbished throughout by the current owners.

The welcoming entrance hall contains a useful downstairs W/C and leads to a beautifully appointed, bay fronted living room, filled with natural light and finished with elegant décor and quality flooring. To the rear, the property boasts a modern open plan dining kitchen, featuring a comprehensive range of contemporary units, integrated appliances with attractive French doors which overlook the rear garden.

Upstairs, there are three well proportioned bedrooms, each with a light and airy feel, complemented by a stylish three piece bathroom suite that has been finished to a high specification. Both the primary bedroom and bedroom two benefits from built in wardrobes.

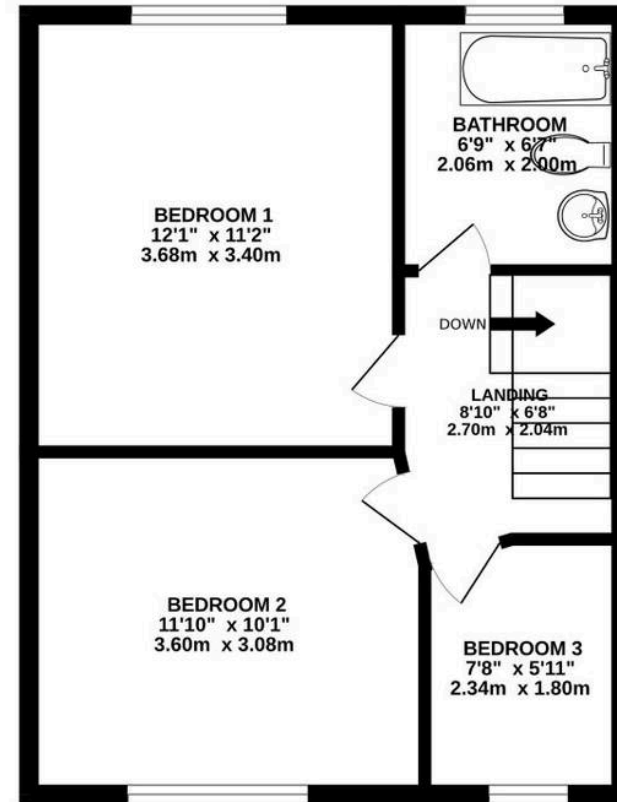
The property also provides unique off road parking for two vehicles to the front of the property. A secure gate provides access to the large and private rear garden. The garden offers a generous lawned and flagged areas. Located only moments from the heart of Didsbury Village, residents will enjoy immediate access to a wide array of local amenities, independent shops, cafes, and restaurants, as well as excellent transport links for easy commuting to Manchester city centre and beyond. Didsbury Park is within a 5 minute walk from the property.



GROUND FLOOR
500 sq.ft. (46.5 sq.m.) approx.



1ST FLOOR
418 sq.ft. (38.8 sq.m.) approx.





THE AREA'S LEADING ESTATE AGENCY