



Renshaw Drive, Gedling  
£1,050 pcm





## Renshaw Drive

Gedling, Nottingham

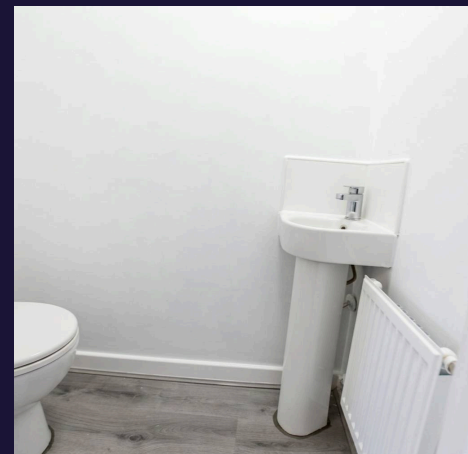
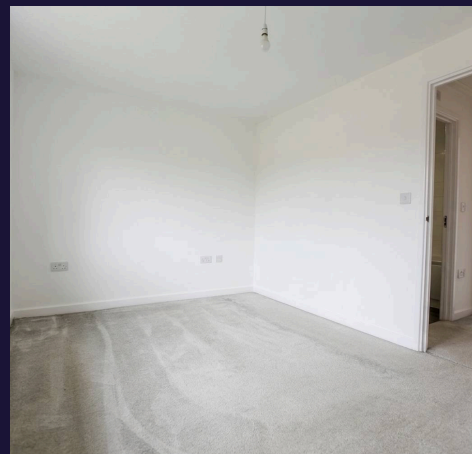
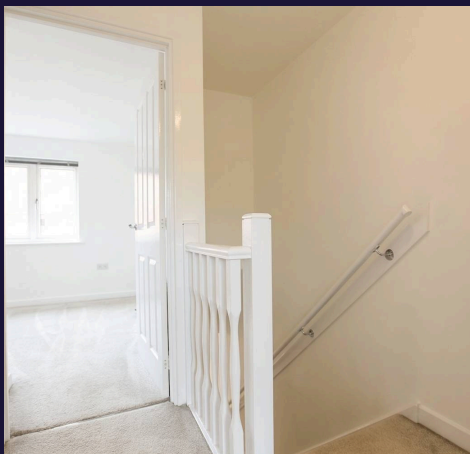
Comfort Estates are pleased to present this impressive two-bedroom unfurnished terraced house, offering an excellent blend of comfort, style and practicality, perfectly suited to modern living. Upon entering the property, you are welcomed by a bright and airy hallway with neutral décor, setting the tone for the rest of the home. The ground floor comprises a spacious modern kitchen, a convenient downstairs WC, and a generous living area with patio doors leading out to the private rear garden - ideal for relaxing or entertaining.

To the first floor are two well-proportioned double bedrooms, one of which benefits from a useful built-in storage cupboard, along with the main bathroom fitted with a contemporary three-piece suite, including a shower over the bath.

The property also benefits from off-road parking for two vehicles, conveniently located directly in front of the house - additional on street parking is also available if needed. Ideally situated within walking distance of the town centre, residents can enjoy a range of local amenities including shops, restaurants and bars, as well as direct bus links in and out of Nottingham City Centre.

Available now, this property is perfect for a professional couple or small family looking for a modern and peaceful home.

Comfort Estates are pleased to present this impressive two-bedroom unfurnished terraced house, offering an excellent blend of comfort, style and practicality, perfectly suited to modern





### **Kitchen**

9' 10" x 11' 5" (2.99m x 3.49m)

Spacious and modern kitchen fitted with a range of wall and base storage units, complemented by contrasting dark grey worktops, a white tiled splashback and grey laminate flooring. The kitchen is equipped with an integrated gas hob, oven and extractor fan. There is space for both a fridge/freezer and washing machine for tenants to install their own appliances.

### **Living Area**

12' 10" x 11' 9" (3.91m x 3.58m)

Bright and neutrally decorated living and dining area featuring French doors leading out into the garden, allowing plenty of natural light into the space. The room offers a versatile layout with ample space for sofas and a dining area, making it ideal for both relaxing and entertaining.

### **WC**

The ground floor benefits from a WC complete with corner wash basin, toilet and radiator.

### **Bedroom 1**

10' 9" x 8' 6" (3.28m x 2.60m)

At the top of the stairs is a spacious double bedroom overlooking the rear garden. Large windows allow plenty of natural light to fill the room, while fitted Venetian blinds provide privacy. Freshly painted in white and finished with light grey carpet, the room offers a bright and modern feel.

**Bedroom 2**

9' 11" x 8' 4" (3.01m x 2.53m)

A further spacious bedroom located at the front of the property, comfortably accommodating a double bed and additional furniture. The room also benefits from a handy built-in storage cupboard and is neutrally decorated with freshly painted white walls and light grey carpet.

**Bathroom**

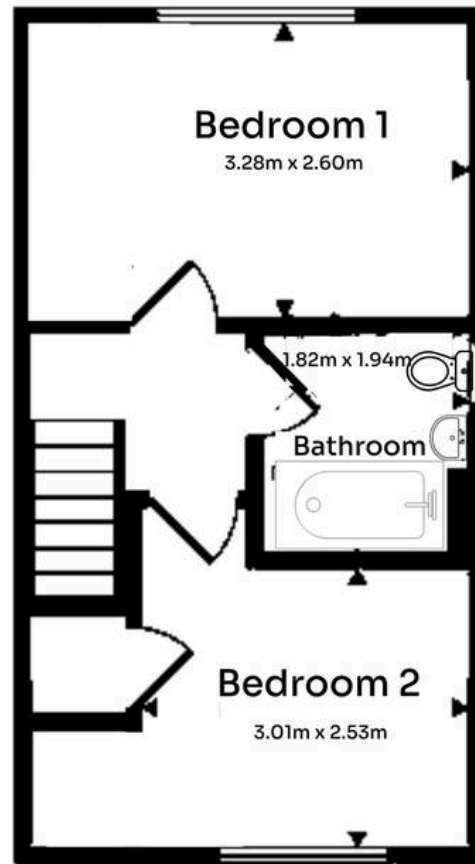
6' 4" x 6' 0" (1.94m x 1.82m)

The main bathroom is located on the first floor of the property and has been freshly painted in white throughout. The room features white tiling surrounding the bath and shower area, complemented by laminate flooring for a clean and modern finish. A matching three-piece suite includes a WC, wash basin and shower over the bath.

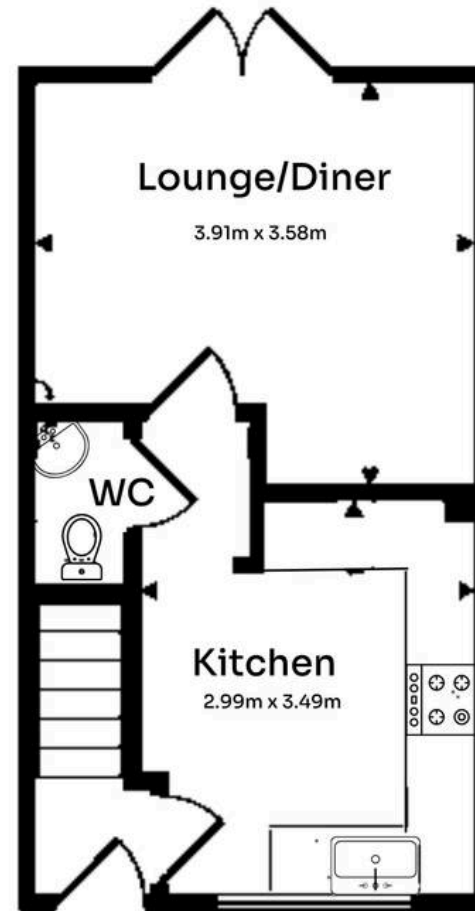




**Comfort**  
Estates



First Floor



Ground Floor



## Comfort Estates

Comfort Estates, 47 Derby Road - NG1 5AW

0115 933 8997 • [info@comfortestates.co.uk](mailto:info@comfortestates.co.uk) • [www.comfortestates.co.uk](http://www.comfortestates.co.uk)