



## 5 New Road, Midhurst, West Sussex, GU29 9PQ

Offers in the Region of £140,000





## 5 New Road, Midhurst, GU29 9PQ

Leasehold - 102yrs / Service Charge - £760 / Council Band - B

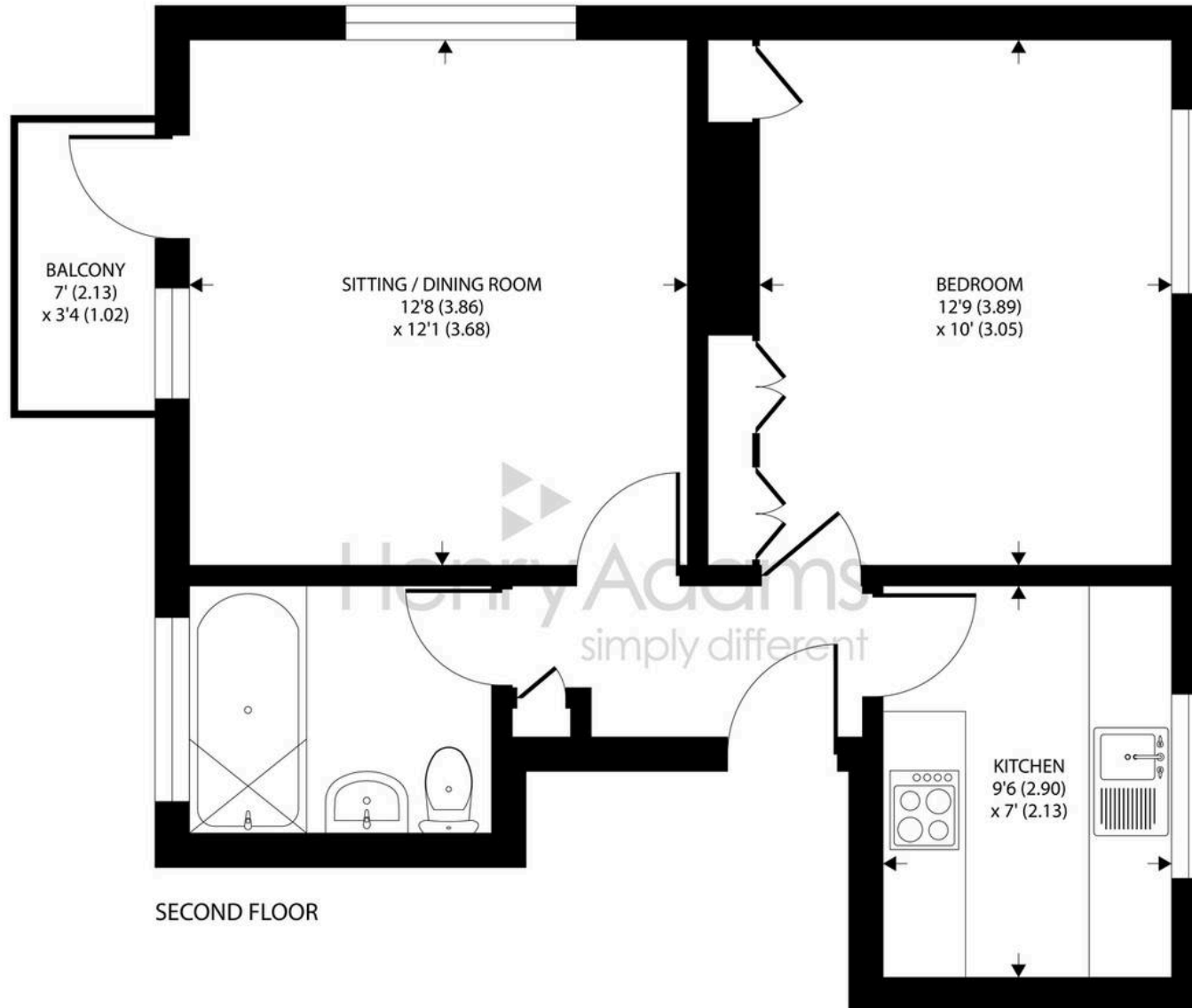
- Double Glazed
- Annual Service Charge - £760
- Balcony With Views Over Midhurst
- 103 Years Remaining on Lease
- Communal Gardens
- Annual Ground Rent: £10
- In Need of Partial Updating

A well-proportioned one-bedroom, purpose-built second floor apartment, pleasantly positioned on the outskirts of Midhurst and enjoying far-reaching views across the town. Occupying an elevated position within the building, the property benefits from a private balcony accessed directly from the generous sitting/dining room, an ideal space to relax and take in the outlook.

The accommodation comprises a spacious double bedroom with built-in storage, a fitted kitchen offering a good range of cupboards and work surfaces and a bathroom suite complete with bath and overhead shower. While the property has been well maintained, it would now benefit from a degree of modernisation, presenting an excellent opportunity for a purchaser to update and personalise the space to their own taste.

Externally, residents have use of well-kept communal gardens, and there is unallocated parking available on New Road. This property would make an ideal first-time purchase, investment opportunity with scope to add value through refurbishment.





SECOND FLOOR

## 5 New Road, Midhurst, GU29 9PQ

Approximate Area = 461 sq ft / 43 sq m

For identification only - Not to scale



Floor plan produced in accordance with RICS Property Measurement Standards incorporating International Property Measurement Standards (IPMS2 Residential). ©nichecom 2021. Produced for Henry Adams. REF: 782557



## Henry Adams – Midhurst

Henry Adams, Bepton Court, 2 West Street – GU29 9NF

01730 817370 • [midhurst@henryadams.co.uk](mailto:midhurst@henryadams.co.uk) • [www.henryadams.co.uk/](http://www.henryadams.co.uk/)

Agents Note – Our particulars are for guidance only and are intended to give a fair overall summary of the property. They do not form part of any contract or offer, and should not be relied upon as a statement or representation of fact. Measurements, areas and distances are approximate only. Photographs may include lifestyle shots and pictures of local views.